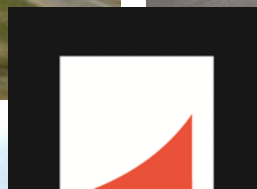


List of 2014 Federally Obligated Projects

for the Memphis Urban Area Metropolitan Planning Organization

[Lista de Proyectos Federales 2014 Obligados por la MPO Area Urbana Memphis]





Memphis MPO
METROPOLITAN PLANNING ORGANIZATION

Memphis Urban Area Metropolitan Planning Organization
Department of Regional Services
125 North Main Street, Suite 450
Memphis, TN 38103
901.576.7190 (phone)
901.576.7272 (fax)
www.memphismpo.org

This document is available in accessible formats when requested ten (10) calendar days in advance.
Este documento está disponible en formatos accesibles cuando se solicite con cinco días de antelación.

This document was prepared and published by the Memphis Urban Area Metropolitan Planning Organization (MPO) and is prepared in cooperation with and financial assistance from the following public entities: the Federal Transit Administration (FTA), the Federal Highway Administration (FHWA), the Tennessee Department of Transportation (TDOT), the Mississippi Department of Transportation (MDOT), as well as the City of Memphis, Shelby County, Tennessee and DeSoto County, Mississippi. This financial assistance notwithstanding, the contents of this document do not necessarily reflect the official view or policies of the funding agencies.

It is the policy of the Memphis Urban Area Metropolitan Planning Organization (MPO) not to discriminate on the basis of age, race, color, national origin or disability in its hiring or employment practices, or in its admission to or operations of its program, services, or activities. All inquiries for Title VI and/or the American Disabilities Act, contact Mitchell Lloyd, at 901-576-7146 or Mitchell.Lloyd@memphistn.gov.

TABLE OF CONTENTS

| | |
|---|-----------|
| I. MPO OVERVIEW | |
| A. ACRONYMS..... | 1 |
| B. THE MEMPHIS URBAN AREA METROPOLITAN PLANNING ORGANIZATION..... | 2 |
| II. ABOUT THIS REPORT | |
| A. FEDERAL GUIDANCE..... | 4 |
| B. TRANSPORTATION IMPROVEMENT PROGRAM..... | 5 |
| III. SUMMARY OF FY 2014 OBLIGATED PROJECTS | |
| A. BY PROJECT TYPE..... | 6 |
| B. BY FUNDING TYPE..... | 7 |
| IV. LIST OF 2014 FEDERALLY OBLIGATED PROJECTS..... | 9 |
| V. APPENDIX A (EXPLANATION OF FUNDING SOURCES)..... | 14 |

I. MPO OVERVIEW

A. ACRONYMS

| | |
|------------|---|
| ATAC | Active Transportation Advisory Committee |
| ETC | Engineering and Technical Committee |
| FAC | Freight Advisory Committee |
| FHWA | Federal Highway Administration |
| FTA | Federal Transit Administration |
| FY | Fiscal Year |
| IAC | Interagency Consultation Group |
| ITS | Intelligent Transportation Systems |
| MAP-21 | Moving Ahead for Progress in the 21st Century |
| MATA | Memphis Area Transit Authority |
| MDOT | Mississippi Department of Transportation |
| MPO | Metropolitan Planning Organization |
| PLAC | Planning and Land Use Committee |
| SAFETEA-LU | Safe Accountable Flexible Efficient Transportation Equity Act: A Legacy for Users |
| STIP | Statewide Transportation Improvement Program |
| TDOT | Tennessee Department of Transportation |
| MDOT | Mississippi Department of Transportation |
| TIP | Transportation Improvement Program |
| Title VI | Title VI of the U.S. Civil Rights Act of 1964, as amended |
| TPB | Transportation Policy Board |

FUNDING TYPES*

| | |
|------|--|
| BRR | Bridge Replacement and Rehabilitation |
| CMAQ | Congestion Mitigation & Air Quality |
| DEMO | Demonstration Funds |
| ENH | Transportation Enhancement Grant |
| ES | Economic Stimulus |
| HPP | High Priority Project |
| HSIP | Highway Safety Improvement Program |
| IM | Interstate Maintenance |
| NCPD | National Corridor Planning and Development Program |
| NHPP | National Highway Performance Program |
| NHS | National Highway System |
| SRTS | Safe Routes to Schools |
| STP | Surface Transportation Program |
| TAP | Transportation Alternatives Program |
| 5307 | FTA Urbanized Area Formula Program |
| 5337 | FTA State of Good Repair Program |

* For a more detailed description of these funding sources please see **Appendix A**.

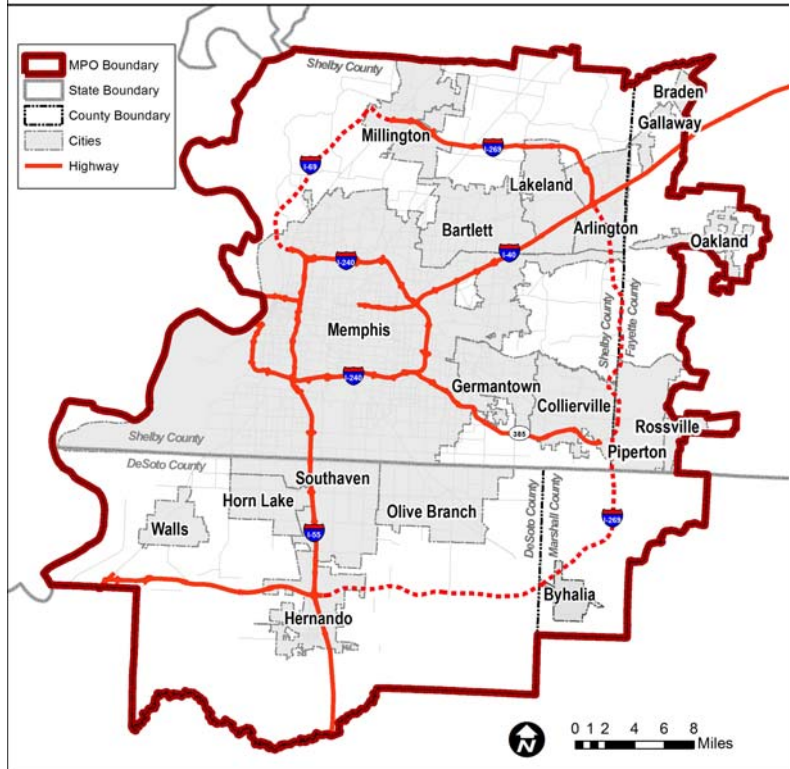
I. MPO OVERVIEW

B. THE MEMPHIS URBAN AREA METROPOLITAN PLANNING ORGANIZATION

The Memphis Urban Area Metropolitan Planning Organization (MPO) was created in 1977 and has the lead responsibility to ensure that the transportation planning process is being carried out in accordance with federal and state regulations. Federal regulations require that an MPO be designated to carry out a comprehensive, continuing and coordinated transportation planning process for urbanized areas (as defined by the U.S. Bureau of Census) with a population of 50,000 or more.

As a result of the recently completed boundary expansion study, the Memphis MPO expanded its boundary and is now comprised of eighteen cities or towns and four counties as illustrated in **Figure I**. The MPO boundary includes all of Shelby County and a portion of western Fayette County in Tennessee. The boundary also includes all of DeSoto County and a portion of western Marshall County in Mississippi.

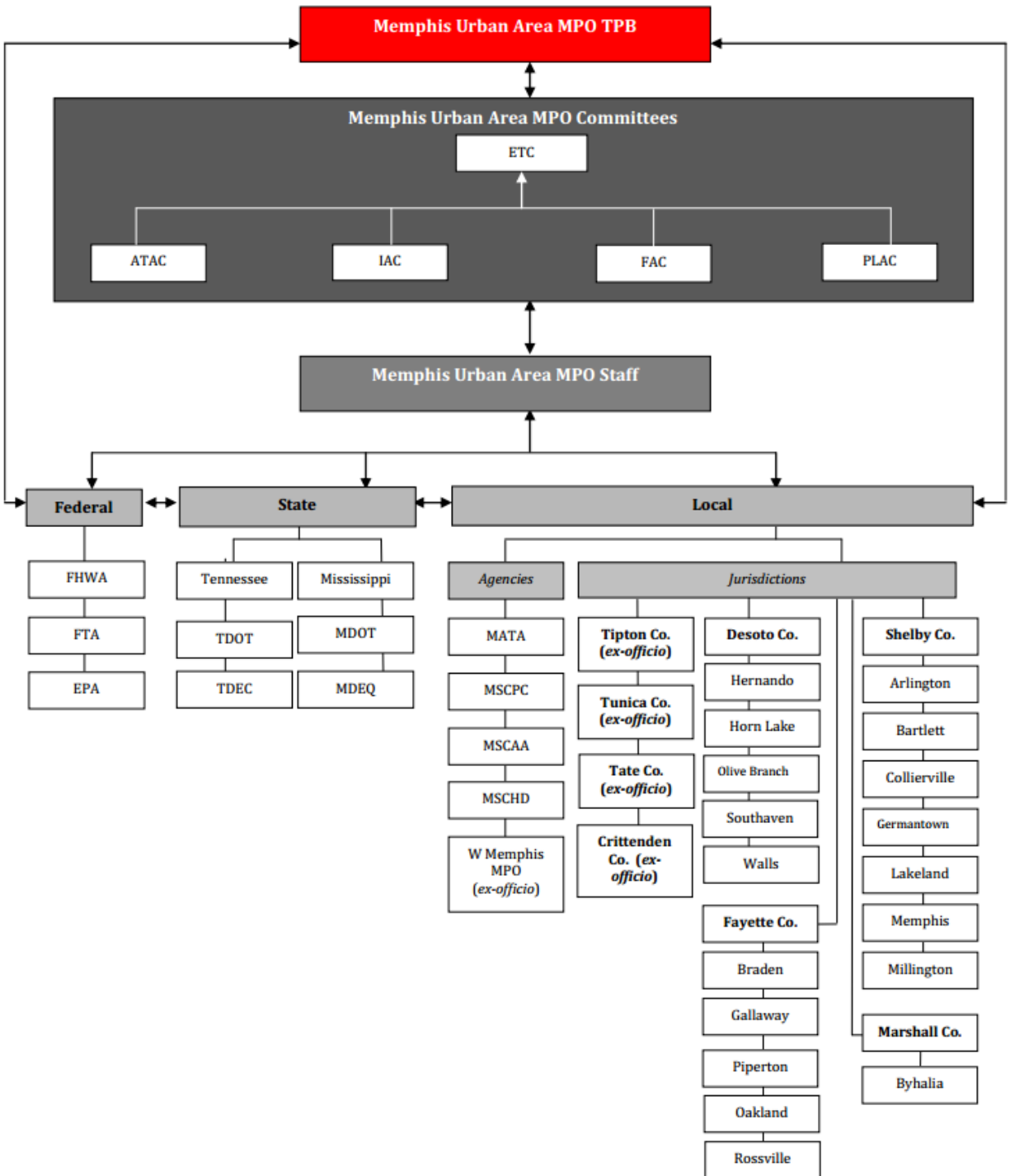
Figure I: Memphis MPO Boundary



The Memphis and Shelby County Department of Regional (DRS) serves as staff for the Memphis MPO under the direction of the MPO's Transportation Policy Board (TPB). The Memphis MPO also has five advisory committees including, Engineering and Technical Committee (ETC), Active Transportation Advisory Committee (ATAC), Interagency Consultation Committee (IAC), Freight Advisory Committee (FAC), and the Planning and Land Use Committee (PLAC). The following **Figure II**, is an organizational chart that shows the role of the different federal, state, regional and local agencies in the Memphis MPO's planning process.

I. MPO OVERVIEW

Figure II: THE MEMPHIS URBAN AREA METROPOLITAN PLANNING ORGANIZATIONAL CHART



II. ABOUT THIS REPORT

A. FEDERAL GUIDANCE

As the designated metropolitan planning organization for the region, the MPO is required by Federal law to prepare a Transportation Improvement Program (TIP) to indicate how the Long Range Transportation Plan (LRTP) will be implemented. Preparation of the TIP is required by federal legislation known as Moving Ahead for Progress in the 21st Century (MAP-21) and by the Metropolitan Planning Regulations (23CFR 450.324) of the United States Department of Transportation (USDOT). The MPO's current TIP covers the Fiscal Years 2014-17, from October 1, 2013, to September 30, 2017 and provides a prioritized list of multimodal transportation projects within the Memphis MPO area.

As with the previous transportation bill, Safe, Accountable, Flexible, Efficient, Transportation Equity Act: A Legacy for Users (SAFETEA-LU), the current transportation bill, MAP-21, requires the MPOs to publish an annual listing of projects for which funds have been obligated in the preceding year as a record of project delivery and a progress report for public information and disclosure. In addressing MAP-21 requirements, this report lists all transportation projects in the Memphis Area MPO's region that were obligated during Fiscal Year 2014 (October 1, 2013 - September 30, 2014).

The Federal Highway Administration (FHWA) defines obligation as the Federal government's legal commitment to pay or reimburse the States or other entities for the Federal share of a project's eligible costs.¹ An obligated project is one that has been authorized by the federal government and funds have been obligated or approved for reimbursement. For Federal Transit Administration (FTA) projects, obligation occurs when the FTA grant is awarded. For FHWA projects, an obligation takes place when a project agreement is executed and the State/grantee requests that the funds be obligated.

The projects listed in this report have been developed in accordance with FTA/FHWA preliminary guidance. The guidance establishes a framework for developing the information in a user friendly and accessible format. It is the primary responsibility of the MPO to prepare the list, and it is the MPO's Transportation Improvement Program (TIP) that serves as a basis for the information. However, the MPO's TIP identifies projects within the fiscal year that project implementation is anticipated rather than when the project received Federal authorization. Therefore, the obligated list of projects must be developed through a cooperative effort with state and public transportation operators responsible for tracking project authorizations and obligations.

1 Title 23 U.S.C. 134(j)(7)(B), 23 U.S.C. 135(g)(4)(B), 49 U.S.C. 5303(j)(7)(B), and 49 U.S.C. 5304(g)(B) FTA/FHWA Preliminary Guidance on Annual Listing of Obligated Projects – March, 2006

II. ABOUT THIS REPORT

B. TRANSPORTATION IMPROVEMENT PROGRAM

The Transportation Improvement Program (TIP) lists transportation projects over a four year period that will be funded, at least in part, with funds from the FHWA and/or the FTA. The TIP is the mechanism by which projects in the 2040 Long Range Transportation Plan (LRTP) are built. The TIP provides the opportunity to select projects to implement the transportation planning goals expressed in the MPO's adopted LRTP. In order for a project to be included in the TIP, it must be in one of the fiscally constrained LRTP project lists. The FY 2014-2017 TIP served as a 4-year financially feasible program of transportation improvements.

TIP projects are consistent with federal transportation regulations and accordingly, all TIP projects become part of TDOT's and MDOT's State Transportation Improvement program (STIP). These projects are financially constrained and implementable for each year. The MPO's Transportation Policy Board (TPB) adopted the current FY 2014-17 TIP on September 12, 2013. The TIP is amended/adjusted periodically to add new projects, delete projects, change funding amounts and fiscal years etc. A Memorandum of Agreement between the Memphis MPO and the Tennessee Department of Transportation (TDOT) and the Mississippi Department of Transportation (MDOT) describes the procedures used by the Memphis MPO to process these amendments and adjustments to meet the federal requirements.

The content of the annual listing of projects is consistent with the projects listed in the MPO's TIP. This includes project name and identification numbers, project location, project description, as well as the amount of funds programmed in the TIP. Fund obligations are a measure of the progress being made on a project. As such, the Annual List of Obligated Projects is prepared at the end of the federal fiscal year to identify which projects obligated funding during the fiscal year.

Projects for which funds have been obligated are not necessarily initiated or completed in the program year, and the amount of the obligation will not necessarily equal the total cost of the project. It is possible that obligated funds exceed the amount estimated in the TIP. It is also possible that unused funds may be credited back when not needed at the completion of a project phase resulting in a deobligation.

III. SUMMARY OF 2014 OBLIGATED PROJECTS

A. BY PROJECT TYPE

The MPO tracks the obligated funds for transportation projects within the Memphis MPO area. **Table I** shows the **total obligation for FY 2014 was \$110,752,130.42**, with \$78,953,779.43 in Tennessee projects, \$16,519,536.00 in Mississippi projects, and \$15,278,815.00 in transit projects. The obligated funds have decreased from FY 2013 when with the total obligation was \$214,890,490.52, with \$161,585,629.13 in Tennessee projects, \$31,752,754.39 in Mississippi projects, and \$21,552,107.00 in transit projects.

Table I: Federal Funding Obligations for All Projects for FY 2013 & 2014

| Federally Obligated Projects: FY 2013 & 2014 Comparison | | |
|---|-------------------------|-------------------------|
| Fiscal Year | 2013 | 2014 |
| Tennessee Projects | \$161,585,629.13 | \$78,953,779.43 |
| Mississippi Projects | \$31,752,754.39 | \$16,519,536.00 |
| Transit Projects | \$21,552,107.00 | \$15,278,815.00 |
| Total Obligation: | \$214,890,490.52 | \$110,752,130.43 |

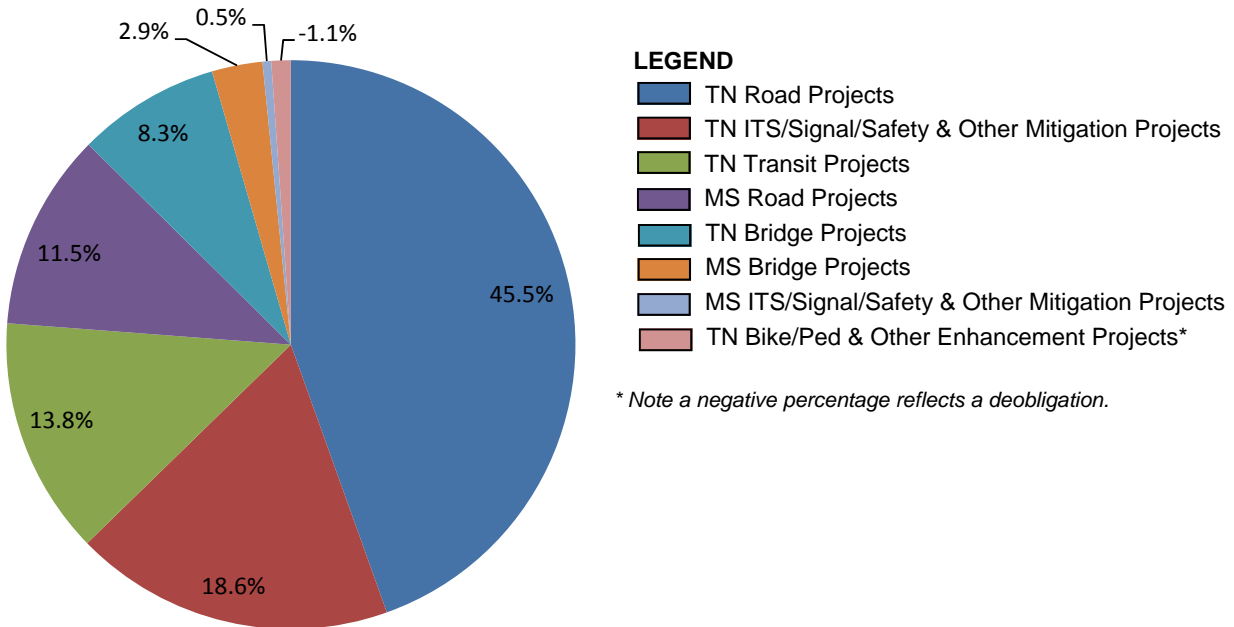
Figure III on the following page and **Table II** below show the breakdown in funding by project type. Roadway projects received the bulk of federal transportation monies in 2014, totaling \$63,119,039.50 or 57% with \$50,422,301.50 in Tennessee and \$12,696,738.00 in Mississippi. Roadway projects were followed by Intelligent Transportation Systems (ITS), signalization, and other safety projects totaling \$21,145,512.40 or 19.1% with \$20,588,318.40 in Tennessee and \$557,194.00 in Mississippi. The next highest category for obligated funds in FY 2014 was transit projects which totaled \$15,278,815.00 or 13.8%. Bridge projects in Tennessee received a total obligation of \$9,190,659.86 or 8.3% while Bridge projects in Mississippi received a total obligation of \$3,265,604.00 or 2.9%. Tennessee bike and pedestrian and enhancement projects had a deobligation in funds for a total of \$1,247,500.33. Note: Two deobligations included as enhancement projects in this category were for the I-55 Welcome Center Building for a total of \$1,824,570. A complete list of all of the projects which received obligation and deobligation for FY 2014 are shown in **Table IV** of this document.

Table II: FY 2014 Obligation Amounts by Project Type for the Memphis MPO:

| | | |
|--|-------------------------|--------------|
| Tennessee Road Projects: | \$50,422,301.50 | 45.5% |
| Tennessee ITS/Signal/Safety and Other Mitigation Projects: | \$20,588,318.40 | 18.6% |
| Tennessee Transit Projects | \$15,278,815.00 | 13.8% |
| Mississippi Road Projects: | \$12,696,738.00 | 11.5% |
| Tennessee Bridge Projects: | \$9,190,659.86 | 8.3% |
| Mississippi Bridge Projects: | \$3,265,604.00 | 2.9% |
| Mississippi ITS/Signal/Safety and Other Mitigation Projects: | \$557,194.00 | 0.5% |
| Tennessee Bike/Ped and Other Enhancement Projects: | -\$1,247,500.33 | -1.1% |
| Total Obligation: | \$110,752,130.43 | 100% |

III. SUMMARY OF 2014 OBLIGATED PROJECTS

Figure III: FY 2014 Obligation Percentages by Project Type for the Memphis MPO



* Note a negative percentage reflects a deobligation.

B. BY FUNDING TYPE

Table III and Figure IV on the following page show the breakdown of the funding by the source of the federal funds. National Highway Performance Program (NHPP) funds received the largest allotment of \$46,317,441.75 or 41.8% of the obligated funds for the Memphis MPO area. The second largest funding source was Surface Transportation Program (STP) funds totaling \$29,568,825.47 or 26.7% of the obligated funds for the area. Congestion Mitigation and Air Quality Funds had a total obligation of \$17,401,932.23 or 15.7% and 5307 Federal Transit Authority (FTA) Urbanized Area Formula Program had a total obligation of \$11,722,696.00 or 10.6% accounting for the third and fourth largest funding sources in the Memphis MPO area.

The following eight funding sources including the Highway Safety Improvement Program (HSIP), Interstate Maintenance (IM), High Priority Project (HPP), 5337 Federal Transit Authority State of Good Repair Grant, Bridge Replacement and Rehabilitation (BRR), Transportation Alternatives Program (TAP), Safe Routes to Schools (SRTS), and DEMO funds combined accounted for 8.9% of the total obligation for the Memphis MPO area. The remaining four federal funding sources including National Corridor Planning and Development Program (NCPD), Transportation Enhancement Grant (ENH), National Highway System (NHS), and Economic Stimulus (ES) all had deobligations for FY 2014. A complete list of all of the projects which received obligation/deobligation and the associated funding sources for FY 2014 are shown in Table IV of this document. Table IV also includes the project description, location by county, TIP number, state project number, type of project, funding type, the amount listed in the TIP and the date the funds were made available. Federally funds shown in red are deobligations and are deducted from the total obligated funds for fiscal year 2014.

III. SUMMARY OF 2014 OBLIGATED PROJECTS

Table III: FY 2014 Obligation Amounts by Funding Type for the Memphis MPO:

| | | |
|--|-------------------------|--------------|
| National Highway Performance Program (NHPP): | \$46,317,441.75 | 41.8% |
| Surface Transportation Program (STP): | \$29,568,825.47 | 26.7% |
| Congestion Mitigation & Air Quality Program (CMAQ): | \$17,401,932.23 | 15.7% |
| 5307 Federal Transit Authority Urbanized Area Formula Program: | \$11,722,696.00 | 10.6% |
| Highway Safety Improvement Program (HSIP): | \$2,953,215.14 | 2.7% |
| Interstate Maintenance (IM): | \$2,245,373.66 | 2.0% |
| High Priority Projects (HPP): | \$1,944,833.00 | 1.8% |
| 5337 Federal Transit Authority State of Good Repair Program: | \$1,204,843.00 | 1.1% |
| Bridge Replacement and Rehabilitation (BRR): | \$867,428.88 | 0.8% |
| Transportation Alternatives Program (TAP): | \$231,400.00 | 0.2% |
| Safe Routes to Schools (SRTS): | \$201,895.29 | 0.2% |
| Demonstration Funds (DEMO): | \$100,000.00 | 0.1% |
| | | |
| National Corridor Planning and Development Program (NCPD) | -\$199,177.31* | -0.2% |
| Transportation Enhancement Grant (ENH) | -\$237,217.48* | -0.2% |
| National Highway System (NHS) | -\$288,198.05* | -0.3% |
| Economic Stimulus (ES) & Other Deobligation: | -\$3,283,161.14* | -3.0% |
| Total Obligation: | \$110,752,130.43 | 100% |

* A negative percentage reflects a deobligation.

Figure IV: FY 2014 Obligation Percentages by Funding Type for the Memphis MPO**

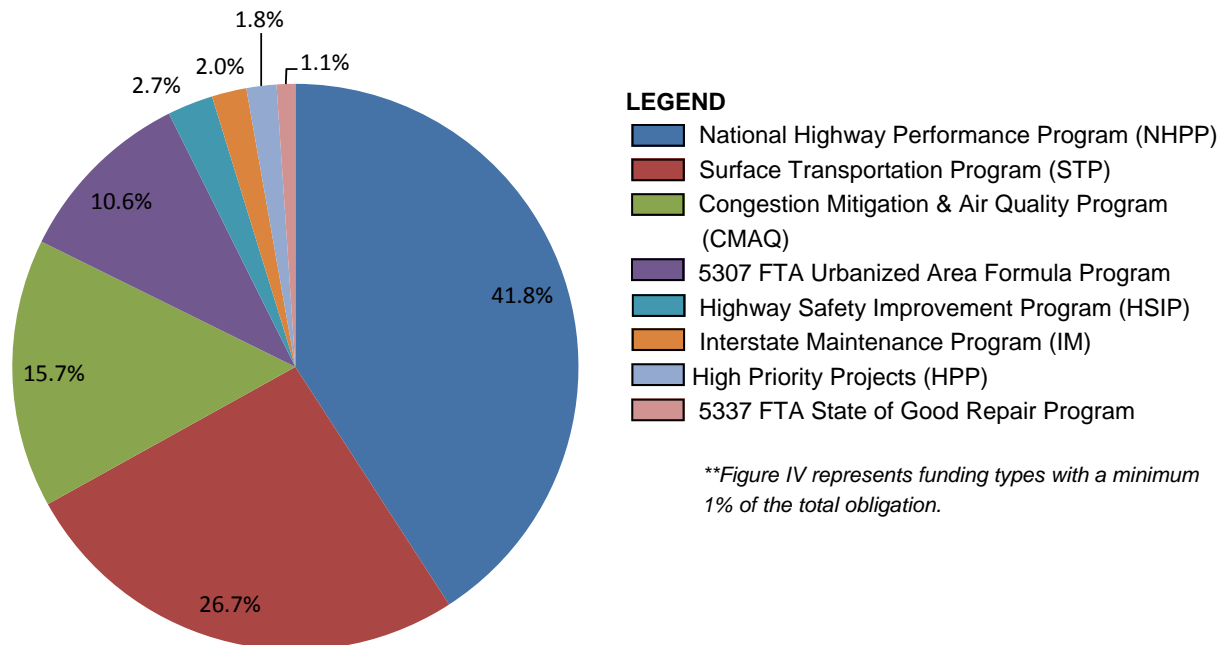


TABLE IV: LIST OF 2014 FEDERALLY OBLIGATED PROJECTS

| DATE | PROJECT NUMBER | COUNTY | ROUTE | DESCRIPTION | FUNDING TYPE | TIP/STIP NUMBER | FEDERAL FUNDS OBLIGATED | TOTAL COST IN TIP |
|-------------------------------------|-----------------------|-----------------|----------|---|-------------------|------------------|-------------------------|-------------------|
| ROADWAY PROJECTS - TENNESSEE | | | | | | | | |
| 10/16/13 | ARRA-STP-M-5012(1) | Shelby | | Knight Arnold Rd, From Cherry St to Mt Moriah Rd in Memphis (Excluding From Hickory Hill Rd to Ridgeway Rd) | ES | TN-ES-L-2009-01 | (\$4,418.65) | \$23,472,119.00 |
| 10/17/13 | ARRA-STP-M-9409(147) | Shelby | | Millbranch Rd, Ball Rd, Ross Rd, Waring Rd, Delano Ave, Main St and Baskin St in Memphis | ES | TN-ES-L-2009-01 | (\$205,079.42) | \$23,472,119.00 |
| 10/21/13 | STP-M-9409(97) | Shelby | | Holmes Rd, From Mill Branch Rd to Tchulahoma Rd | STP-M | STP-M-2002-14 | \$1,602,720.00 | \$2,003,400.00 |
| 10/23/13 | IME-240-1(288) | Shelby | I-240 | From E of the Perkins Rd Exit to S of the Poplar Ave Exit | IM | TN-IM-2011-02 | (\$26,802.41) | \$3,820,000.00 |
| 10/24/13 | IM/NH-40-1(303) | Shelby | I-40 | From SR-177 (Germantown Rd) to E of Canada Rd | IM | TN-IM-2011-02 | \$409,500.00 | \$3,820,000.00 |
| 10/28/13 | ARRA-STP-M-9409(149) | Shelby | | Various Locations on Madison Ave, McLemore Ave, South Parkway East and Front St in Memphis | STP-M | STP-M-2011-04 | \$1,843.53 | \$3,125,000.00 |
| 10/28/13 | STP-M-9417(3) | Shelby | | Progress Rd, From Keough Rd to South St in Collierville | STP-M | STP-M-2011-04 | \$16,800.00 | \$3,125,000.00 |
| 10/28/13 | NHE-86(2) | Fayette, Shelby | SR-86 | From the Mississippi State Line to S of SR-175 (Shelby Dr) | NHS | TN-NHS-2011-02 | (\$791,520.44) | \$500,000.00 |
| 10/29/13 | STP-M-7900(29) | Shelby | | Fite Rd, From SR-3 (US-51) to Woodstock Rd in Memphis | STP-S (Code M240) | STP-M-2011-04 | \$380,193.78 | N/A |
| 10/31/13 | STP-175(18) | Shelby | SR-175 | (Byhalia Rd), From S of Shelby Post Rd to S of SR-385 | STP | STIP 79055 | \$8,788,000.00 | \$11,000,000.00 |
| 11/07/13 | STP-385(20) | Shelby, Fayette | SR-385 | From N of SR-86 (US-72) in Collierville to N of SR-57 (Poplar Ave) in Fayette County | STP | TN-STP-S-2011-01 | (\$292,154.22) | \$5,700,000.00 |
| 11/13/13 | IM-55-1(91) | Shelby | I-55 | From the Mississippi State Line to I-240 | IM | TN-IM-2011-02 | (\$275,593.97) | \$3,820,000.00 |
| 11/16/13 | NH-I-40-1(343) | Shelby | I-40 | From W of Davies Plantation Rd to the Fayette County Line | NHPP | TN-IM-2011-04 | (\$14,026.00) | \$5,250,000.00 |
| 11/16/13 | STP/HSSIP-NHE-385(28) | Shelby | SR-385 | From the SR-14 Ramp to SR-3 (US-51) | STP | TN-STP-S-2011-04 | \$175,000.00 | \$13,641,400.00 |
| 11/18/13 | STP-M-9417(7) | Shelby | | Byhalia Rd, Intersections at Frank Rd and Winchester Rd in Collierville | STP-M | STP-M-2011-04 | (\$77,878.13) | \$3,125,000.00 |
| 11/19/13 | STP-M-9417(4) | Shelby | | Various Locations in Collierville | STP-M | STP-M-2011-04 | (\$50,717.89) | \$3,125,000.00 |
| 11/20/13 | STP-M-NHE-57(53) | Shelby | SR-57 | Intersection at Forest-Hill Irene Rd in Germantown | STP-M | STP-M-2011-04 | (\$59,159.74) | \$3,125,000.00 |
| 11/20/13 | HSP-176(5) | Shelby | SR-176 | From SR-175 to I-240 | HSP | TN-HSP-2011-01 | (\$14,920.71) | \$9,000,000.00 |
| 11/25/13 | IME-40-1(327) | Shelby | I-40 | From Vollintine Ave to Jackson Ave in Memphis | IM | TN-IM-2011-02 | (\$190,137.78) | \$3,820,000.00 |
| 12/03/13 | STP-M-205(21) | Shelby | SR-205 | (Airlie Rd), Intersection at Douglas St in Arlington | STP-M | STP-M-2011-05 | \$1,101,000.00 | \$1,376,250.00 |
| 12/03/13 | TN-I-69(46) | Shelby | I-69PROP | From S of SR-388 (North Watkins St) to S to Fite Rd | NCPD | NCPD-2005-01 | (\$199,177.32) | \$4,000,000.00 |
| 12/10/13 | STP-M-2818(6) | Shelby | | Walnut Grove Rd, From I-240 to E of the Wolf River Bridge in Memphis | STP-M | STP-M-2011-04 | (\$1,750,295.01) | \$3,125,000.00 |
| 12/12/13 | STP-M-9409(158) | Shelby | | Milton Wilson Blvd (Middle), From White Oak Subdivision to Kensington Subdivision | STP-L | STP-L-2011-01 | \$270,924.00 | \$1,999,708.00 |
| 12/17/13 | STP/HSP-177(29) | Shelby | SR-177 | From Stout Rd to SR-57 (US-72, Poplar Ave) | STP | SSTP-2008-18 | (\$36,318.67) | \$3,215,000.00 |
| 12/17/13 | STP/HSP-175(16) | Shelby | SR-175 | (Byhalia Rd), From Shelby Dr West to SR-57 (US-72, Poplar Ave) | STP | SSTP-2008-18 | (\$7,668.51) | \$3,215,000.00 |
| 12/23/13 | STP-175(18) | Shelby | SR-175 | (Byhalia Rd), From S of Shelby Post Rd to S of SR-385 | STP | STIP 79055 | (\$3,142,989.00) | \$11,000,000.00 |
| 01/02/14 | NH/HSP-15(177) | Shelby | SR-15 | From Bartlett Blvd to Fletcher Creek Bridge | NHPP | TN-NHPP-2014-04 | \$992,000.00 | \$35,000,000.00 |
| 01/13/14 | IME-240-1(288) | Shelby | I-240 | From E of the Perkins Rd Exit to S of the Poplar Ave Exit | IM | TN-IM-2011-02 | (\$0.02) | \$3,820,000.00 |
| 01/14/14 | IM/NH-I-55-1(119) | Shelby | I-55 | Interchange at Crump Blvd | NHPP | TN-IM-2011-01 | \$2,880,000.00 | \$3,200,000.00 |
| 01/15/14 | STP-M-9409(169) | Shelby | | Six City Streets in Memphis - South Prescott St, East Brooks Rd, Horn Lake Rd, Neely Rd, Front St and East St | STP-M | STP-M-2009-03 | \$199,648.00 | \$7,296,603.00 |
| 01/21/14 | STP-M-5131(10) | Shelby | | Kirby Whitten Pkwy, From the Bartlett City Limits to St. Elmo Rd | STP-M | STP-M-2009-03 | \$8,000.00 | \$7,296,603.00 |
| 01/21/14 | STP-M-5431(10) | Shelby | | Wolf River Blvd, From SR-177 (Germantown Rd) to Kimbrough Rd and From Farmington Blvd to the Germantown City Limits | STP-M | STP-M-2009-03 | \$4,000.00 | \$7,296,603.00 |
| 01/30/14 | STP-M-9417(10) | Shelby | | Various Streets in Collierville | STP-M | STP-M-2009-03 | \$9,840.00 | \$7,296,603.00 |
| 02/05/14 | STP-M-9409(183) | Shelby | | Various Roads in Memphis - Group 5 | STP-M | STP-M-2009-03 | \$45,280.00 | \$7,296,603.00 |
| 02/20/14 | NH/HSP-1(319) | Shelby | SR-1 | (US-51), From SR-4 (E.H. Crump Blvd) to SR-4 (Danny Thomas Blvd) | NHPP | TN-NHPP-2014-04 | \$886,400.00 | \$35,000,000.00 |
| 02/20/14 | NH/HSP-204(8) | Shelby | SR-204 | From Raleigh-Lagrange Rd to SR-14 | NHPP | TN-NHPP-2014-04 | \$1,399,200.00 | \$35,000,000.00 |
| 02/20/14 | STP/HSP-205(24) | Shelby | SR-205 | From SR-15 to I-40 | STP | TN-STP-2014-01 | \$412,000.00 | \$3,000,000.00 |
| 02/21/14 | IME-240-1(291) | Shelby | I-240 | From I-55 Ramp to E of SR-3 (US-51) | IM | TN-IM-2011-04 | (\$172,520.04) | \$6,665,021.00 |
| 02/25/14 | IM-40-1(316) | Shelby | I-40 | Interchange at Canada Rd | IM | NHS-2002-04 | \$3,972,640.00 | \$1,200,000.00 |
| 02/25/14 | NH-I-40-1(283) | Shelby | I-40 | Interchange at Canada Rd | NHS | 79014 | \$274,500.00 | N/A |
| 02/26/14 | STP-M-NH-177(37) | Shelby | SR-177 | (Germantown Rd) - Realignment | STP-M | STP-M-2014-02 | \$40,000.00 | \$50,000.00 |
| 03/12/14 | NH-I-55-1(118)8 | Shelby | I-55 | Interchange at Mallory Ave, LM 8.92 in Memphis | IM | TN-IM-2011-02 | \$315,000.00 | \$3,820,000.00 |
| 03/12/14 | NH/HPP-1-40-1(294) | Shelby | I-40 | Interchange at I-240 East in Memphis (Phase 2) | NHPP | NHS-2004-01 | \$8,364,320.00 | \$128,000,000.00 |
| 03/12/14 | NH/HPP-1-40-1(294) | Shelby | I-40 | Interchange at I-240 East in Memphis (Phase 2) | HPP | NHS-2004-01 | \$83,805.00 | \$9,375,000.00 |
| 03/13/14 | ARRA-STP-M-9411(6) | Shelby | | Various Locations in Millington | ES | TN-ES-L-2009-01 | (\$24,996.78) | \$23,472,119.00 |
| 03/13/14 | IM/HPP/NH-55-1(122) | Shelby | I-55 | Interchange at Mallory Ave, LM 8.92 in Memphis | NHPP | TN-IM-2011-02 | \$836,000.00 | \$15,200,000.00 |
| 03/17/14 | IM-55-1(121) | Shelby | I-55 | Interchange at Mallory Ave, LM 8.92 in Memphis | IM | TN-IM-2011-02 | (\$765,000.00) | \$3,820,000.00 |
| 03/18/14 | IME-240-1(292) | Shelby | I-240 | From E of I-55 to E of Perkins Rd | IM | TN-IM-2011-04 | \$355,000.00 | \$12,665,021.00 |
| 03/19/14 | NH/HSP-15(177) | Shelby | SR-15 | From Bartlett Blvd to Fletcher Creek Bridge | NHPP | TN-NHPP-2014-04 | (\$3,670.00) | \$35,000,000.00 |
| 03/21/14 | STP-M-NHE-57(42) | Shelby | SR-57 | (US-72, Poplar Ave), From E of Sweetbriar to I-240 in Memphis | STP-M | STP-M-2000-04 | \$1,448,000.00 | \$3,620,000.00 |
| 03/28/14 | STP-M-2870(3) | Shelby | | American Way, From S of Democrat to Lamar Ave and Relocated Farrisview | STP-M | STP-M-2008-04 | (\$20,611.71) | \$4,625,000.00 |
| 04/08/14 | NH-I-40-1(283) | Shelby | I-40 | Interchange at Canada Rd | NHPP | NHS-2002-04 | \$21,510,000.00 | \$23,900,000.00 |
| 04/29/14 | DEMO-9409(88) | Shelby | | Memphis Airport, Plough Blvd Access Rd in Memphis | TN080 | STP-M-2006-04 | (\$491,964.00) | \$491,964.00 |
| 04/29/14 | DEMO-9409(88) | Shelby | | Memphis Airport, Plough Blvd Access Rd in Memphis | TN059 | STP-M-2006-04 | (\$2,556,702.29) | \$3,243,750.00 |
| 05/02/14 | NH/HSP-1(319) | Shelby | SR-1 | (US-51), From SR-4 (E.H. Crump Blvd) to SR-4 (Danny Thomas Blvd) | NHPP | TN-NHPP-2014-04 | \$20,552.00 | \$12,000,000.00 |
| 05/02/14 | STP/HSP-205(24) | Shelby | SR-205 | From SR-15 to I-40 | STP | TN-STP-2014-01 | (\$45,445.00) | \$3,000,000.00 |
| 05/02/14 | NH/HSP-204(8) | Shelby | SR-204 | From Raleigh-Lagrange Rd to SR-14 | NHPP | TN-NHPP-2014-04 | \$88,673.00 | \$12,000,000.00 |
| 05/05/14 | STP-M-5134(10) | Shelby | | Raleigh LaGrange Rd, From Macon Rd to Appling Rd | STP-M | STP-M-2009-03 | \$12,000.00 | \$7,296,603.00 |
| 05/06/14 | STP-M-1458(10) | Shelby | | Macon Rd, From Houston Levee Rd to Pisgah Rd | STP-M | STP-M-2009-03 | \$12,000.00 | \$7,296,603.00 |
| 05/20/14 | IME-40-1(327) | Shelby | I-40 | From Vollintine Ave to Jackson Ave in Memphis | IM | TN-IM-2011-02 | \$13,792.63 | \$3,820,000.00 |
| 05/29/14 | IM/NH-I-55-1(119) | Shelby | I-55 | Interchange at Crump Blvd | IM | TN-IM-2011-01 | \$576,900.00 | \$1,044,910.00 |

| | | | | | | | | |
|---------------|----------------|--------|--------|---|-------|----------------|------------------------|-----------------|
| 06/06/14 | STP-NHE-57(36) | Shelby | SR-57 | (US-72), From Miller Farms Rd to Dogwood Rd in Germantown | STP | TN-STP-2011-01 | (\$1,308,000.00) | \$5,700,000.00 |
| 06/12/14 | F/STP-385(3) | Shelby | SR-385 | (US-231), From Singleton to Austin Peay | STP | 99584 | (\$203,948.24) | N/A |
| 07/02/14 | STP-M-1(333) | Shelby | SR-1 | (US-70), From SR-385 to W of Airline Rd in Arlington | STP-M | STP-M-2014-09 | \$16,000.00 | \$20,000.00 |
| 07/02/14 | STP-M-2734(10) | Shelby | | Airline Rd, From I-40 to N of Milton Wilson Blvd in Arlington | STP-M | STP-M-2014-10 | \$28,000.00 | \$35,000.00 |
| 07/03/14 | NH-I-40-1(283) | Shelby | I-40 | Interchange at Canada Rd | NHPP | NHS-2002-04 | \$4,208,512.00 | \$28,900,000.00 |
| 08/12/14 | STP-M-5131(10) | Shelby | | Kirby Whitten Pkwy, From the Bartlett City Limits to St. Elmo Rd | STP-M | STP-M-2009-03 | \$12,000.00 | \$7,296,603.00 |
| 08/27/14 | STP-M-9419(7) | Shelby | | Various Streets in Bartlett | STP-M | STP-M-2009-03 | (\$608,026.49) | \$7,296,603.00 |
| 09/11/14 | STP-M-5131(10) | Shelby | | Kirby Whitten Pkwy, From the Bartlett City Limits to St. Elmo Rd in Bartlett | STP-M | STP-M-2009-03 | \$1,732,000.00 | \$7,296,603.00 |
| 09/18/14 | STP-177(23) | Shelby | SR-177 | (Germantown Rd), From Crestridge Rd to Stout Rd | STP | SSTP-2008-01 | \$144,000.00 | \$1,469,866.00 |
| 09/19/14 | STP-M-5431(10) | Shelby | | Wolf River Blvd, From SR-177 (Germantown Rd) to Kimbrough Rd and From Farmington Blvd to the Germantown City Limits | STP-M | STP-M-2009-03 | \$80,000.00 | \$7,296,603.00 |
| TOTAL: | | | | | | | \$50,422,301.50 | |

ROADWAY PROJECTS - MISSISSIPPI

| | | | | | | | | |
|---------------|------------------|------------------|--------|--|-----|--|------------------------|--|
| 7/15/2014 | 106882/0211(057) | DeSoto/ Marshall | SR-302 | SR 302 East of Polk Rd to SR 309 - Mill & Overlay | STP | | \$2,579,760.00 | |
| 7/30/2014 | 104574/0194(501) | DeSoto | | Getwell Rd from SR 302 to State Line Rd - Add lanes | STP | | \$219,101.00 | |
| 7/30/2014 | 104574/0194(501) | DeSoto | | Getwell Rd from SR 302 to State Line Rd - Add lanes | STP | | 3,406,771.00 | |
| 7/30/2014 | 104574/0194(501) | DeSoto | | Getwell Rd from SR 302 to State Line Rd - Add lanes | STP | | \$2,495,129.00 | |
| 8/4/2014 | 106814/0109(007) | DeSoto | | Commerce Street and Nesbit Rd - Resurfacing | STP | | \$20,222.00 | |
| 8/7/2014 | 106364/0096(016) | DeSoto | | Hwy 61 - Beginning 1 mi S of SR 3 and going N approx 10 mi to MS/TN SL. Overlay. Pavement Rehab | NHS | | (\$600,004.00) | |
| 9/8/2014 | 211030 | | SR-302 | SR 302 from US 78 to Hack's Cross Rd. Fencing | EM | | (\$1.00) | |
| 9/8/2014 | 104919/7903(001) | DeSoto | | Craft Rd from Goodman Rd (SR 302) to the South Ramps of US Hwy 78 - Widening from 2 lanes to 5 lanes | STP | | \$3,865,218.00 | |
| 9/11/2014 | 106882/0211(057) | DeSoto/ Marshall | SR-302 | SR 302 East of Polk Rd to SR 309 - Mill & Overlay | STP | | \$157,920.00 | |
| 9/12/2014 | 106492/0017(037) | DeSoto | | Tulane Rd Connector Project | STP | | \$342,486.00 | |
| 9/23/2014 | 104795/7905(001) | DeSoto | | Alexander Rd from Goodman Rd to N of SR 302 - Widen from 2 to 4 lanes, curb, gutter, sidewalk | STP | | (\$106,224.00) | |
| 9/25/2014 | 106814/0109(007) | DeSoto | | Commerce Street and Nesbit Rd - Resurfacing - PE & CONSTR | STP | | \$316,360.00 | |
| TOTAL: | | | | | | | \$12,696,738.00 | |

BRIDGE PROJECTS - TENNESSEE

| | | | | | | | | |
|---------------|------------------------|---------|-------|---|-------|------------------|-----------------------|-----------------|
| 10/16/13 | STP-M-205(20) | Shelby | | Airline Rd, Bridge over Hall Creek in Arlington | STP-M | STP-M-2011-01 | \$920,896.00 | \$1,438,900.00 |
| 10/29/13 | BHI/BSRF-40-1(291)0 | Shelby | I-40 | Bridge over Mississippi River (Phase 4) | BRR-S | TN-BRR-S-2011-02 | (\$952,558.64) | \$100,000.00 |
| 11/01/13 | STP-M-9419(8) | Shelby | | Old Brownsville Rd, Bridge over Buckhead Creek/Franks Branch in Bartlett | STP-M | STP-M-2009-03 | \$48,000.00 | \$14,908,833.00 |
| 11/19/13 | IM-40-1(313) | Shelby | I-40 | Bridge over Mississippi River (Seismic Retrofit Phase 7) | IM | TN-IM-2011-02 | (\$109,528.37) | \$3,820,000.00 |
| 11/19/13 | BR-STP-2807(5) | Shelby | | South Pkwy, Brige over ICG R/R, LM 1.00 in Memphis | BRR-S | TN-BRR-S-2011-02 | \$26,849.78 | \$100,000.00 |
| 12/23/13 | STP-M-9409(118) | Shelby | | Veterans Pkwy West, From Dakar St to Creek Mill Cove and West Union | STP-M | STP-M-2008-02 | (\$213,241.40) | \$3,946,500.00 |
| 01/10/14 | STP-M-9420(7) | Shelby | | McVay Rd, From McVay Cove to Messick Rd in Germantown | STP-M | STP-M-2014-12 | \$52,000.00 | \$2,874,875.00 |
| 02/05/14 | STP-M-9409(182) | Shelby | | Brooks Rd, Bridge over Days Creek in Memphis | STP-M | STP-M-2014-12 | \$10,000.00 | \$2,874,875.00 |
| 02/07/14 | STP-M-NH-57(62) | Shelby | SR-57 | (Poplar Ave) at Various Locations - Phase II | STP-M | STP-M-2014-12 | \$72,000.00 | \$2,874,875.00 |
| 02/18/14 | BR-STP-1(283) | Shelby | SR-1 | Bridge over Loosahatchie River, LM 30.36 | STP | TN-STP-2014-01 | \$35,200.00 | \$3,000,000.00 |
| 02/19/14 | BHI/BSRF/IMD-40-1(278) | Shelby | I-40 | Bridge over Mississippi River Phase 2 | BRR-S | TN-BRR-S-2011-02 | \$236,162.27 | \$200,000.00 |
| 02/21/14 | BH-NH-57(49) | Shelby | SR-57 | (US-72), Bridge WB Ramp to I-240 SB, LM 8.08 | NHPP | TN-NHPP-2014-04 | \$186,132.00 | \$35,000,000.00 |
| 02/27/14 | NH-ITS/OCC4-FY14(7) | Shelby | | Memphis ITS Control Center FY 2014 - FY 2016 (Operations) | NHPP | TN-NHPP-2014-04 | \$528,000.00 | \$35,000,000.00 |
| 02/27/14 | NH-ITS/UPC4-FY14(9) | Shelby | | Memphis ITS Control Center FY 2014 - FY 2016 (Utilities, Power, and Communications) | NHPP | TN-NHPP-2014-04 | \$288,000.00 | \$35,000,000.00 |
| 02/27/14 | NH-FSP4-FY14(8) | Shelby | | Freeway Service Patrol - Memphis (FY 2014 - FY 2016) | NHPP | TN-NHPP-2014-04 | \$2,064,240.00 | \$35,000,000.00 |
| 02/28/14 | BSRF/BHI-40-1(295) | Shelby | I-40 | Bridge over Mississippi River (Phase 5) - Seismic Retrofit | NHPP | 79010 | \$960,000.00 | N/A |
| 03/04/14 | BR-STP-3(66) | Shelby | SR-3 | (US-51), Bridge over Wolf River, LM 15.25 in Memphis | BRR-S | BRR-S-2008-01 | \$427,200.00 | N/A |
| 03/04/14 | BR-STP-3(66) | Shelby | SR-3 | (US-51), Bridge over Wolf River, LM 15.25 in Memphis | STP | BRR-S-2008-01 | \$824,800.00 | N/A |
| 03/05/14 | NH-I-240-1(294) | Shelby | I-240 | Overhead Bridges at Norfolk Southern R/R, SR-57 (Poplar Ave, EB & WB) | NHPP | TN-NHPP-2014-01 | \$900,000.00 | \$1,000,000.00 |
| 03/17/14 | BR-STP-1(283) | Shelby | SR-1 | Bridge over Loosahatchie River, LM 30.36 | STP | TN-STP-2014-01 | \$258,400.00 | \$3,000,000.00 |
| 03/31/14 | BH-NH-57(49) | Shelby | SR-57 | (US-72), Bridge WB Ramp to I-240 SB, LM 8.08 | NHPP | TN-NHPP-2014-04 | (\$1,691.25) | \$12,000,000.00 |
| 05/08/14 | STP-M-9409(186) | Shelby | | 11 Bridges at Various Locations in Memphis | STP-M | STP-M-2014-12 | \$38,384.00 | \$2,814,875.00 |
| 05/15/14 | STP-M-NHE-57(46) | Shelby | SR-57 | (Poplar Ave) at Various Locations | STP-M | STP-M-2011-03 | \$156,800.00 | \$3,125,000.00 |
| 05/19/14 | STP-M-9409(182) | Shelby | | Brooks Rd, Bridge over Days Creek in Memphis | STP-M | STP-M-2014-12 | \$10,000.00 | \$2,814,875.00 |
| 05/19/14 | STP-M-9419(6) | Shelby | | Bartlett Rd, Bridge over Harrington Creek in Bartlett | STP-M | STP-M-2014-12 | \$720,000.00 | \$2,814,875.00 |
| 06/02/14 | CM-57(52) | Fayette | SR-57 | Bridge over Norfolk Southern R/R (MRIMF) | CMAQ | TN-CMAQ-2011-02 | \$350,040.00 | \$14,200,000.00 |
| 06/16/14 | BR-STP-14(37) | Shelby | SR-14 | (US-61), From South Pkwy to McLemore Ave (Ravine, LM 9.51 and I.C. R/R, LM 9.68) in Memphis | BRR-S | TN-BRR-S-2011-01 | \$689,000.00 | \$28,000,000.00 |
| 06/16/14 | BR-STP-2807(4) | Shelby | | South Pkwy, Bridge over ICG R/R and Patton St, LM 1.17 in Memphis | BRR-S | BRR-S-2008-02 | \$200,000.00 | \$250,000.00 |
| 06/16/14 | BR-NH-57(35) | Shelby | SR-57 | Bridges over SR-23, CSXT & IC R/R, Union Pacific Railway and Scott St, LM 1.88 in Memphis | BRR-S | BRR-S-2008-01 | \$300,000.00 | \$28,000,000.00 |
| 06/23/14 | BR-NH-14(46) | Shelby | SR-14 | Bridge over CNIC R/R and Nonconnah Creek, LM 7.13 SBL | NHPP | TN-NHPP-2014-04 | \$124,000.00 | \$12,000,000.00 |
| 07/03/14 | BR-NH-57(35) | Shelby | SR-57 | Bridges over SR-23, CSXT & IC R/R, Union Pacific R/R and Scott St, LM 1.88 in Memphis | BRR-S | BRR-S-2008-01 | \$38,145.19 | \$28,000,000.00 |
| 08/05/14 | BSRF/BHI-40-1(295) | Shelby | I-40 | Bridge over Mississippi River (Phase 5) - Seismic Retrofit | BRR-S | 79010 | (\$97,369.72) | N/A |
| 08/18/14 | BR-NH-14(46) | Shelby | SR-14 | Bridge over CNIC R/R and Nonconnah Creek, LM 7.13 SBL | NHPP | TN-NHPP-2014-04 | \$100,800.00 | \$12,000,000.00 |
| TOTAL: | | | | | | | \$9,190,659.86 | |

| BRIDGE PROJECTS - MISSISSIPPI | | | | | | | | | |
|-------------------------------|------------------|----------|--------|---|-----|--|---------------|-----------------------|--|
| 9/19/2014 | 100299/0914(007) | Marshall | SR-309 | SR 309 between US 78 and Barton - Bridge Replacement - ROW & CONSTR | STP | | | \$1,198,517.00 | |
| 9/19/2014 | 100299/0914(007) | Marshall | SR-309 | SR 309 between US 78 and Barton - Bridge Replacement - ROW & CONSTR | STP | | | \$671,483.00 | |
| 9/26/2014 | 1053330603(020) | Marshall | SR-4 | SR 4 Replace bridge over Burlington Northern RR - PE for Design and ROW | STP | | | \$1,395,604.00 | |
| | | | | | | | TOTAL: | \$3,265,604.00 | |

| ITS/SIGNAL/SAFETY & OTHER MITIGATION PROJECTS - TENNESSEE | | | | | | | | | |
|---|----------------------|----------|--------|--|--------|------------------|--|----------------|-----------------|
| 10/07/13 | STP-H-205(17) | Shelby | SR-205 | (Navy Rd), Intersection at Hornet Ave in Millington | STP | TN-STP-S-2011-03 | | (\$674.71) | \$400,000.00 |
| 10/11/13 | HSIP-2875(3) | Shelby | | Sycamore View Rd, Intersection at I-40 Eastbound Ramp | HSIP | TN-HSIP-2011-01 | | (\$18,000.00) | \$9,000,000.00 |
| 10/15/13 | HPP-9409(101) | Shelby | | Center for Advanced Intermodal Technologies at the University of Memphis | HPP-L | HPP-2006-03 | | \$1,861,028.00 | \$2,326,285.00 |
| 10/23/13 | HSIP-I-40-1(344) | Shelby | I-40 | Interchange at Whitten Rd (Eastbound Exit Ramp, Exit 14) (Ramp Queue Project) | HSIP | TN-HSIP-2011-01 | | \$36,000.00 | \$9,000,000.00 |
| 10/24/13 | HSIP-5135(10) | Shelby | | Appling Rd, Intersections at I-40 E and W Ramps in Memphis | HSIP | TN-HSIP-2011-01 | | \$175,000.00 | \$9,000,000.00 |
| 10/31/13 | HSIP-NH-57(61) | Shelby | SR-57 | Intersection at Brookfield Ave (RSAR) | HSIP | TN-HSIP-2011-01 | | \$4,500.00 | \$9,000,000.00 |
| 11/16/13 | STP/HSIP-NHE-385(28) | Shelby | SR-385 | From the SR-14 Ramp to SR-3 (US-61) | HSIP | TN-HSIP-2011-01 | | \$27,000.00 | \$9,000,000.00 |
| 11/19/13 | STP-R-15(136) | Shelby | SR-15 | (Stage Rd) at CSX R/R, LM 3.02 in Bartlett | STP | TN-STP-S-2011-03 | | (\$2,189.27) | \$400,000.00 |
| 11/19/13 | HSIP-1(223) | Shelby | SR-1 | (US-70), Intersection at Canada Rd, LM 22.85 in Lakeland | HSIP | TN-HSIP-2011-01 | | \$101,876.82 | \$9,000,000.00 |
| 12/17/13 | STP/HSIP-177(29) | Shelby | SR-177 | From Stout Rd to SR-57 (US-72, Poplar Ave) | HSIP | HSIP-2008-01 | | \$10,124.10 | \$8,150,000.00 |
| 12/17/13 | STP/HSIP-175(16) | Shelby | SR-175 | (Byhalia Rd), From Shelby Dr West to SR-57 (US-72, Poplar Ave) | HSIP | HSIP-2008-01 | | \$13,595.07 | \$8,150,000.00 |
| 12/18/13 | STP-M-4384(5) | Shelby | | Altruria Rd, Intersection at Memphis-Arlington Rd in Bartlett | STP-M | STP-M-2009-06 | | \$20,000.00 | \$13,282,992.00 |
| 01/02/14 | NH/HSIP-15(177) | Shelby | SR-15 | From Bartlett Blvd to Fletcher Creek Bridge | HSIP | TN-HSIP-2014-01 | | \$232,200.00 | \$3,000,000.00 |
| 01/07/14 | HSIP-803(6) | Shelby | | Raleigh Millington Rd, Intersection at Old Raleigh Millington Rd | HSIP | TN-HSIP-2014-01 | | \$34,700.00 | \$3,000,000.00 |
| 01/08/14 | HSIP-2870(4) | Shelby | | Tchulahoma Rd, From Shelby Dr to Raines Rd | HSIP | TN-HSIP-2014-01 | | \$113,400.00 | \$3,000,000.00 |
| 01/08/14 | HSIP-2874(1) | Shelby | | St. Elmo Ave, Intersection at Mountain Terrace St in Memphis | HSIP | TN-HSIP-2014-01 | | \$17,900.00 | \$3,000,000.00 |
| 01/09/14 | SRTS-9409(154) | Shelby | | Rozelle Elementary School | SRTS | SRTS-2008-01 | | \$204,166.00 | \$224,125.00 |
| 01/10/14 | HSIP-2819(2) | Shelby | | Hawkins Mill Rd, E of University St | HSIP | TN-HSIP-2011-01 | | (\$30,625.99) | \$9,000,000.00 |
| 01/14/14 | HSIP-I-40-1(342) | Shelby | I-40 | From I-40 Eastbound Ramp to SR-177 (Germantown Rd) (RSAR) | HSIP | TN-HSIP-2011-01 | | (\$18,000.00) | \$9,000,000.00 |
| 01/21/14 | CM-7900(43) | Shelby | | Various Locations in Shelby County, New Signals - Set 1 | CMAQ-M | CMAQ-2002-09 | | \$25,445.00 | \$18,406,327.00 |
| 01/21/14 | CM-7900(50) | Shelby | | Various Locations Throughout Shelby County - Set 8 | CMAQ-M | CMAQ-2002-09 | | \$35,700.00 | \$18,406,327.00 |
| 01/21/14 | CM-7900(49) | Shelby | | Various Locations Throughout Shelby County - Set 7 | CMAQ-M | CMAQ-2002-09 | | \$21,500.00 | \$18,406,327.00 |
| 01/22/14 | CM-7900(51) | Shelby | | Various Locations Throughout Shelby County - Set 9 | CMAQ-M | CMAQ-2002-09 | | \$78,414.00 | \$18,406,327.00 |
| 01/23/14 | CM-9409(160) | Shelby | | Various Locations Throughout Shelby County | CMAQ-M | CMAQ-2002-09 | | (\$280,131.00) | \$18,406,327.00 |
| 01/24/14 | TAP-M-9409(174) | Shelby | | Hanley Elementary School in Memphis | TAP | TAP-2014-01 | | \$2,880.00 | \$2,890,761.00 |
| 01/24/14 | TAP-M-9409(175) | Shelby | | Dunbar Elementary School in Memphis | TAP | TAP-2014-01 | | \$2,400.00 | \$2,890,761.00 |
| 01/24/14 | CM-NH-14(54) | Shelby | SR-14 | (US-61, Third St), From Mitchell Rd to Linden Ave - Set 10 | CMAQ-M | CMAQ-2002-09 | | \$119,072.00 | \$18,406,327.00 |
| 01/30/14 | STP-M-9409(180) | Shelby | | Various Locations in Memphis - Group 2 | STP-M | STP-M-2009-06 | | \$60,000.00 | \$2,965,688.00 |
| 01/30/14 | STP-M-9409(181) | Shelby | | Various Intersections in Memphis - Group 3 | STP-M | STP-M-2009-06 | | \$50,000.00 | \$2,965,688.00 |
| 01/31/14 | STP-M-NH-14(56) | Shelby | SR-14 | (Jackson Ave) at Various Intersections in Memphis - Group 1 | STP-M | STP-M-2009-06 | | \$60,000.00 | \$2,965,688.00 |
| 02/05/14 | HSIP-I-55-1(125) | Shelby | I-55 | (US-64), From Ramps at Crump Blvd (Exit 12) to I-55 Westbound Ramp; and Crump Blvd, From Kentucky St to I-55 | HSIP | TN-HSIP-2011-01 | | (\$160,000.00) | \$9,000,000.00 |
| 02/05/14 | HSIP-R00S(183) | Shelby | | A.W. Willis Ave at IC R/R, LM 0.032 in Memphis | HSIP | TN-HSIP-2014-01 | | \$15,000.00 | \$3,000,000.00 |
| 02/05/14 | STP-R-2861(3) | Shelby | | E. McLemore Ave at BNSF R/R, LM 6.52 in Memphis | STP | TN-STP-2014-01 | | \$15,000.00 | \$3,000,000.00 |
| 02/07/14 | STP-R-2800(37) | Shelby | | Chelsea Ave at IC R/R, LM 4.17 in Memphis | STP | TN-STP-2014-01 | | \$15,000.00 | \$3,000,000.00 |
| 02/07/14 | STP-R-2878(3) | Shelby | | Raleigh-LaGrange Rd at CSX R/R, LM 3.33 in Memphis | STP | TN-STP-2014-01 | | \$15,000.00 | \$3,000,000.00 |
| 02/18/14 | STP-R-2865(3) | Shelby | | Pendleton St at BNSF R/R, LM 1.13 in Memphis | STP | TN-STP-2014-01 | | \$15,000.00 | \$3,000,000.00 |
| 02/18/14 | STP-R-2821(4) | Shelby | | Hollywood St at Illinois Central R/R, LM 0.35 in Memphis | STP | TN-STP-2014-01 | | \$15,000.00 | \$3,000,000.00 |
| 02/18/14 | STP-R-2807(9) | Shelby | | South Pkwy E at BNSF R/R, LM 3.84 in Memphis | STP | TN-STP-2014-01 | | \$15,000.00 | \$3,000,000.00 |
| 02/18/14 | STP-R-2824(7) | Shelby | | Highland Rd at Norfolk Southern R/R, LM 2.68 in Memphis | STP | TN-STP-2014-01 | | \$15,000.00 | \$3,000,000.00 |
| 02/18/14 | STP-R-2841(10) | Shelby | | Channel Ave at BNSF R/R, LM 7.19 in Memphis | STP | TN-STP-2014-01 | | \$15,000.00 | \$3,000,000.00 |
| 02/18/14 | STP-R-2883(2) | Shelby | | Democrat Rd at BNSF R/R, LM 0.33 in Memphis | STP | TN-STP-2014-01 | | \$15,000.00 | \$3,000,000.00 |
| 02/18/14 | STP-R-175(21) | Shelby | SR-175 | at BNSF R/R, LM 12.41 in Memphis | STP | TN-STP-2014-01 | | \$15,000.00 | \$3,000,000.00 |
| 02/18/14 | STP-R-5056(10) | Shelby | | Pilot Dr at BNSF R/R, LM 4.13 in Memphis | STP | TN-STP-2014-01 | | \$15,000.00 | \$3,000,000.00 |
| 02/19/14 | CM-098-4(12) | Shelby | | ITS Control Center for Memphis | CMAQ | NHS-2002-03B | | \$276,500.18 | \$2,200,000.00 |
| 02/20/14 | NH/HSIP-1(319) | Shelby | SR-1 | (US-51), From SR-4 (E.H. Crump Blvd) to SR-4 (Danny Thomas Blvd) | HSIP | TN-HSIP-2014-01 | | \$603,000.00 | \$3,000,000.00 |
| 02/20/14 | NH/HSIP-204(8) | Shelby | SR-204 | From Raleigh-Lagrange Rd to SR-14 | HSIP | TN-HSIP-2014-01 | | \$225,000.00 | \$3,000,000.00 |
| 02/20/14 | STP/HSIP-205(24) | Shelby | SR-205 | From SR-15 to I-40 | HSIP | TN-HSIP-2014-01 | | \$55,700.00 | \$3,000,000.00 |
| 02/25/14 | STP-M-NH-177(36) | Shelby | SR-177 | (Germantown Rd) at Wolf River Blvd Intersection | STP-M | STP-M-2014-07 | | \$40,000.00 | \$50,000.00 |
| 03/12/14 | CM-9409(160) | Shelby | | Various Locations Throughout Shelby County | CMAQ-M | CMAQ-2002-09 | | (\$290.00) | \$18,406,327.00 |
| 03/12/14 | CM-7900(40) | Shelby | | 22 Intersections throughout Shelby County (Retiming/VD/EVP/Loop Replacement) | CMAQ-M | CMAQ-2002-09 | | \$290.00 | \$18,406,327.00 |
| 03/13/14 | HSIP-R-5260(10) | Shelby | | Orchi Rd at CSX R/R, LM 0.14 in Memphis | HSIP | TN-HSIP-2014-01 | | \$15,000.00 | \$3,000,000.00 |
| 03/19/14 | NH/HSIP-15(177) | Shelby | SR-15 | From Bartlett Blvd to Fletcher Creek Bridge | HSIP | TN-HSIP-2014-01 | | \$45,443.00 | \$3,000,000.00 |
| 03/31/14 | HSIP-R00S(42) | Shelby | | Castalia St at BNSF R/R, LM 0.47 in Memphis | HSIP | HSIP-2008-01 | | \$26,535.85 | \$8,000,000.00 |
| 04/14/14 | TIGER-M2M(1) | Shelby | | Main St to Main St Multi-Modal Connector Project (Harahan Bridge) | CMAQ-M | Tiger IV-2012-01 | | \$1,000,000.00 | \$1,850,000.00 |
| 05/02/14 | NH/HSIP-1(319) | Shelby | SR-1 | (US-51), From SR-4 (E.H. Crump Blvd) to SR-4 (Danny Thomas Blvd) | HSIP | TN-HSIP-2014-01 | | (\$63,362.00) | \$3,000,000.00 |
| 05/02/14 | STP/HSIP-205(24) | Shelby | SR-205 | From SR-15 to I-40 | HSIP | TN-HSIP-2014-01 | | \$814.00 | \$3,000,000.00 |
| 05/02/14 | NH/HSIP-204(8) | Shelby | SR-204 | From Raleigh-Lagrange Rd to SR-14 | HSIP | TN-HSIP-2014-01 | | \$14,941.00 | \$3,000,000.00 |
| 05/23/14 | HSIP-R-177(28) | Shelby | SR-177 | (West St) at Norfolk Southern R/R, LM 2.57 in Germantown | HSIP | HSIP-2008-01 | | \$24,000.00 | \$8,000,000.00 |
| 05/23/14 | HSIP-R00S(55) | Shelby | | Poplar Pike at Norfolk Southern R/R, LM 3.63 in Germantown | HSIP | 99220 | | \$4,000.00 | \$79,848,243.00 |
| 05/29/14 | HSIP-2814(6) | Shelby | | Perkins Rd, Intersection at Mallory Rd (RSAR) | HSIP | TN-HSIP-2014-01 | | \$36,000.00 | \$3,000,000.00 |
| 06/09/14 | NH-I-REG4(119) | Region 4 | | Freeway Service Patrol - Memphis (FY 2013) | NHS | TN-STP-S-2011-05 | | \$828,827.39 | \$2,470,520.00 |
| 06/12/14 | CM-7900(51) | Shelby | | Various Locations Throughout Shelby County - Set 9 | CMAQ-M | CMAQ-2002-09 | | \$80,000.00 | \$18,406,327.00 |

| | | | | | | | | |
|---------------|---------------------|--------|-------|---|--------|-----------------|------------------------|-----------------|
| 06/12/14 | CM-NH-57(60) | Shelby | SR-57 | (Poplar St), Intersection at SR-205 (Collierville Arlington Rd), LM 21.40 - Set 2 | CMAQ-M | CMAQ-2002-09 | \$40,000.00 | \$18,406,327.00 |
| 06/17/14 | CM-7900(46) | Shelby | | Various Locations in Shelby County - Set 3 | CMAQ-M | CMAQ-2002-09 | \$50,000.00 | \$18,406,327.00 |
| 06/17/14 | CM-7900(44) | Shelby | | Various Locations in Shelby County - Set 1 | CMAQ-M | CMAQ-2002-09 | \$40,000.00 | \$18,406,327.00 |
| 06/17/14 | CM-7900(47) | Shelby | | Various Locations in Shelby County - Set 4 | CMAQ-M | CMAQ-2002-09 | \$60,000.00 | \$18,406,327.00 |
| 06/17/14 | CM-7900(45) | Shelby | | Various Locations in Shelby County - Set 2 | CMAQ-M | CMAQ-2002-09 | \$50,000.00 | \$18,406,327.00 |
| 06/27/14 | HSIP-R00S(42) | Shelby | | Castalia St at BNSF R/R, LM 0.47 in Memphis | HSIP | HSIP-2008-01 | \$43,200.00 | \$8,000,000.00 |
| 07/02/14 | HSIP-4188(10) | Shelby | | Old/New Brownsville Rd, From SR-15 (Stage Rd) to SR-14 (RSA) | HSIP | TN-HSIP-2014-01 | \$36,000.00 | \$3,000,000.00 |
| 07/10/14 | STP-H-14(53) | Shelby | SR-14 | (Austin Peay Hwy), From SR-204 to Tipton County Line (RSA) | STP | TN-STP-2014-01 | \$9,900.00 | \$3,000,000.00 |
| 07/11/14 | CM-098-4(13) | Shelby | | Memphis ITS (Utility, Power and Communication) | CMAQ | NHS-2002-03B | \$338,116.05 | \$600,000.00 |
| 07/21/14 | CM-NH-3(125) | Shelby | SR-3 | (US-51, Elvis Presley Blvd), From Holmes Rd to Brooks Rd - Set 6 | CMAQ-M | CMAQ-2002-09 | \$680,000.00 | \$18,406,327.00 |
| 07/22/14 | CM-7900(44) | Shelby | | Various Locations in Shelby County - Set 1 | CMAQ-M | CMAQ-2002-09 | \$935,000.00 | \$18,406,327.00 |
| 07/22/14 | CM-7900(43) | Shelby | | Various Locations in Shelby County, New Signals - Set 1 | CMAQ-M | CMAQ-2002-09 | \$667,000.00 | \$18,406,327.00 |
| 07/22/14 | CM-7900(45) | Shelby | | Various Locations in Shelby County - Set 2 | CMAQ-M | CMAQ-2002-09 | \$2,211,000.00 | \$18,406,327.00 |
| 07/25/14 | HSIP-2828(4) | Shelby | | Ridgeway Rd, From Mt. Moriah Rd to Quince Rd in Memphis (RSA) | HSIP | TN-HSIP-2014-01 | \$36,000.00 | \$3,000,000.00 |
| 08/05/14 | HSIP-2807(7) | Shelby | | South Parkway East, Intersection at Cummings St | HSIP | TN-HSIP-2014-01 | \$40,500.00 | \$3,000,000.00 |
| 08/07/14 | HSIP-57(64) | Shelby | SR-57 | (US-72), Intersection at Houston Levee Rd, LM 16.98 in Collierville | HSIP | TN-HSIP-2014-01 | \$36,000.00 | \$3,000,000.00 |
| 08/15/14 | SRTS-9409(113) | Shelby | | Highland Oaks Elementary School | SRTS | SRTS-2008-01 | (\$2,270.71) | \$441,083.00 |
| 08/18/14 | CM-7900(42) | Shelby | | Various Locations in Shelby County, Detection Upgrade - Set 3 | CMAQ | CMAQ-2002-09 | \$650,000.00 | \$18,406,327.00 |
| 08/18/14 | CM-7900(47) | Shelby | | Various Locations throughout Shelby County - Set 4 | CMAQ | CMAQ-2002-09 | \$250,000.00 | \$18,406,327.00 |
| 08/19/14 | CM-7900(46) | Shelby | | Various Locations in Shelby County - Set 3 | CMAQ-M | CMAQ-2002-09 | \$3,000,000.00 | \$18,406,327.00 |
| 08/25/14 | NH-098-4(16) | Shelby | | ITS Control Center for Memphis | IM | NHS-2002-03B | (\$33,306.38) | \$4,391,666.00 |
| 08/28/14 | CM-7900(50) | Shelby | | Various Locations Throughout Shelby County - Set 8 | CMAQ-M | CMAQ-2002-09 | \$1,720,000.00 | \$18,406,327.00 |
| 09/02/14 | HSIP-1450(5) | Shelby | | Holmes Rd, Intersection at Horn Lake Rd, LM 2.08 (RSA) | HSIP | TN-HSIP-2014-01 | \$36,000.00 | \$3,000,000.00 |
| 09/02/14 | HSIP-1(339) | Shelby | SR-1 | (US-51), From Poplar Ave to SR-14 in Memphis (RSA) | HSIP | TN-HSIP-2014-01 | \$36,000.00 | \$3,000,000.00 |
| 09/02/14 | HSIP-3(134) | Shelby | SR-3 | (US-51), Intersection at SR-23, LM 9.90 in Memphis (RSA) | HSIP | TN-HSIP-2014-01 | \$36,000.00 | \$3,000,000.00 |
| 09/02/14 | HSIP-R-5260(10) | Shelby | | Orchi Rd at CSX R/R, LM 0.14 in Memphis | HSIP | TN-HSIP-2014-01 | \$7,000.00 | \$3,000,000.00 |
| 09/04/14 | STP/HSIP-R-2807(9) | Shelby | | South Pkwy E at BNSF R/R, LM 3.84 in Memphis | HSIP | TN-HSIP-2014-01 | \$197,500.00 | \$3,000,000.00 |
| 09/04/14 | STP/HSIP-R-2841(10) | Shelby | | Channel Ave at BNSF R/R, LM 7.19 in Memphis | HSIP | TN-HSIP-2014-01 | \$66,500.00 | \$3,000,000.00 |
| 09/04/14 | STP/HSIP-R-2800(37) | Shelby | | Chelsea Ave at IC R/R, LM 4.17 in Memphis | HSIP | TN-HSIP-2014-01 | \$73,500.00 | \$3,000,000.00 |
| 09/08/14 | STP/HSIP-R-2865(3) | Shelby | | Pendleton St at BNSF R/R, LM 1.13 in Memphis | HSIP | TN-HSIP-2014-01 | \$141,500.00 | \$3,000,000.00 |
| 09/08/14 | HSIP-R00S(183) | Shelby | | A.W. Willis Ave at IC R/R, LM 0.032 in Memphis | HSIP | TN-HSIP-2014-01 | \$447,500.00 | \$3,000,000.00 |
| 09/11/14 | CM-7900(48) | Shelby | | Various Locations in Shelby County - Set 5 | CMAQ-M | CMAQ-2002-09 | \$2,500,000.00 | \$18,406,327.00 |
| TOTAL: | | | | | | | \$20,588,318.40 | |

ITS/SIGNAL/SAFETY & OTHER MITIGATION PROJECTS - MISSISSIPPI

| | | | | | | | | |
|---------------|------------------|--------|--|--|------|--|---------------------|--|
| 7/2/2014 | 106779-0211(056) | DeSoto | | MS 302 from US 61 to the Marshall/DeSoto CL - Intersection Improvements & Upgrades | HSIP | | \$193,500.00 | |
| 8/27/2014 | 106241-0211(055) | DeSoto | | MS 302 - Safety Corridor Study | HSIP | | (\$306.00) | |
| 9/9/2014 | 105249-0211(059) | DeSoto | | MS 302 & US 51 - Active Traffic Signal Mgt | CMAQ | | \$125,000.00 | |
| 9/9/2014 | 105249-9999(251) | DeSoto | | Intelligent Transportation System (ITS) Long Range Plan | CMAQ | | \$64,000.00 | |
| 9/9/2014 | 105249-0211(058) | DeSoto | | MS 302, StateLine Rd and Airways Blvd - Signal Corridor Timing | TAP | | \$175,000.00 | |
| TOTAL: | | | | | | | \$557,194.00 | |

BIKE/PED & OTHER ENHANCEMENT PROJECTS - TENNESSEE

| | | | | | | | | |
|---------------|--------------------|--------|------|--|--------------|----------------|-------------------------|----------------|
| 12/18/13 | STP-EN-9409(95) | Shelby | | Covington Pike/Warford St Median Landscaping | ENH | SSTPE-2006-003 | (\$66,225.00) | \$89,031.00 |
| 01/24/14 | TAP-M-9409(176) | Shelby | | Benjamin L. Hooks Central Library in Memphis | TAP | TAP-2014-01 | \$1,800.00 | \$2,890,761.00 |
| 01/24/14 | TAP-M-9409(177) | Shelby | | Ball Rd, From Perry Rd to Airways Blvd in Memphis | TAP | TAP-2014-01 | \$6,000.00 | \$2,890,761.00 |
| 01/24/14 | TAP-M-9409(178) | Shelby | | Mississippi Blvd, Intersections at South Pkwy, McLemore Ave and Walker Ave in Memphis | TAP | TAP-2014-01 | \$3,120.00 | \$2,890,761.00 |
| 01/24/14 | TAP-M-9409(179) | Shelby | | Range Line Rd, From St. Elmo Ave to Durham Dr in Memphis | TAP | TAP-2014-01 | \$4,200.00 | \$2,890,761.00 |
| 01/31/14 | STP-EN-9409(110) | Shelby | | I-40/Riverside Drive Gateway Enhancements | ENH | ENH-2008-01 | \$4,000.00 | \$107,000.00 |
| 03/24/14 | STP-M-9409(122) | Shelby | | Fletcher Creek Greenway - Phase 1 | STP-M | STP-M-2009-04 | \$148,988.00 | \$3,483,824.00 |
| 03/26/14 | STP-M-9409(146) | Shelby | | CSX Rails to Trails (Midtown to Shelby Farms Greenway) | STP-M | STP-M-2009-04 | (\$26,730.37) | \$3,483,824.00 |
| 03/31/14 | STP-EN-9409(79) | Shelby | | Memphis Parkway System Streetscape Improvements - Phase II | ENH | 99510 | (\$115,318.56) | N/A |
| 03/31/14 | STP-EN-7900(24) | Shelby | | Memphis Downtown Bike Rack Project | ENH | 99510 | (\$9,673.92) | N/A |
| 04/30/14 | STP-M-9409(185) | Shelby | | Chelsea Ave Greenline from Washington Park to North Evergreen St in Memphis | STP-M | STP-M-2009-04 | \$178,560.00 | \$3,483,824.00 |
| 04/30/14 | STP-M-2803(2) | Shelby | | Overton Park Trail along Poplar Ave; From North Cooper St to North Tucker St (Includes traffic signal upgrades at North Cooper St) | STP-M | STP-M-2009-04 | \$20,480.00 | \$3,483,824.00 |
| 05/08/14 | IM-55-1(130) | Shelby | I-55 | Welcome Center Building | IM | TN-IM-2010-01 | (\$1,700,000.00) | \$3,750,000.00 |
| 05/09/14 | STP-M-9409(122) | Shelby | | Fletcher Creek Greenway - Phase 1 | STP-M | STP-M-2009-04 | \$10,000.00 | \$3,483,824.00 |
| 05/16/14 | TCSP/STP-M-09TN(3) | Shelby | SR-3 | (US-51, Elvis Presley Blvd), From SR-175 (Shelby Dr) to I-55 in Memphis | STP-M | ENH-2010-01 | (\$440,000.00) | \$4,500,000.00 |
| 06/09/14 | DEM-R-9409(187) | Shelby | | University of Memphis Railroad Pedestrian Improvement Project | DEMO | 1499050 | \$50,000.00 | \$2,158,774.00 |
| 06/13/14 | STP-EN-9409(157) | Shelby | | Shelby Farms Phase II (Bicycle, Pedestrian and Equine Trails) | ENH | ENH-2011-01 | (\$50,000.00) | \$2,107,620.00 |
| 06/17/14 | STP-M-9409(123) | Shelby | | Burloe Pedestrian Bridge in Bartlett | STP-M | STP-M-2009-04 | (\$5,092.48) | \$4,892,850.00 |
| 06/19/14 | IM-55-1(130) | Shelby | I-55 | Welcome Center Building | IM | TN-IM-2010-01 | (\$124,570.00) | \$3,750,000.00 |
| 07/02/14 | STP-M-9409(189) | Shelby | | Shelby Farms Greenline Bridge, From Union Ave to Tillman St | STP-M | STP-M-2009-04 | \$240,000.00 | \$3,483,824.00 |
| 07/16/14 | DEM-R-9409(172) | Shelby | | Cobblestone Landing R/R Pedestrian Improvements | DEMO (TN056) | DEMO-2014-01 | \$50,000.00 | \$50,000.00 |
| 08/12/14 | STP-M-9409(167) | Shelby | | Various Locations in Memphis (Bicycle Program) | STP-M | STP-M-2009-04 | \$132,962.00 | \$3,483,824.00 |
| 09/02/14 | TCSP/STP-M-09TN(3) | Shelby | SR-3 | (US-51, Elvis Presley Blvd), From SR-175 (Shelby Dr) to I-55 in Memphis | STP-M | ENH-2010-01 | \$440,000.00 | \$4,500,000.00 |
| TOTAL: | | | | | | | (\$1,247,500.33) | |

| TRANSIT PROJECTS - MATA | | | | | | | | | |
|-------------------------|---------------|--------|--|--|--------------|--|-----------------|------------------------|--|
| 11/15/2013 | TN-95-X064 | Shelby | | Five Hybrid-Electric Buses | CMAQ | | \$2,315,276.00 | | |
| 4/2/2014 | TN-90-X357-02 | Shelby | | Preventive Maintenance, ADA Paratransit Service, Asso. Transit Improvements; Facility Improvements | Section 5307 | | \$11,647,696.00 | | |
| 5/28/2014 | TN-54-0004 | Shelby | | Fixed-Guideway Modernization Preventive Maintenance; Facility Improvements | Section 5337 | | \$1,204,843.00 | | |
| 8/19/2014 | TN-90-X357-03 | Shelby | | Jobs Access/Reverse Commute Funds | Section 5307 | | \$75,000.00 | | |
| 9/23/2014 | TN-95-X065 | Shelby | | Bicycle Racks for Fixed-Route Buses | TAP | | \$36,000.00 | | |
| TOTAL: | | | | | | | | \$15,278,815.00 | |

V. APPENDIX A - EXPLANATION OF FUNDING SOURCES

FUNDING SOURCES

This section provides the reader with a short description of the different funding sources referenced in the FY 2014 list of federally obligated projects.

FEDERAL HIGHWAY ADMINISTRATION (FHWA) FUNDS:

Bridge Replacement and Rehabilitation (BRR):

This funding program can be used for bridge replacement and repair on bridges determined to be structurally deficient, functionally obsolete, or in need of systematic preventative maintenance.

Congestion Mitigation Air Quality (CMAQ):

This funding program directs funds to projects and programs which reduce transportation emissions in air quality non-attainment or maintenance areas as determined by the Environmental Protection Agency. These funds are allocated to the state and to the local jurisdictions. Certain CMAQ projects are eligible for funding with 100 percent Federal funds. They include traffic control signalization projects, commuter carpooling and vanpooling activities or installation of traffic signs, traffic lights or priority control systems for emergency vehicles or transit vehicles at signalized intersections. State and local matches are required if CMAQ funds are used for mass transit projects or other air quality activities.

Demonstration Set Aside of STP Funds (DEMO):

This program provides special funding for certain projects. It is set aside funds, which are 100% federal or 80% federal and 20% state or local.

Highway Safety Improvement Program (HSIP):

This funding program directs funds to projects and programs which achieve a significant reduction in traffic fatalities and serious injuries on all public roads, including non-state-owned public roads and roads on tribal lands. The Highway Safety Improvement Program (HSIP) requires a data-driven, strategic approach to improving safety on all public roads that focuses on performance. Some examples of eligible uses of funds include intersection safety improvements, pavement and shoulder widening, pedestrian and bicycle safety improvements, and construction of traffic calming features.

Interstate Maintenance (IM):

The Interstate Maintenance (IM) program provides funding for resurfacing, restoring, rehabilitating and reconstructing (4R) most routes on the Interstate System. IM funds are a carry-over funding source from previous transportation bills.

National Corridor Planning and Development Program (NCPD)

The NCPD Program allocates funding to states and MPOs for coordinated planning, design, and construction of corridors of national significance.

V. APPENDIX A - EXPLANATION OF FUNDING SOURCES

National Highway Performance Program (NHPP):

The National Highway Performance Program (NHPP) provides support for the condition and performance of the National Highway System (NHS), for the construction of new facilities on the NHS, and to ensure that investments of Federal-aid funds in highway construction are directed to support progress toward the achievement of performance targets established in as State's asset management plan for the NHS. NHPP funds are a current federal funding source under MAP-21.

National Highway System (NHS):

The National Highway System (NHS) includes the Interstate Highway System as well as other roads important to the nation's economy, defense, and mobility. The NHS was developed by the Department of Transportation (DOT) in cooperation with the states, local officials, and metropolitan planning organizations (MPOs). NHS funds are a carry-over funding source from previous transportation bills.

Surface Transportation Program (STP):

This flexible funding source may be used by States and localities for projects to preserves and improve the conditions and performance on any Federal-aid highway, bridge, and tunnel projects on any public road, pedestrian and bicycle infrastructure, and transit capital projects, including intercity bus terminals. STP funds may be used to improve the design or operation of any road which is which is designated as an urban collector or higher on the State Functional Classification System. STP-S refers to projects programmed by one of the state agencies using the state's allocation of STP funds. STP-L refers to projects utilizing STP funds that are designated specifically for the local area. Any jurisdiction receiving STP funds must provide a match of at least 20 percent of the total project cost (exception: signalization projects are subject to 100% federal funds).

Transportation Alternatives Program (TAP):

MAP-21 establishes a new program to provide for a variety of alternative transportation projects, including many that were previously eligible activities under separately funded programs. The TAP replaces the funding from pre-MAP-21 programs including Transportation Enhancements, Recreational Trails, Safe Routes to School, and several other discretionary programs, wrapping them into a single funding source.

FEDERAL TRANSIT AUTHORITY (FTA) FUNDS:

Section 5307 Urbanized Area Formula Program:

These funds can be used for the following: 1) planning, engineering design and evaluation of transit projects and other technical transportation-related studies; 2) capital investments in bus and bus-related activities such as replacement of buses, overhaul of buses, rebuilding of buses, crime prevention and security equipment and construction of maintenance and passenger facilities; and 3) capital investments in new and existing fixed guideway systems including rolling stock, overhaul and rebuilding of vehicles, track, signals, communications, and computer hardware and software. MATA determines how these funds are programmed. These funds require a 20% match which are typically divided between state and local government, with each contributing 10%.

V. APPENDIX A - EXPLANATION OF FUNDING SOURCES

Section 5337 State of Good Repair Program:

These funds are directed to rail facilities and include preventative maintenance and improvements. MA-TA determines how these funds are programmed. These funds require a 20% match which are typically divided between state and local government, with each contributing 10%.

OTHER FUNDING SOURCES:

Transportation Enhancement Grant (ENH):

Specific activities which can be funded with Transportation Enhancement (ENH) funds; activities include pedestrian/bicycle facilities, acquisition of scenic easements and scenic historic sites, scenic or historic highway programs, scenic beautification, historic preservation, rehabilitation/operation of historic transportation structures, railway corridor preservation, control/removal of outdoor advertising, archeological planning/research and mitigation of highway runoff water pollution. ENH funds are a carry-over funding source from previous transportation bills.

Economic Stimulus (ES):

Projects identified through appropriation bills approved by Congress.

High Priority Project (HPP):

Projects using these funds were earmarked by the U.S. Congress as high priorities, at the federal level during the Congressional appropriations and re-authorization process. HPP funds are a carry-over funding source from previous transportation bills.

Safe Routes to Schools (SRTS):

This program seeks to enable and encourage children in kindergarten through eighth grades (K-8) to walk or bicycle to school, thereby promoting increased physical activity. The SRTS program is multi-faceted and requires that applicants address non-infrastructure activities before, during, and after infrastructure improvements have been made. Infrastructure projects include "traditional" items such as sidewalks, signs, signals, crossing improvements, etc. Non-infrastructure activities include education, encouragement, enforcement, and evaluation. SRTS funds are a carry-over funding source from previous transportation bills.