

List of 2012 Federally Obligated Projects

for the Memphis Urban Area Metropolitan Planning Organization

[Lista de Proyectos Federales 2012 Obligados por la MPO Area Urbana Memphis]





Memphis Urban Area Metropolitan Planning Organization
Department of Regional Services
125 North Main Street, Suite 450
Memphis, TN 38103
901.576.7190 (phone)
901.576.7272 (fax)
www.memphismpo.org

This document is available in accessible formats when requested five days in advance.

Este documento está disponible en formatos accesibles cuando se solicite con cinco días de antelación.

This document was prepared and published by the Memphis Metropolitan Planning Organization and is prepared in cooperation with or with financial assistance from all or several of the following public entities: the Federal Transit Administration, the Federal Highway Administration, the Tennessee and Mississippi Departments of Transportation, the Memphis Area Transit Authority, and the local governments in the MPO region. This financial assistance notwithstanding, the contents of this document do not necessarily reflect the official view or policies of the funding agencies.

It is the policy of the Memphis Urban Area Metropolitan Planning Organization (MPO) not to discriminate on the basis of age, sex, race, color, national origin or disability in its hiring or employment practices, or in its admission to or operations of its program, services, or activities. All inquiries for Title VI and/or the American Disabilities Act, contact Carlos McCloud at 901-576-7156 or carlos.mccloud@memphistn.gov.

TABLE OF CONTENTS

I. MPO OVERVIEW	
A. ACRONYMS.....	1
B. THE MEMPHIS URBAN AREA METROPOLITAN PLANNING ORGANIZATION.....	2
II. ABOUT THIS REPORT	
A. FEDERAL GUIDANCE.....	4
B. TRANSPORTATION IMPROVEMENT PROGRAM.....	5
III. SUMMARY OF 2012 OBLIGATED PROJECTS	
A. BY PROJECT TYPE.....	6
B. BY FUNDING TYPE.....	7
IV. LIST OF 2012 FEDERALLY OBLIGATED PROJECTS	
A. ABOUT THIS TABLE.....	9
B. ACRONYMS.....	9
V. <i>APPENDIX A</i> (EXPLANATION OF FUNDING SOURCES).....	14

I. MPO OVERVIEW

A. ACRONYMS

ETC	Memphis MPO Engineering and Technical Committee
FHWA	Federal Highway Administration
FTA	Federal Transit Administration
FY	Fiscal Year
ITS	Intelligent Transportation Systems
MAP-21	Moving Ahead for Progress in the 21st Century Act
MATA	Memphis Area Transit Authority
MDOT	Mississippi Department of Transportation
MPO	Metropolitan Planning Organization
SAFETEA-LU	Safe Accountable Flexible Efficient Transportation Equity Act: A Legacy for Users
STIP	Statewide Transportation Improvement Program
TDOT	Tennessee Department of Transportation
MDOT	Mississippi Department of Transportation
TIP	Transportation Improvement Program
Title VI	Title VI of the U.S. Civil Rights Act of 1964, as amended
TPB	Memphis MPO Transportation Policy Board

I. MPO OVERVIEW

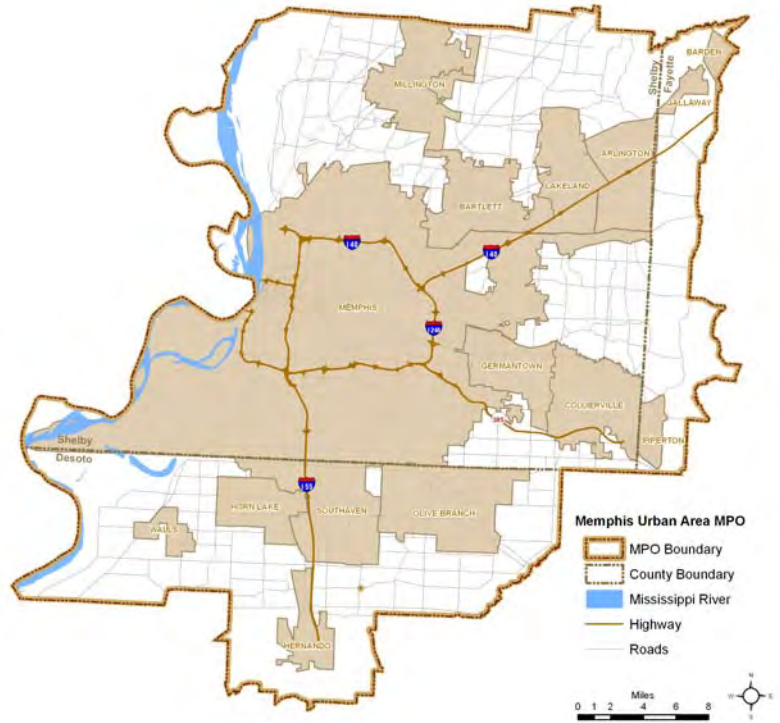
B. THE MEMPHIS URBAN AREA METROPOLITAN PLANNING ORGANIZATION

The Memphis Urban Area Metropolitan Planning Organization (MPO) was created in 1977 and has the lead responsibility to ensure that the transportation planning process is being carried out in accordance with federal and state regulations. Federal regulations require that an MPO be designated to carry out a comprehensive, continuing and coordinated transportation planning process for urbanized areas (as defined by the U.S. Bureau of Census) with a population of 50,000 or more.

The Memphis MPO is comprised of fifteen municipalities and three counties. The MPO boundary includes all of Shelby County and the four westernmost miles of Fayette County in Tennessee. The boundary also extends approximately ten miles south into DeSoto County, Mississippi (Figure 1).

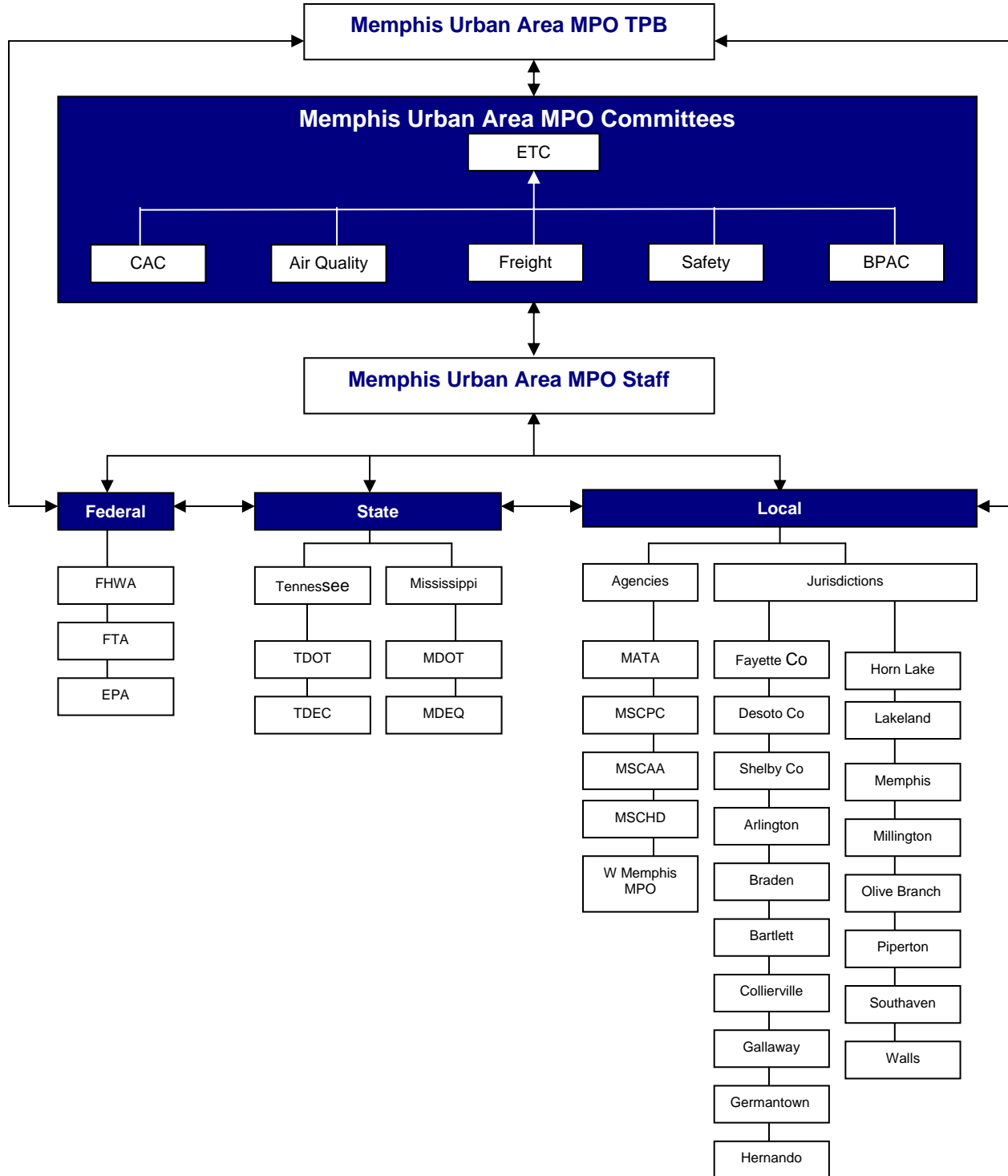
The Memphis and Shelby County Department of Regional Services (DRS) serves as staff for the Memphis MPO under the direction of the MPO's Transportation Policy Board (TPB). The organizational chart that follows shows the role of the different federal, state, regional and local agencies in the Memphis MPO's planning process (Figure 2).

Figure 1:
Memphis MPO Metropolitan Planning Area Boundary



I. MPO OVERVIEW

Figure 2: THE MEMPHIS URBAN AREA METROPOLITAN PLANNING ORGANIZATIONAL CHART



II. ABOUT THIS REPORT

A. FEDERAL GUIDANCE

As the designated metropolitan planning organization for the region, the MPO is required by Federal law to prepare a Transportation Improvement Program (TIP) to indicate how the Long Range Transportation Plan (LRTP) will be implemented. With the enactment of the current transportation bill, Moving Ahead for Progress in the 21st Century (MAP-21), the previous federal transportation legislation the Safe, Accountable, Flexible, Efficient Transportation Equity Act: A Legacy for Users (SAFETEA-LU), and the Federal Clean Air Act Amendment of 1990, the TIP is subject to provisions for project selection and funding. The TIP identifies projects programmed regionally for funding under several programs including Surface Transportation Program (STP), Interstate Maintenance (IM), National Highway System (NHS), Highway Safety Improvement Program (HSIP), Federal Transit Administration Section 5307, 5309, 5317 and 5339 Programs, Congestion Mitigation/Air Quality Program (CMAQ), and other federal transportation funding programs.

On August 10, 2005 President George Bush signed into law the Safe, Accountable, Flexible, Efficient, Transportation Equity Act: A Legacy for Users (SAFETEA-LU) which requires the MPOs to publish an annual listing of projects for which funds have been obligated in the preceding year as a record of project delivery and a progress report for public information and disclosure. SAFETEA-LU states:

...an Annual Listing of projects, including investments in pedestrian walkways and bicycle transportation facilities, for which Federal funds have been obligated in the preceding year shall be published or otherwise made available by the cooperative effort of the State, transit operator, and metropolitan planning organization for public review. The listing shall be consistent with the funding categories identified in each metropolitan transportation improvement program (TIP).¹

This provision still applies in the new transportation bill, MAP-21, which was signed into law by President Barack Obama on July 5, 2012. In addressing MAP-21 requirements, this report lists all transportation projects in the Memphis Area MPO's region that were obligated during Fiscal Year 2012 (October 1, 2011 - September 30, 2012).

The Federal Highway Administration (FHWA) defines obligation as the Federal government's legal commitment to pay or reimburse the States or other entities for the Federal share of a project's eligible costs.² An obligated project is one that has been authorized by the federal government and funds have been obligated or approved for reimbursement. For Federal Transit Administration (FTA) projects, obligation occurs when the FTA grant is awarded. For FHWA projects, an obligation takes place when a project agreement is executed and the State/grantee requests that the funds be obligated.

¹ Title 23 U.S.C. 134(j)(7)(B), 23 U.S.C. 135(g)(4)(B), 49 U.S.C. 5303(j)(7)(B), and 49 U.S.C. 5304(g)(4)(B)

² FTA/FHWA Preliminary Guidance on Annual Listing of Obligated Projects – February, 2006

II. ABOUT THIS REPORT

The projects listed in this report have been developed in accordance with FTA/FHWA preliminary guidance. The guidance establishes a framework for developing the information in a user friendly and accessible format. It is the primary responsibility of the MPO to prepare the list, and it is the MPO's Transportation Improvement Program (TIP) that serves as a basis for the information. However, the MPO's TIP identifies projects within the fiscal year that project implementation is anticipated rather than when the project received Federal authorization. Therefore, the obligated list of projects must be developed through a cooperative effort with state and public transportation operators responsible for tracking project authorizations and obligations.

B. TRANSPORTATION IMPROVEMENT PROGRAM

The TIP lists transportation projects over a four year period that will be funded, at least in part, with funds from the FHWA and/or the FTA. The TIP is the mechanism by which projects in the 2040 Long Range Transportation Plan (LRTP) get built. The TIP provides the opportunity to select projects to implement the transportation planning goals expressed in the MPO's adopted LRTP. In order for a project to be included in the TIP, it must be in one of the fiscally constrained LRTP project lists. The 2011-2014 TIP served as a 4-year financially feasible program of transportation improvements.

TIP projects are consistent with federal transportation regulations and accordingly, all TIP projects become part of TDOT's and MDOT's State Transportation Improvement program (STIP). These projects are financially constrained and implementable for each year. The current Memphis MPO TIP was adopted by the MPO's Transportation Policy Board (TPB) on September 23, 2010 and covers Fiscal Years 2011-2014. The TIP is amended periodically to include any projects approved by the TPB since its original date of adoption.

The content of the annual listing of projects is consistent with the project listing in the MPO's TIP. This includes project name and identification numbers, project location, project description, as well as the amount of funds programmed in the TIP. Fund obligations are a measure of the progress being made on a project. As such, the Annual Listing of Federally Obligated Projects Report is prepared at the end of the federal fiscal year to tell what actually happened with TIP federal project funding during the fiscal year.

Projects for which funds have been obligated are not necessarily initiated or completed in the program year, and the amount of the obligation will not necessarily equal the total cost of the project. It is possible that obligated funds exceed the amount estimated in the TIP. It is also possible that unused funds may be credited back when not needed at the completion of a project phase resulting in a deobligation.

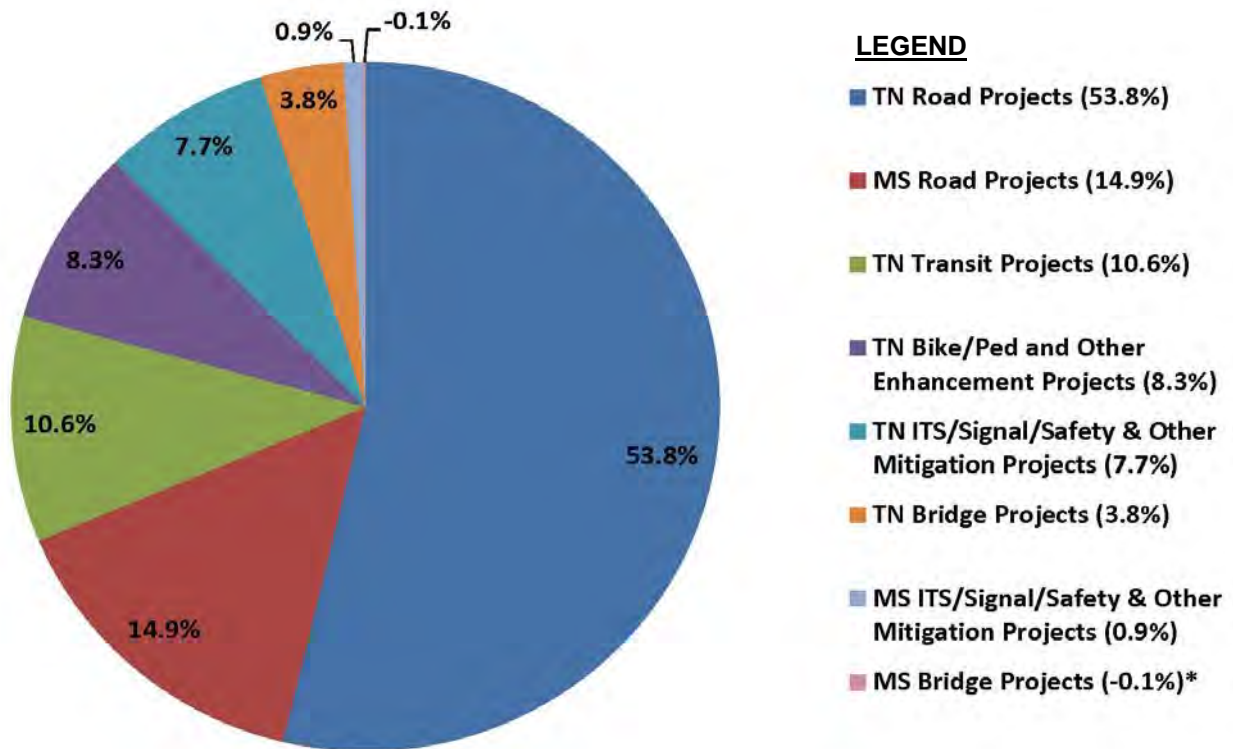
III. SUMMARY OF 2012 OBLIGATED PROJECTS

A. BY PROJECT TYPE

The MPO tracks the obligated funds for transportation projects within the Memphis MPO area. The total obligation for FY 2012 was \$154,251,604.89, with \$113,518,118.89 in Tennessee projects, \$24,314,104.00 in Mississippi projects, and \$16,419,382.00 in transit projects.

Table I below shows the breakdown in funding by project type. Roadway projects received the bulk of federal transportation monies in 2013, totaling \$105,994,932.60 or 68.7% with \$83,026,673.59 in Tennessee and \$22,968,259.00 in Mississippi. Roadway projects were followed by transit projects which totaled \$16,419,382. The next highest category for obligated funds in FY 2012 was bike and pedestrian projects as well as enhancement projects for Tennessee, totaling \$12,789,412.53. Other types of projects that received funding obligations in FY 2012 were Intelligent Transportation Systems (ITS), signalization, and other safety projects for a total of 9.2%, \$11,811,205.37 in Tennessee and \$1,465,373.00 in Mississippi. Bridge projects in Tennessee received \$5,890,827.40 in obligated funds, while bridge projects in Mississippi were deobligated funds for \$119,528.00, showing a negative percentage in the chart below. A complete list of all of the projects which received obligation and deobligation for FY 2012 is shown in **Table III** of this document.

TABLE I: Memphis MPO FY 2012 Obligated Funds By Project Type



* Note a negative percentage is shown due to federal funds being deobligated for FY 2012.

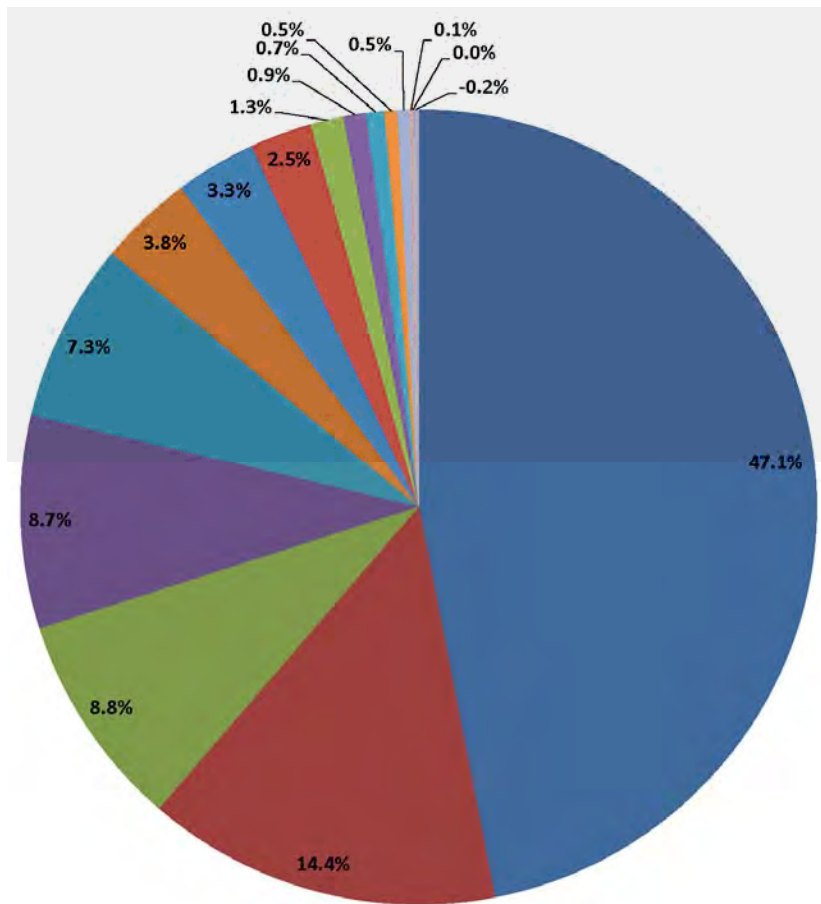
III. SUMMARY OF 2012 OBLIGATED PROJECTS

B. BY FUNDING TYPE

Table II on the next page shows the breakdown of the funding by the source of the federal funds. National Highway System (NHS) funds received the largest allotment of \$72,744,234.00 or 47.1% of the obligated funds for the Memphis MPO area. The second largest funding source was Surface Transportation Program (STP) funds totaling \$22,290,493.65 or 14.4% of the obligated funds for the area. Interstate Maintenance (IM), FTA Section 5307, and Bridge Replacement and Rehabilitation (BRR) received similar allotments with \$13,539,483.68, \$13,453,664.00, and \$11,321,149.40 respectively. Congestion Mitigation & Air Quality (CMAQ) and High Priority Project (HPP) were the next largest sources with \$5,898,610.00 and \$5,083,800.00. Earmark Funds received an allotment of \$3,900,150.00 and the Highway Safety Improvement Program (HSIP) received an allotment of \$2,079,439.77. The remaining eight funding sources each accounted for less than 1% of the total obligated funds for FY 2012. Those included FTA Section 5309, Transportation Enhancement Grant, FTA Section 5339, FTA Section 5317, Safe Routes to Schools (SRTS), American Recovery and Reinvestment (ARRA), Economic Stimulus (ES), and Emergency Relief (ER) funds. A complete list of all of the projects which received obligation/deobligation and the associated funding sources for FY 2012 are shown in **Table III** of this document.

III. SUMMARY OF 2012 OBLIGATED PROJECTS

TABLE II: Memphis MPO FY 2012 Obligated Funds By Funding Type



LEGEND

- NHS - National Highway System (47.1%)
- STP - Surface Transportation Program (14.4%)
- IM - Intersate Maintenance (8.8%)
- 5307 - FTA Urbanized Area Formula Program (8.7%)
- BRR - Bridge Replacement and Rehabilitation (7.3%)
- CMAQ - Congestion Mitigation & Air Quality (3.8%)
- HPP - High Priority Project (3.3%)
- Earmark Funds (2.5%)
- HSIP - Highway Safety Improvement Program (1.3%)
- 5309 - FTA Transit Capital Investment Program (0.9%)
- ENH - Transportation Enhancement Grant (0.7%)
- 5339 - FTA Alternative Analysis Program (0.5%)
- 5317 - FTA New Freedom Program (0.5%)
- SRTS - Safe Routes to Schools (0.1%)
- ARRA - American Recovery & Reinvestment Act (0.0%)
- ES - Economic Stimulus / ER - Emergency Relief & Other Deobligation (-0.2%)*

* Note a negative percentage is shown due to federal funds being deobligated for FY 2012.

IV. LIST OF 2012 FEDERALLY OBLIGATED PROJECTS

A. ABOUT THIS TABLE

Table III on the following pages lists the federally obligated/deobligated projects for fiscal year 2012. Along with the project description other information includes the location by county, TIP number, state project number, type of project, funding type, amount of federal funds obligated, the amount listed in the TIP and the date the funds were made available. Federally funds shown in red are deobligations and are deducted from the total obligated funds for fiscal year 2012.

B. ACRONYMS

Acronyms were used for the funding types to consolidate the text within **Table III**. Following is an explanation of the acronyms:

FUNDING TYPES*

ARRA	American Recovery and Reinvestment Act
BRR	Bridge Replacement and Rehabilitation
CMAQ	Congestion Mitigation & Air Quality
ENH	Transportation Enhancement Grant
ER	Emergency Relief
ES	Economic Stimulus
HPP	High Priority Project
HSIP	Highway Safety Improvement Program
IM	Interstate Maintenance
NHS	National Highway System
SRTS	Safe Routes to Schools
STP	Surface Transportation Program
5307	FTA Urbanized Area Formula Program
5309	FTA Transit Capital Investment Program
5317	FTA New Freedom Program
5339	FTA Alternative Analysis Program

* For a more detailed description of these funding sources please see **Appendix A**

TABLE III: LIST OF 2012 FEDERALLY OBLIGATED PROJECTS

DATE	PROJECT NUMBER	COUNTY	ROUTE	DESCRIPTION	FUNDING TYPE	TIP/STIP NUMBER	FEDERAL FUNDS OBLIGATED	TOTAL COST IN TIP
ROADWAY PROJECTS - TENNESSEE								
10/01/11	STP-M-9409(155)	Shelby		Veterans Pkwy West, From Dakar St to Creek Mill Cove and West Union	STP-M	STP-M-2008-02	\$3,157,200.00	\$3,946,500.00
10/01/11	STP-M-9411(10)	Shelby		Veterans Pkwy South (West Union Extended), From Navy Rd to Raleigh-Millington Rd	STP-M	STP-M-2006-06	\$427,600.00	\$534,500.00
10/11/11	STP-M-9419(7)	Shelby		Various Streets in Bartlett	STP-M	STP-M-2009-03	\$869,190.00	\$3,110,000.00
10/27/11	STP-385(24)	Fayette, Shelby	SR-385	From SR-86 (US-72) in Collierville to N of SR-57 in Fayette County	STP	TN-STP-S-2011-01	(\$76,350.77)	\$500,000.00
10/28/11	IME-40-1(335)	Shelby	I-40	From End of Mississippi River Bridge to I-240 Ramp	IM	TN-IM-2011-04	\$75,739.00	\$3,357,000.00
11/01/11	IME-55-1(127)	Shelby	I-55	From I-240 to N of Horn Lake Rd	IM	TN-IM-2011-04	\$2,493,900.00	\$3,357,000.00
11/01/11	IME-240-1(291)	Shelby	I-240	From I-55 Ramp to E of SR-3 (US-51)	IM	TN-IM-2011-04	\$518,400.00	\$3,357,000.00
11/04/11	NHE-86(4)	Shelby	SR-86	(US-72), From N of Quinn Rd to SR-57 (Poplar Ave) in Collierville	NHS	TN-ES-S-2009-01	\$2,355,130.00	\$19,100,099.00
11/22/11	STP-15(152)	Shelby	SR-15	From Alfaree St to Bartlett Rd	STP	TN-STP-S-2011-04	(\$341,447.18)	\$50,000.00
12/12/11	STP-M-9409(99)	Shelby		Holmes Rd, From Malone Rd to SR-4 (US-78, Lamar Ave) in Memphis	STP-M	STP-M-2006-09	\$1,600,000.00	\$2,000,000.00
12/19/11	NC-I-269(15)	Shelby	SR-385	(Paul Barrett Pkwy), From N of SR-193 (Macon Rd) to SR-205 (Collierville-Arlington Rd), S of SR-15/US-64 (Future I-269)	HPP	NHS-2008-05	(\$800,000.00)	\$20,000,000.00
12/29/11	IME-240-1(291)	Shelby	I-240	From I-55 Ramp to E of SR-3 (US-51)	IM	TN-IM-2011-04	\$78,056.00	\$100,000.00
01/04/12	STP-M-9417(8)	Shelby		Winchester Rd, From Bailey Station to Byhalia Rd in Collierville	STP-M	STP-M-2009-03	\$81,609.00	\$3,212,011.00
01/04/12	IM-40-1(314)	Shelby	I-40	From E of Canada Rd to SR-205 (Collierville-Arlington Rd)	IM	NHS-2006-10-B	\$900,000.00	\$1,000,000.00
01/11/12	IM-40-1(314)	Shelby	I-40	From E of Canada Rd to SR-205 (Collierville-Arlington Rd)	IM	NHS-2006-10-B	\$104,850.00	\$250,000.00
01/12/12	STP-M-5161(2)	Shelby		Farmington Blvd, From Allenby Ct to Germantown Rd in Germantown	STP-M	STP-M-2009-03	\$2,340,000.00	\$3,212,011.00
01/12/12	STP-EN-9409(74)	Shelby		Central Ave, From Deloach St to Zach Curlin St in Memphis	ENH	SSTPE-2002-005	\$1,083,365.00	\$1,354,206.00
01/27/12	STP/HSIP-NHE-3(122)	Shelby	SR-3	(US-51), From Loosahatchie River to SR-385	STP	TN-STP-S-2011-04	\$2,252,800.00	\$11,402,500.00
01/27/12	STP/HSIP-NHE-3(122)	Shelby	SR-3	(US-51), From Loosahatchie River to SR-385	HSIP	TN-HSIP-2011-01	\$122,800.00	\$2,000,000.00
02/13/12	IM/HPP/NH-55-1(122)	Shelby	I-55	Interchange at Mallory Ave, LM 8.92 in Memphis	NHS	TN-NHS-2011-02	\$876,800.00	\$500,000.00
02/15/12	STP/HSIP-15(166)	Shelby	SR-15	(US-64), From Fletcher Creek to Fletcher Trace Pkwy	STP	TN-STP-S-2011-04	\$154,400.00	\$11,402,500.00
02/15/12	STP/HSIP-15(166)	Shelby	SR-15	(US-64), From Fletcher Creek to Fletcher Trace Pkwy	HSIP	TN-HSIP-2011-01	\$142,200.00	\$2,000,000.00
02/16/12	IM-40-1(290)2	Shelby	I-40	Midtown Interchange, from Ayers St to Vollintine Ave (Phase 1)	IM	TN-IM-2011-02	\$133,200.00	\$200,000.00
02/21/12	NHE-86(4)	Shelby	SR-86	(US-72), From N of Quinn Rd to SR-57 (Poplar Ave) in Collierville	NHS	TN-ES-S-2009-01	\$2,338,600.00	\$3,300,000.00
02/23/12	STP-M-9409(155)	Shelby		Veterans Pkwy West, From Dakar St to Creek Mill Cove and West Union	STP-M	STP-M-2008-02	(\$530,000.00)	\$3,946,500.00
02/24/12	STP-M-9409(118)	Shelby		Veterans Pkwy West, From Dakar St to Creek Mill Cove and West Union	STP-M	STP-M-2008-02	\$530,000.00	\$3,946,500.00
02/29/12	IME-240-1(291)	Shelby	I-240	From I-55 Ramp to E of SR-3 (US-51)	IM	TN-IM-2011-04	\$16,476.00	\$3,258,021.00
03/06/12	ARRA-STP-M-811(112)	Shelby		Houston Levee Rd, From Bailey Station Rd to Winchester Rd in Collierville	ES	TN-ES-L-2009-01	(\$93,185.13)	\$23,472,119.00
03/12/12	STP/HSIP-NHE-385(28)	Shelby	SR-385	From SR-14 Ramp to SR-3 (US-51)	HSIP	TN-HSIP-2011-01	\$220,500.00	\$2,000,000.00
03/12/12	STP/HSIP-NHE-385(28)	Shelby	SR-385	From SR-14 Ramp to SR-3 (US-51)	STP	TN-STP-S-2011-04	\$1,256,000.00	\$11,402,500.00
03/16/12	STP-M-5161(2)	Shelby		Farmington Blvd, From Allenby Ct to Germantown Rd in Germantown	STP-M	STP-M-2011-03	\$344,946.00	\$781,250.00
03/16/12	IM-40-1(303)	Shelby	I-40	From SR-177 (Germantown Rd) to E of Canada Rd	IM	NHS-2006-10-A	\$427,500.00	\$1,825,000.00
03/22/12	STP-M-175(19)	Shelby	SR-175	(Byhalia Rd), From N of Holmes Rd to N of Winding Ridge Rd in Collierville	STP-M	STP-M-2009-03	(\$153,659.00)	\$3,212,011.00
04/02/12	STP-385(25)	Shelby	SR-385	From SR-205 (S of SR-15/US-64) to I-40	STP	TN-STP-S-2011-01	(\$693,051.20)	\$500,000.00
04/10/12	STP/HSIP-NHE-3(122)	Shelby	SR-3	(US-51), From Loosahatchie River to SR-385	STP	TN-STP-S-2011-04	\$136,296.00	\$11,402,500.00
04/10/12	STP/HSIP-NHE-3(122)	Shelby	SR-3	(US-51), From Loosahatchie River to SR-385	HSIP	TN-HSIP-2011-01	(\$15,219.00)	\$2,000,000.00
04/18/12	STP-M-9417(5)	Shelby		Various Locations in Collierville	STP-M	STP-M-2009-05	(\$10,000.00)	\$410,000.00
04/25/12	STP-M-9409(139)	Shelby		Various Roads in Shelby County	STP-M	STP-M-2011-04	(\$325,271.83)	\$781,250.00
05/14/12	STP-NHE-3(103)	Shelby	SR-3	(US-51), From First St to N of Cuba-Millington Rd	STP	TN-STP-S-2011-04	\$27,665.52	\$11,402,500.00
05/14/12	STP-NHE-3(102)	Shelby	SR-3	(US-51), Intersection at N. Watkins	STP	TN-STP-S-2011-04	\$13,706.90	\$11,402,500.00
05/15/12	STP-M-7900(29)	Shelby		Fite Rd, From SR-3 (US-51) to Woodstock Rd in Memphis	STP-M	STP-M-2002-07	\$140,000.00	\$175,000.00
05/15/12	STP-175(15)	Shelby	SR-175	From JCT SR-176 to JCT SR-4	STP	TN-STP-S-2011-04	(\$4,248.40)	\$11,402,500.00
05/23/12	STP-M-NHE-57(47)	Shelby	SR-57, SR-177	SR-57 (Poplar Ave) and SR-177 (Germantown Rd) in Germantown	STP-M	STP-M-2011-04	(\$61,804.00)	\$781,250.00
05/30/12	STP/HSIP-NHE-385(28)	Shelby	SR-385	From SR-14 Ramp to SR-3 (US-51)	STP	TN-STP-S-2011-04	\$85,270.00	\$11,402,500.00
05/31/12	IM-40-1(290)2	Shelby	I-40	Midtown Interchange, from Ayers St to Vollintine Ave (Phase 1)	IM	TN-IM-2011-02	(\$334.72)	\$1,120,000.00
06/06/12	STP-M-205(21)	Shelby	SR-205	(Airline Rd), Intersection at Douglas St in Arlington	STP-M	STP-M-2011-05	\$16,000.00	\$120,000.00
06/06/12	STP-M-803(5)	Shelby		Church St, Intersection at Navy Rd in Millington	STP-M	STP-M-2009-09	\$12,000.00	\$420,000.00
06/06/12	STP-M-9409(121)	Shelby		Milton Wilson Road South, from Airline Rd to Chester St	STP-M	STP-M-2011-04	\$151,191.00	\$781,250.00
06/21/12	STP-M-803(5)	Shelby		Church St, Intersection at Navy Rd in Millington	STP-M	STP-M-2009-09	\$114,480.00	\$420,000.00
06/22/12	NH-I-269(19)	Shelby, Fayette	I-269PROP	From SR-57 (Poplar Ave) in Fayette County to SR-193 (Macon Rd) in Shelby County	NHS	NHS-2012-01	\$19,851,634.00	\$25,000,000.00
07/16/12	IM-40-1(316)	Shelby	I-40	Interchange at Canada Rd	IM	NHS-2002-04	\$568,310.00	\$1,200,000.00
07/17/12	STP-14(49)	Shelby	SR-14	From W of Manassas St to W of Breedlove St	STP	TN-STP-S-2011-01	\$25,553.23	\$500,000.00
07/17/12	STP-M-9409(78)	Shelby		New Riverdale Rd, From SR-57 (Poplar Ave) to Neshoba Rd in Germantown	STP-M	STP-M-2011-04	\$327,499.50	\$781,250.00
07/25/12	STP-M-9409(139)	Shelby		Various Roads in Shelby County	STP-M	STP-M-2011-04	(\$2,757.58)	\$781,250.00
07/25/12	STP-M-205(21)	Shelby	SR-205	(Airline Rd), Intersection at Douglas St in Arlington	STP-M	STP-M-2011-05	\$7,200.00	\$120,000.00
07/25/12	STP-M-9409(109)	Shelby		Kirby Whitten Pkwy, From E of the Wolf River to Macon Rd	STP-M	STP-M-2006-10	\$640,000.00	\$3,120,900.00
07/25/12	STP-3(108)	Shelby	SR-3	(US-51), From South Pkwy to Heistan Place	STP	TN-STP-S-2011-01	(\$554.96)	\$500,000.00
07/27/12	NH-I-269(23)	Fayette, Shelby	I-269PROP	From the Mississippi State Line to SR-385, S of Collierville	NHS	NHS-2006-06	\$33,870,118.00	\$44,000,000.00
08/09/12	STP-385(21)	Shelby, Fayette	SR-385	(Paul Barret Pkwy), From N of SR-193 (Macon Rd) to SR-205 (Collierville-Arlington Rd), S of SR-15/US-64	STP	TN-STP-S-2011-01	(\$85,617.91)	\$500,000.00
08/13/12	IME-240-1(292)	Shelby	I-240	From E of I-55 to E of Perkins Rd	IM	TN-IM-2011-04	\$5,218,200.00	\$9,258,021.00
08/21/12	STP-M-9409(114)	Shelby		Walnut Grove Rd - Middle; Kirby Whitten Pkwy/Walnut Grove Interchange to Germantown Pkwy	STP-M	STP-M-2000-11	(\$358,400.00)	\$200,000.00

DATE	PROJECT NUMBER	COUNTY	ROUTE	DESCRIPTION	FUNDING TYPE	TIP/STIP NUMBER	FEDERAL FUNDS OBLIGATED	TOTAL COST IN TIP
08/29/12	NC-I-269(15)	Shelby	SR-385	(Paul Barrett Pkwy), From N of SR-193 (Macon Rd) to SR-205 (Collierville-Arlington Rd), S of SR-15/US-64 (Future I-269)	HPP	NHS-2008-05	(\$48,000.00)	\$20,000,000.00
08/31/12	IME-55-1(123)	Shelby	I-55	From the Mississippi State Line to Nonconnah Creek	IM	TN-IM-2011-04	(\$175,523.40)	\$9,258,021.00
09/06/12	MAF-57(9)	Shelby	SR-57	(Nonconnah Pkwy), From I-240 to E of Hickory Hill Rd		N/A	(\$68,150.48)	N/A
09/14/12	NH/HPP-I-40-1(294)	Shelby	I-40	Interchange at I-240 East in Memphis (Phase 2)	NHS	TN-NHS-2011-02	\$430,508.00	\$500,000.00
09/14/12	NHE-86(3)	Shelby	SR-86	(US-72), From S of SR-175 (Shelby Dr) to N of SR-385	NHS	TN-NHS-2011-02	\$333,356.00	\$500,000.00
TOTAL:							\$83,026,673.59	

ROADWAY PROJECTS - MISSISSIPPI

11/04/11	100222/554096	Desoto	I-55	I-55 from Church Rd to SR-302 - Widen 6 lanes	Earmark		\$240,000.00	
11/04/11	100222/554096	Desoto	I-55	I-55 from Church Rd to SR-302 - Widen 6 lanes	Earmark		\$2,000,000.00	
11/09/11	501561/290100	Desoto, Marshall	I-269	Bond Project for I-269/MS 304 from I-55 to TN SL per MOU	STP		\$3,337,293.00	
11/09/11	501561/290100	Desoto, Marshall	I-269	Bond Project for I-269/MS 304 from I-55 to TN SL per MOU	NHS		\$6,409,835.00	
11/09/11	501561/290100	Desoto, Marshall	I-269	Bond Project for I-269/MS 304 from I-55 to TN SL per MOU	Earmark		\$487,158.00	
11/16/11	105285LPA/7887001	Desoto		Traffic signal installation & intersection improvements @ Byhalia & McIngvale Rd. City of Hernando	STP		(\$2,878.00)	
01/12/12	102556/292012	Desoto, Marshall	I-269	SR 304/I-269 from I-55 to Tennessee SL (incl interchange PE for design of new constructions)	STP		\$164,996.00	
01/19/12	105791/554070	Desoto, Tate	I-55	I-55 from the Panola CL to 2.421 miles N. of Tate/DeSoto CL. Re-establish clear zone & Med. Barrier	NHS		\$612,506.00	
01/19/12	105791/554070	Desoto, Tate	I-55	I-55 from the Panola CL to 2.421 miles N. of Tate/DeSoto CL. Re-establish clear zone & Med. Barrier	Earmark		(\$612,632.00)	
01/19/12	100222/554096	Desoto	I-55	I-55 from Church Rd to SR-302 - Widen 6 lanes	Earmark		\$960,000.00	
01/27/12	104795LPA/7905001	Desoto		City of Olive Branch - Alexander Rd from Goodman Rd to N of SR 302 - Widen from 2 to 4 lanes, curb, gutter, sidewalk	STP		(\$76,724.00)	
02/23/12	101427-302/312004	Desoto	SR-305	SR 305 from Church Rd to US 78. Construct 5 lanes	CMAQ		(\$131,000.00)	
04/25/12	102556/292012	Desoto, Marshall	I-269	SR 304/I-269 from I-55 to Tennessee SL (incl interchange PE for design of new constructions)	STP		\$601,809.00	
05/17/12	106364/096016	Desoto	Hwy 61	Hwy 61 - Beginning .1 mile South of SR 3 and going North approx 10 miles to MS/TN SL Overlay. Pavement Rehab	NHS		\$4,480,000.00	
06/06/12	501561/290100	Desoto, Marshall	I-269	Bond Project for I-269/MS 304 from I-55 to TN SL per MOU	STP		\$3,907,702.00	
06/11/12	102556/292011	Desoto	I-269	SR 304/I-269 from east of i-55 to TN SL. PE for archaeological investigation (28.6 miles)	CMAQ		\$77,680.00	
07/11/12	106364/096016	Desoto	Hwy 61	Hwy 61 - Beginning .1 mile South of SR 3 and going North approx 10 miles to MS/TN SL Overlay. Pavement Rehab	NHS		(\$273,040.00)	
08/23/12	105313LPA/906005	Desoto		Star Landing Rd from approx Tulane Rd to Getwell Rd - PE Environmental	Earmark		\$500,000.00	
09/19/12	105313LPA/906005	Desoto		Star Landing Rd from approx Tulane Rd to Getwell Rd - PE Environmental	Earmark		\$325,624.00	
09/27/12	105678ARRALPA/211105	Desoto		Construct sidewalk along Goodman Rd from Horn Lake Rd to Hurt Rd and pave Tulane Rd from Nail Rd to Goodman Rd	ARRA		(\$16,662.00)	
09/27/12	105651ARRALPA/7862003	Desoto		Widen Stateline Rd from 2 to 3 lanes between Alexander Rd and Hacks Cross Rd	ARRA		(\$23,408.00)	
TOTAL:							\$22,968,259.00	

BRIDGE PROJECTS - TENNESSEE

11/01/11	CM-57(52)	Fayette	SR-57	Bridge over Norfolk Southern R/R (MRIMF)	CMAQ	TN-CMAQ-2011-02	\$229,791.00	\$14,200,000.00
01/17/12	STP-M-9419(6)	Shelby		Bartlett Rd, Bridge over Harrington Creek, LM 0.07 in Bartlett	STP-M	STP-M-2009-03	\$8,000.00	\$3,212,011.00
02/22/12	IM-40-1(313)	Shelby	I-40	Bridge over Mississippi River (Seismic Retrofit Phase 7)	IM	TN-IM-2011-02	\$1,536,300.00	\$1,120,000.00
02/27/12	IM-40-1(333)	Shelby	I-40	Bridge over Mississippi River (Seismic Retrofit Phase 9)	IM	NHS-2008-19	(\$4,931,556.00)	\$36,400,000.00
04/03/12	BR-STP-2861(1)	Shelby		McLemore Ave, Bridge over ICG R/R, LM 9.06 in Memphis	BRR-L	BRR-L-2011-02	(\$15,271.14)	\$10,000.00
04/24/12	STP-M-9419(8)	Shelby		Old Brownsville Rd, Bridge over Buckhead Creek/Franks Branch in Bartlett	STP-M	STP-M-2009-03	\$8,400.00	\$3,212,011.00
05/04/12	BR-STP-14(37)	Shelby	SR-14	(US-61), South Parkway to McLemore Ave (Ravine, LM 9.51 & I.C. R/R, LM 9.68) in Memphis	BRR-S	TN-BRR-S-2011-01	\$10,069,600.00	\$16,000,000.00
05/11/12	BSRF-I-40-1(282)0	Shelby	I-40	Bridge over Mississippi River (Phase 3)	BRR-S	TN-BRR-S-2011-02	(\$34,321.91)	\$50,000.00
05/29/12	BHI/BSRF/IMD-40-1(278)0	Shelby	I-40	Bridge over Mississippi River, Phase 2	BRR-S	TN-BRR-S-2011-02	(\$679,285.06)	\$50,000.00
05/30/12	BR-STP-175(11)	Shelby	SR-175	Bridge over Horn Lake Creek, LM 0.23	BRR-S	TN-BRR-S-2011-02	(\$276,765.85)	\$50,000.00
06/06/12	STP-M-205(20)	Shelby	SR-205	(Airline Rd), Bridge over Hall Creek in Arlington	STP-M	STP-M-2011-01	\$35,520.00	\$152,100.00
07/16/12	BRZE-9409(70)	Shelby		South Pkwy, Bridge over ICG R/R, LM 1.00 in Memphis	BRR-L	BRR-L-2011-02	\$10,416.36	\$20,000.00
09/25/12	BR-STP-2807(5)	Shelby		South Parkway, Bridge over ICG R/R, LM 1.00 in Memphis	BRR-S	TN-BRR-S-2011-02	(\$70,000.00)	\$50,000.00
TOTAL:							\$5,890,827.40	

BRIDGE PROJECTS - MISSISSIPPI

08/16/12	103318/311015	Desoto	SR-305	SR 305 from Cockrum to Lewisburg. PE for 4 bridge replacements	BRR		(\$89,000.00)	
08/16/12	103318/311015	Desoto	SR-305	SR 305 from Cockrum to Lewisburg. PE for 4 bridge replacements	BRR		(\$30,528.00)	
TOTAL:							(\$119,528.00)	

ITS/SIGNAL/SAFETY & OTHER MITIGATION PROJECTS - TENNESSEE

10/04/11	CM-9409(160)	Shelby		Various Locations throughout Shelby County	CMAQ-M	CMAQ-2002-09	\$1,525,601.00	\$7,624,841.00
10/13/11	NH-098-4(16)	Shelby		ITS Control Center for Memphis	NHS	NHS-2002-03B	\$986,666.00	\$1,233,333.00
11/09/11	HSIP-NHE-3(116)	Shelby	SR-3	(N. Third St), Intersection at Mills Ave in Memphis	HSIP	TN-HSIP-2011-01	\$4,500.00	\$2,000,000.00
11/10/11	HSIP-2823(5)	Shelby		New Allen Rd, Intersection at Hawkins Mill Rd in Memphis	HSIP	TN-HSIP-2011-01	\$18,000.00	\$2,000,000.00

DATE	PROJECT NUMBER	COUNTY	ROUTE	DESCRIPTION	FUNDING TYPE	TIP/STIP NUMBER	FEDERAL FUNDS OBLIGATED	TOTAL COST IN TIP
11/16/11	CM-9409(119)	Shelby		Shelby County Diesel Retrofit - Mountain State Contractors	CMAQ-S	CMAQ-2008-10	(\$56,568.00)	\$70,710.00
11/22/11	HSIP-1(217)	Shelby	SR-1	(US-64, Danny Thomas Blvd), Intersection at Georgia Ave, LM 1.46 in Memphis	HSIP	TN-HSIP-2011-01	(\$35,075.43)	\$2,000,000.00
12/07/11	STP-H-NHE-3(86)	Shelby	SR-3	(US-51), Intersection at Shelby Rd/Easley St in Millington	STP	TN-STP-S-2011-03	(\$3,977.11)	\$100,000.00
12/22/11	HSIP-2807(6)	Shelby		South Parkway East, Intersection at College St in Memphis	HSIP	TN-HSIP-2011-01	\$118,430.00	\$2,000,000.00
01/06/12	CM-STP-9409(82)	Shelby		Vehicle Inspection Station in Memphis	CMAQ-M	CMAQ-2002-14	\$3,640,000.00	\$4,550,000.00
02/08/12	HSIP-2807(8)	Shelby		South Parkway East, Intersection at Cummings St	HSIP	TN-HSIP-2011-01	\$18,000.00	\$2,000,000.00
03/26/12	IM/NH-098-4(17)	Shelby		Memphis ITS System Maintenance (July 2012 - December 2014)	NHS	NHS-2002-03B	\$128,128.00	\$700,000.00
03/26/12	IM/NH-098-4(17)	Shelby		Memphis ITS System Maintenance (July 2012 - December 2014)	IM	NHS-2002-03B	\$1,821,006.00	\$2,940,000.00
04/18/12	HSIP-803(4)	Shelby		Raleigh Millington Rd, Intersection at New Allen Rd in Memphis	HSIP	TN-HSIP-2011-01	\$9,000.00	\$2,000,000.00
05/07/12	HSIP-NHE-3(116)	Shelby	SR-3	(N. Third St), Intersection at Mills Ave in Memphis	HSIP	TN-HSIP-2011-01	\$65,160.00	\$2,000,000.00
05/09/12	HSIP-5135(10)	Shelby		Appling Rd, Intersections at I-40 E and W Ramps in Memphis	HSIP	TN-HSIP-2011-01	\$679,500.00	\$2,000,000.00
05/11/12	IME-098-4(7)	Shelby		Memphis ITS System (Utility, Power and Communication)	IM	TN-IM-2011-02	\$62,475.79	\$1,120,000.00
05/14/12	IM-098-4(10)	Shelby		Memphis Regional Transportation Management Center (RTMC) - Memphis ITS	IM	TN-IM-2011-02	(\$13,554.99)	\$1,120,000.00
05/14/12	HSIP-NHE-57(41)	Shelby	SR-57	(US-72, Poplar Ave), Intersection at June Rd, LM 7.63 in Memphis	HSIP	TN-HSIP-2011-01	(\$956,223.26)	\$2,000,000.00
05/17/12	CM-9409(160)	Shelby		Various Locations throughout Shelby County	CMAQ-M	CMAQ-2002-09	\$1,017,068.00	\$7,624,841.00
05/30/12	STP/HSIP-NHE-385(28)	Shelby	SR-385	From SR-14 Ramp to SR-3 (US-51)	HSIP	TN-HSIP-2011-01	\$3,191.00	\$2,000,000.00
06/04/12	IM/NH-098-4(17)	Shelby		Memphis ITS System Maintenance (July 2012 - December 2014)	NHS	NHS-2002-03B	\$90,025.00	\$700,000.00
06/04/12	IM/NH-098-4(17)	Shelby		Memphis ITS System Maintenance (July 2012 - December 2014)	IM	NHS-2002-03B	(\$101,486.00)	\$2,940,000.00
06/20/12	HSIP-2874(1)	Shelby		St. Elmo Ave, Intersection at Mountain Terrace St in Memphis	HSIP	TN-HSIP-2011-01	\$117,230.00	\$2,000,000.00
06/25/12	IM/NH-40-1(336)	Shelby, Fayette	I-40	From SR-177 (Germantown Rd) to Braden Rd Overpass (Memphis SmartWay ITS)	IM	TN-CMAQ-2011-01	\$2,156,929.00	\$2,750,000.00
06/25/12	IM/NH-40-1(336)	Shelby, Fayette	I-40	From SR-177 (Germantown Rd) to Braden Rd Overpass (Memphis SmartWay ITS)	NHS	TN-CMAQ-2011-01	\$262,086.00	\$475,000.00
06/29/12	ER-STP-I-098-4(15)	Shelby		Damage to Existing ITS Field Equipment	ER	N/A	(\$169,628.00)	N/A
06/29/12	HSIP-R-205(18)	Shelby	SR-205	Navy Rd at ICR, LM 22.65 in Millington	HSIP	TN-HSIP-2011-01	(\$33,192.54)	\$2,000,000.00
07/06/12	HSIP-5135(10)	Shelby		Appling Rd, Intersections at I-40 E and W Ramps in Memphis	HSIP	TN-HSIP-2011-01	(\$31,997.00)	\$2,000,000.00
07/12/12	STP-M-9409(151)	Shelby		Houston Levee Rd, Intersection at Raleigh-Lagrange Rd	STP-M	STP-M-2009-06	(\$175,500.00)	\$13,282,992.00
07/16/12	STP-R-15(136)	Shelby	SR-15	(Stage Rd) at CSX R/R, LM 3.02 in Bartlett	STP	TN-STP-S-2011-03	(\$160,000.00)	\$100,000.00
07/20/12	HSIP-57(55)	Shelby	SR-57	From W of Truse Pkwy to E of Brookhaven Circle	HSIP	TN-HSIP-2011-01	\$18,000.00	\$2,000,000.00
07/24/12	STP/CM-9409(69)	Shelby		Memphis Area Ridesharing 2000-2002	STP-M	STP-M-2011-04	(\$15,525.95)	\$781,250.00
07/24/12	HSIP-2870(4)	Shelby		Tchulahoma Rd, From Shelby Dr to Raines Rd	HSIP	TN-HSIP-2011-01	\$18,000.00	\$2,000,000.00
07/24/12	HSIP-2827(4)	Shelby		Macon Rd, Intersection at Beclair Rd in Memphis	HSIP	TN-HSIP-2011-01	\$18,000.00	\$2,000,000.00
07/25/12	HSIP-2875(3)	Shelby		Sycamore View Rd, at Intersection of Ramp from I-40 East Bound	HSIP	TN-HSIP-2011-01	\$18,000.00	\$2,000,000.00
07/26/12	CM-STP-9409(52)	Shelby		Germantown Signal System Interconnect Extension	CMAQ	99565	\$133,106.00	\$500,000.00
07/26/12	HSIP-0803(6)	Shelby		Raleigh Millington Rd, Intersection at Old Raleigh Millington Rd	HSIP	TN-HSIP-2011-01	\$18,000.00	\$2,000,000.00
07/30/12	CM-9409(160)	Shelby		Various Locations throughout Shelby County	CMAQ-M	CMAQ-2002-09	(\$1,017,068.00)	\$7,624,841.00
08/10/12	STP-R-000S(977)	Shelby		Garden Ln at Canadian National Illinois Central R/R, LM 0.44 in Memphis	STP	TN-STP-S-2011-03	\$31.86	\$100,000.00
08/17/12	HSIP-2814(5)	Shelby		Perkins Rd Extension, Intersection at Perkins Rd	HSIP	TN-HSIP-2011-01	\$18,000.00	\$2,000,000.00
08/21/12	IM-098-4(8)	Shelby		Intelligent Transportation System (ITS) Memphis (Major Phase)	IM	TN-IM-2011-02	\$1,112,400.00	\$3,620,000.00
08/22/12	CM-7900(38)	Shelby		50 Intersections throughout Shelby County	CMAQ-M	CMAQ-2002-09	\$180,000.00	\$7,624,841.00
08/30/12	HSIP-NHE-3(115)	Shelby	SR-3	(US-51S), Intersection at Harbert Ave	HSIP	TN-HSIP-2011-01	\$4,500.00	\$2,000,000.00
09/11/12	IM/NH-40-1(336)	Shelby, Fayette	I-40	From SR-177 (Germantown Rd) to Braden Rd Overpass (Memphis SmartWay ITS)	IM	TN-CMAQ-2011-01	\$64,086.00	\$2,750,000.00
09/11/12	IM/NH-40-1(336)	Shelby, Fayette	I-40	From SR-177 (Germantown Rd) to Braden Rd Overpass (Memphis SmartWay ITS)	NHS	TN-CMAQ-2011-01	(\$8,118.00)	\$475,000.00
09/12/12	HSIP-177(33)	Shelby	SR-177	From the I-40 Eastbound Off-Ramp to the I-40 Westbound On-Ramp	HSIP	TN-HSIP-2011-01	\$18,000.00	\$2,000,000.00
09/12/12	HSIP-177(34)	Shelby	SR-177	Intersection at I-40 Westbound Ramps (RSAR)	HSIP	TN-HSIP-2011-01	\$18,000.00	\$2,000,000.00
09/12/12	HSIP-177(32)	Shelby	SR-177	(Germantown Rd), Intersections at I-40 Eastbound Off-Ramp and I-40 Eastbound On-Ramp	HSIP	TN-HSIP-2011-01	\$18,000.00	\$2,000,000.00
09/21/12	CM-7900(40)	Shelby		22 Intersections throughout Shelby County	CMAQ-M	CMAQ-2002-09	\$110,000.00	\$7,624,841.00
09/21/12	CM-7900(41)	Shelby		13 Intersections throughout Shelby County	CMAQ-M	CMAQ-2002-09	\$100,000.00	\$7,624,841.00
TOTAL:							\$11,811,205.37	

ITS/SIGNAL/SAFETY & OTHER MITIGATION PROJECTS - MISSISSIPPI

06/21/12	106415/002302	Desoto		Installation of RWIS System on Coldwater Bridge in Tate/DeSoto County and Hurricane Creek Bridge on I-69/MS304 in DeSoto County	HSIP		\$360,000.00	
08/23/12	106173/096013	Desoto	US-61	US 61 @ Delta View Rd in Walls. Traffic Signal	HSIP		\$767,341.00	
08/23/12	106173/096013	Desoto	US-61	US 61 @ Delta View Rd in Walls. Traffic Signal	HSIP		\$357,659.00	
09/12/12	106415/002032	Desoto/Tate		Installation of RWIS System on Coldwater Bridge in Tate/DeSoto County and Hurricane Creek Bridge on I-69/MS304 in DeSoto County	HSIP		(\$18,810.00)	
09/27/12	105655ARRALPA/7861002	Desoto		Instal traffic signals at 2 intersections along Getwell Rd: Central Parkway and Nail Rd	AARA		(\$817.00)	
TOTAL:							\$1,465,373.00	

BIKE/PED & OTHER ENHANCEMENT PROJECTS - TENNESSEE

02/06/12	CM-9409(162)	Shelby		Shelby Farms Greenline from Farm Rd to the old Cordova Train Station	CMAQ-M	CMAQ-2012-02	\$90,000.00	\$4,400,000.00
02/09/12	SRTS-9409(113)	Shelby		Highland Oaks Elementary School	SRTS	SRTS-2008-01	\$192,069.00	\$441,083.00
02/21/12	STP-M-9409(159)	Shelby		Various Locations, Group 43, Bid Set 1 (Curb Ramp Improvements)	STP-M	STP-M-2009-04	\$1,182,000.00	\$2,189,400.00
03/26/12	IM-55-1(128)	Shelby	I-55	Welcome Center near Mississippi State Line (Replace)	IM	TN-IM-2010-01	\$1,661,874.00	\$3,750,000.00
03/30/12	STP-M-9409(123)	Shelby		Burloe Pedestrian Bridge in Bartlett	STP-M	STP-M-2009-04	\$11,200.00	\$2,235,600.00
04/02/12	STP-M-9409(163)	Shelby		Various Locations, Group 43, Bid Set 2 (Curb Ramp Improvements)	STP-M	STP-M-2009-04	\$1,182,000.00	\$2,235,600.00

DATE	PROJECT NUMBER	COUNTY	ROUTE	DESCRIPTION	FUNDING TYPE	TIP/STIP NUMBER	FEDERAL FUNDS OBLIGATED	TOTAL COST IN TIP
05/11/12	STP-M-9420(4)	Shelby		Wolf River Blvd Streetscape	STP-M	STP-M-2011-04	(\$32,772.89)	\$781,250.00
05/21/12	ARRA-STP-M-9409(140)	Shelby		Canada Rd Pedestrian and Bicycle Facilities	STP-M	STP-M-2011-04	\$31,704.00	\$781,250.00
06/04/12	IM-55-1(128)	Shelby	I-55	Welcome Center near Mississippi State Line (Replace)	IM	TN-IM-2010-01	(\$187,763.00)	\$3,750,000.00
06/21/12	STP-M-9409(123)	Shelby		Burloe Pedestrian Bridge in Bartlett	STP-M	STP-M-2009-04	\$256,046.00	\$3,666,400.00
07/26/12	BR-STP-14(37)	Shelby	SR-14	(US-61), South Parkway to McLemore Ave (Ravine, LM 9.51 & I.C. R/R, LM 9.68) in Memphis	BRR-S	TN-BRR-S-2011-01	\$2,436,305.00	\$16,000,000.00
08/07/12	STP-M-9409(122)	Shelby		Design and Construction of the Fletcher Creek Greenway	STP-M	STP-M-2009-04	\$3,360.00	\$1,088,600.00
08/09/12	STP-M-9409(120)	Shelby		Arlington Pedestrian and Bicycle Trails - Phase I	STP-M	STP-M-2011-04	(\$39,634.58)	\$781,250.00
09/19/12	STP-EN-9409(95)	Shelby		Covington Pike/Warford St Median Landscaping	ENH	SSTPE-2006-003	\$71,225.00	\$89,031.00
09/20/12	HPP-9409(108)	Shelby		Cobblestone Landing Restoration and Walkway Project	HPP-2212-TN162	HPP-2006-01	\$719,921.00	\$927,695.00
09/20/12	HPP-9409(108)	Shelby		Cobblestone Landing Restoration and Walkway Project	HPP-TN073	HPP-2006-01	\$983,928.00	\$983,928.00
09/20/12	HPP-9409(108)	Shelby		Cobblestone Landing Restoration and Walkway Project	HPP-4941	HPP-2006-01	\$2,247,951.00	\$2,899,046.00
09/20/12	HPP-9409(108)	Shelby		Cobblestone Landing Restoration and Walkway Project	HPP-TN268	HPP-TN268	\$1,980,000.00	\$1,980,000.00
TOTAL:							\$12,789,412.53	

TRANSIT PROJECTS - MATA								
02/27/12	TN-90-X327-02	Shelby		Preventive Maintenance	Section 5307		\$1,150,000.00	
02/27/12	TN-90-X343	Shelby		Preventive Maintenance	Section 5307		\$7,915,200.00	
05/21/12	TN-90-X343-01	Shelby		Preventive Maintenance/ADA Paratransit Service	Section 5307		\$3,124,800.00	
07/02/12	TN-05-0033-02	Shelby		Fixed-Guideway Modernization Preventive Maintenance	Section 5309		\$768,000.00	
08/16/12	TN-39-0002	Shelby		Alternative Analysis for Midtown Corridor	Section 5339		\$800,000.00	
08/28/12	TN-04-0060	Shelby		Transit Signal Priority System	Section 5309		\$644,000.00	
08/30/12	TN-37-X077-03	Shelby		Jobs Access/Reverse Commute	Section 5317		\$753,718.00	
09/13/12	TN-90-X343-02	Shelby		ADA Paratransit Service/Fixed-Route Replacement Buses/Service Vehicles/Bus Facility Improvements/Transit Enhancements	Section 5307		\$1,263,664.00	
TOTAL:							\$16,419,382.00	

FUNDING SOURCES

This section provides the reader with a short description of the different funding sources referenced in the 2012 list of federally obligated projects.

FEDERAL HIGHWAY ADMINISTRATION (FHWA) FUNDS:

American Recovery and Reinvestment Act (ARRA):

ARRA contains approximately \$120 billion dollars to be used on “Shovel-Ready” construction projects intended to modernize infrastructure including roads, bridges, transit systems, waterways, and to repair and construct schools and parks. ARRA funds must be obligated in a timely fashion because the legislation includes various “use-it-or-lose-it” provisions.

Bridge Replacement and Rehabilitation (BRR):

This funding program can be used for bridge replacement and repair on bridges determined to be structurally deficient, functionally obsolete, or in need of systematic preventative maintenance.

Congestion Mitigation Air Quality (CMAQ):

This funding program directs funding to projects and programs which reduce transportation emissions in air quality non-attainment or maintenance areas as determined by the Environmental Protection Agency. These funds are allocated to the state and to the local jurisdictions. Certain CMAQ projects are eligible for funding with 100 percent Federal funds. They include traffic control signalization projects, commuter carpooling and vanpooling activities or installation of traffic signs, traffic lights or priority control systems for emergency vehicles or transit vehicles at signalized intersections. State and local matches are required if CMAQ funds are used for mass transit projects or other air quality activities.

Highway Safety Improvement Program (HSIP):

Funding from this program can be used for any highway safety improvement on any public road or publicly owned bicycle or pedestrian pathway or trail and can include such items as: installing fumble strips, traffic calming features, improved highway signs and pavement markings and improvements for pedestrian and bicyclist safety or the safety of the disabled. This program also includes specific funding for “High Risk Rural Roads” and “Elimination of Hazards Relating to Railway-Highway Crossing”.

Interstate Maintenance (IM):

The Interstate Maintenance (IM) program provides funding for resurfacing, restoring, rehabilitating and reconstructing (4R) most routes on the Interstate System.

National Highway System (NHS):

The National Highway System (NHS) includes the Interstate Highway System as well as other roads important to the nation’s economy, defense, and mobility. The NHS was developed by the Department of Transportation (DOT) in cooperation with the states, local officials, and metropolitan planning organizations (MPOs).

V. APPENDIX A - EXPLANATION OF FUNDING SOURCES

Surface Transportation Program (STP):

This flexible funding source can be used for a broad range of improvements, similar to NHS funds. However, STP funds may be used to improve the design or operation of any road which is which is designated as an urban collector or higher on the State Functional Classification System. STP funds can also be used to fund alternative modes of transportation including transit capital projects and transit facilities. SSTP refers to projects programmed by one of the state agencies using the state's allocation of STP funds. LSTP refers to projects utilizing STP funds that are designated specifically for the local area. CSTP refers to funds that are used for road projects which are classified as a Rural Major Collector or above, or on a Local Road or Rural Minor Collector. Any jurisdiction receiving STP funds must provide a match of at least 20 percent of the total project cost. There are also STP funds available to designated municipalities with populations greater than 5,000 persons that are not in an urban area.

FEDERAL TRANSIT AUTHORITY (FTA) FUNDS:

Section 5307 Urbanized Area Formula Program:

These funds can be used for the following: 1) planning, engineering design and evaluation of transit projects and other technical transportation-related studies; 2) capital investments in bus and bus-related activities such as replacement of buses, overhaul of buses, rebuilding of buses, crime prevention and security equipment and construction of maintenance and passenger facilities; and 3) capital investments in new and existing fixed guideway systems including rolling stock, overhaul and rebuilding of vehicles, track, signals, communications, and computer hardware and software.

Section 5309 Transit Capital Investment Program:

These can be used the establishment of new rail or busway projects, the improvement and maintenance of existing rail and other fixed guideway systems, and the upgrading of bus systems. MATA determines how these funds are programmed. These funds also require 20% match which are typically divided between state and local government, with each contributing 10%.

Section 5317 New Freedom Program:

These funds are directed to elderly and disabled transportation services that go beyond those required by the Americans with Disabilities Act (ADA) . These funds also require 20% match which are typically divided between state and local government, with each contributing 10%.

Section 5339 Alternative Analysis Program:

These funds are used to assist in financing the evaluation of all reasonable modal and multimodal alternatives and general alignment options for identified transportation needs in a particular, broadly defined travel corridor. These funds also require 20% match which are typically divided between state and local government, with each contributing 10%.

V. APPENDIX A - EXPLANATION OF FUNDING SOURCES

OTHER FUNDING SOURCES:

Transportation Enhancement Grant (ENH):

Specific activities which can be funded with Surface Transportation Program (STP) funds; activities include pedestrian/bicycle facilities, acquisition of scenic easements and scenic historic sites, scenic or historic highway programs, scenic beautification, historic preservation, rehabilitation/operation of historic transportation structures, railway corridor preservation, control/removal of outdoor advertising, archeological planning/research and mitigation of highway runoff water pollution.

Emergency Relief (ER):

Emergency relief funds available through a special program from the Highway Trust Fund for the repair or reconstruction of Federal-aid highways and roads on Federal lands which have suffered serious damage as a result of a natural disaster or a catastrophic failure from an external cause.

Economic Stimulus (ES):

Projects identified through appropriation bills approved by Congress.

High Priority Project (HPP):

Projects using these funds are earmarked by the U.S. Congress as high priorities, at the federal level during the Congressional appropriations and re-authorization process. This amounts to roughly 5% of the total transportation budget.

Safe Routes to Schools (SRTS):

This program seeks to enable and encourage children in kindergarten through eighth grades (K-8) to walk or bicycle to school, thereby promoting increased physical activity. The SRTS program is multi-faceted and requires that applicants address non-infrastructure activities before, during, and after infrastructure improvements have been made. Infrastructure projects include "traditional" items such as sidewalks, signs, signals, crossing improvements, etc. Non-infrastructure activities include education, encouragement, enforcement, and evaluation. SRTS projects are funded on a cost reimbursement basis only.