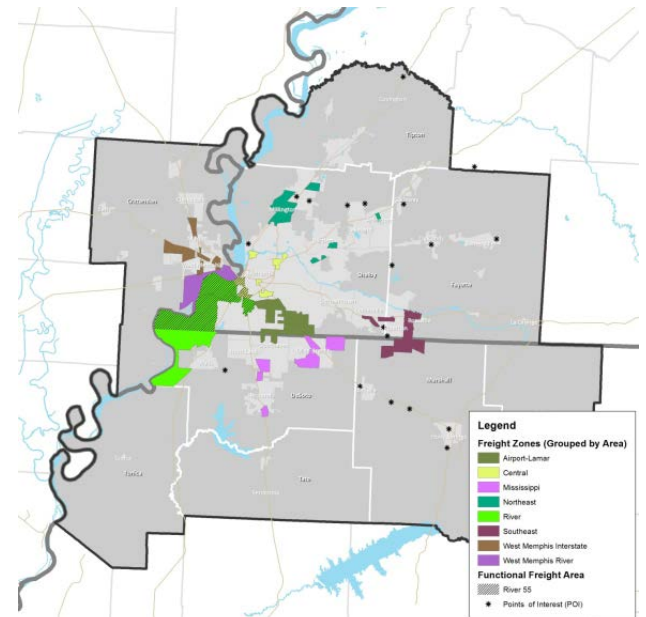
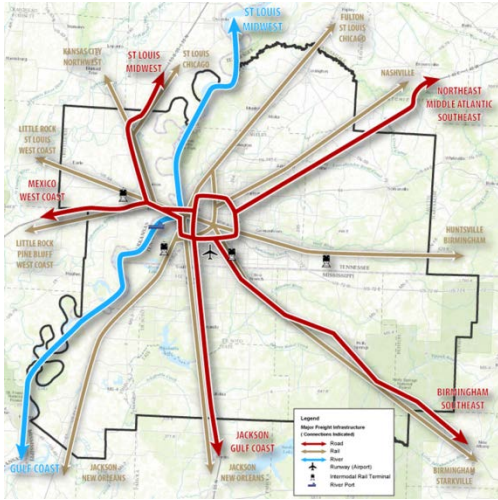


Greater Memphis Regional Freight Plan Handout:

Purpose:

The Regional Freight Plan seeks to address the freight competitiveness of industrial sites served by transportation. It recommends projects, policies and programs which could help the Greater Memphis Region adapt and grow in the ever-changing freight environment.



Key Plan Components:

- Detailed analysis of 8 Freight Areas (above right) in the Greater Memphis Region made up of 35 Freight Zones: intermodal accessibility, employment statistics and worker access, open real estate, etc.
- Inventory of regional freight assets across every mode and potential bottlenecks and improvements.
- Assessment of national freight context: trade patterns with US megaregions and peer cities by mode, developing technologies, and federal policy.

Recommendations:

- Upgrade key freight corridors such as Lamar Avenue that connect to intermodal facilities & national highways.
- Encourage greater coordination & carrier connections for the region's rail network.
- Introduce and upgrade ITS technology on freight corridors to enhance safety and efficiency.

Next Steps: This plan supports development of the 2050 Regional Transportation Plan and future TIPs

Fast Freight Facts

Top Commodities by Weight		Top Commodities by Value	
Commodity	% of Total (weight)	Commodity	% of Total (value)
Coal-n.e.c.	34.1%	Electronics	18.2%
Other foodstuffs	8.1%	Pharmaceuticals	15.5%
Gasoline	5.4%	Precision instruments	9.0%
Cereal grains	5.3%	Machinery	6.7%
Nonmetal min. prods.	5.0%	Motorized vehicles	6.0%
Total Top 10	75.2%	Total Top 10	75.3%

Modes by % Freight Carried

Mode	% of Tonnage	% of Value
Roadway	93%	66%
Rail	5%	1%
River	2%	<1%
Runway	<1%	33%
Total	100%	100%