



Memphis MPO
METROPOLITAN PLANNING ORGANIZATION

Strengthening Regional Transportation

January 22, 2014

Mr. Rick Pack
Transportation Manager
TDOT State Program Development Office
James K. Polk Building
505 Deaderick Street, Suite 600
Nashville, TN 37243

Dear Mr. Pack

The Memphis MPO has determined that the requested adjustment to the 2014-17 TIP to add the PE-N and PE-D phases to the type of work for FY 2014 for the I-40/Riverside Drive Gateway Enhancements project TIP #ENH-2008-01 meets the criteria to be processed as an administrative adjustment and not as an amendment. As a result, there was no public notice of the change requested by the Tennessee Department of Transportation (TDOT) and no vote by the Transportation Policy Board to approve the change.

The project changes are for an existing TIP project, the adjustment does not affect the project scope, and there is no change in the total project cost. Since the TIP is a subset of the 2040 LRTP then air quality conformity determination made on the LRTP applies to the TIP (40 CFR 93.122).

It is the request of the Memphis MPO that the TIP projects be amended into the State of Tennessee Statewide Transportation Improvement Plan. Attached to this letter are the old and newly adjusted TIP pages.

Sincerely,

Pragati Srivastava, Administrator
Memphis MPO

CC:

Ms. Monique Hazlewood, Local Program Office, TDOT
Ms. Rhiannon Chambers, State Program Development Office, TDOT
Ms. Angie Midgett, Long-Range Planning Division, TDOT
Ms. Linda Tidwell, Long-Range Planning Division, TDOT
Mr. Alan Jones, Long-Range Planning Division, TDOT

T 901.576.7190 F 901.576.7272

125 N Main Street, Suite 450
Memphis, TN 38103
memphismpo.org



SECTION C

LOCAL TENNESSEE SPONSORED PROJECTS

Funding & Expenditures Fiscal Years 2014 - 2017

Funding Sources	Fiscal Year 2014	Fiscal Year 2015	Fiscal Year 2016	Fiscal Year 2017	Total
Carry Over Funds (Federal STP)	\$64,864,970	\$51,923,139	\$20,425,977	\$11,493,897	\$64,864,970
Annual STP-M Federal Funds	\$15,240,318	\$15,270,847	\$15,270,847	\$15,270,847	\$61,052,859
Total STP-M Federal Funding	\$80,105,288	\$67,193,986	\$35,696,824	\$26,764,744	\$125,917,829
STP-M State Funds	\$43,000	\$342,000	\$0	\$0	\$385,000
STP-M Local Funds	\$6,326,491	\$10,645,831	\$5,560,061	\$5,731,061	\$28,263,442
STP-M Expenditure	\$34,551,640	\$57,755,840	\$29,762,988	\$31,620,988	\$153,691,454
STP-S Federal Funds	\$6,960,000	\$0	\$0	\$0	\$6,960,000
STP-S State Funds	\$1,740,000	\$0	\$0	\$0	\$1,740,000
STP-S Expenditure	\$8,700,000	\$0	\$0	\$0	\$8,700,000
CMAQ Federal Funds	\$1,850,000	\$0	\$0	\$0	\$1,850,000
CMAQ Local Funds	\$462,500	\$0	\$0	\$0	\$462,500
CMAQ Expenditure	\$2,312,500	\$0	\$0	\$0	\$2,312,500
ENH Federal Funds	\$6,337,622	\$0	\$0	\$0	\$6,337,622
ENH State Funds	\$1,000	\$0	\$0	\$0	\$1,000
ENH Local Funds	\$1,583,407	\$0	\$0	\$0	\$1,583,407
ENH Expenditure	\$7,922,029	\$0	\$0	\$0	\$7,922,029
FBD Federal Funds	\$800,000	\$0	\$0	\$0	\$800,000
FBD Local Funds	\$200,000	\$0	\$0	\$0	\$200,000
FBD Expenditure	\$1,000,000	\$0	\$0	\$0	\$1,000,000
NHPP Federal Funds	\$3,760,000	\$5,440,000	\$12,400,000	\$0	\$21,600,000
NHPP State Funds	\$940,000	\$1,360,000	\$3,100,000	\$0	\$5,400,000
NHPP Expenditure	\$4,700,000	\$6,800,000	\$15,500,000	\$0	\$27,000,000
HPP Federal Funds	\$5,902,867	\$0	\$3,438,838	\$8,415,520	\$17,757,225
HPP Local Funds	\$1,475,717	\$0	\$859,710	\$2,103,880	\$4,439,307
HPP Expenditure	\$7,378,584	\$0	\$4,298,548	\$10,519,400	\$22,196,532
DEMO Federal Funds	\$2,951,785	\$0	\$0	\$0	\$2,951,785
DEMO Expenditure	\$2,951,785	\$0	\$0	\$0	\$2,951,785
SRTS Federal Funds	\$224,125	\$0	\$0	\$0	\$224,125
SRTS Expenditure	\$224,125	\$0	\$0	\$0	\$224,125
TAP Federal Funds	\$2,312,609	\$0	\$0	\$0	\$2,312,609
TAP Local Funds	\$578,152	\$0	\$0	\$0	\$578,152
TAP Expenditure	\$2,890,761	\$0	\$0	\$0	\$2,890,761
TCSP Federal Funds	\$225,000	\$0	\$0	\$0	\$225,000
TCSP Local Funds	\$56,250	\$0	\$0	\$0	\$56,250
TCSP Expenditure	\$281,250	\$0	\$0	\$0	\$281,250
TIGER IV Federal Funds	\$14,939,000	\$0	\$0	\$0	\$14,939,000
TIGER IV Local / Private Funds	\$15,398,301	\$0	\$0	\$0	\$15,398,301
TIGER IV State Funds	\$2,000,000	\$0	\$0	\$0	\$2,000,000
TIGER IV Expenditure	\$32,337,301	\$0	\$0	\$0	\$32,337,301
FTA (5309) Federal Funds	\$2,200,000	\$0	\$0	\$0	\$2,200,000
FTA (5309) Local Funds	\$550,000	\$0	\$0	\$0	\$550,000
FTA 5309 Expenditure	\$2,750,000	\$0	\$0	\$0	\$2,750,000
TOTAL FUNDING	\$159,923,113	\$84,981,817	\$61,055,433	\$43,015,205	\$265,132,554
TOTAL EXPENDITURE	\$107,999,974	\$64,555,840	\$49,561,536	\$42,140,388	\$264,257,737
BALANCE	\$51,923,139	\$20,425,977	\$11,493,897	\$874,817	\$874,817

SECTION C

LOCAL TENNESSEE SPONSORED PROJECTS

Funding & Expenditures Fiscal Years 2014 - 2017

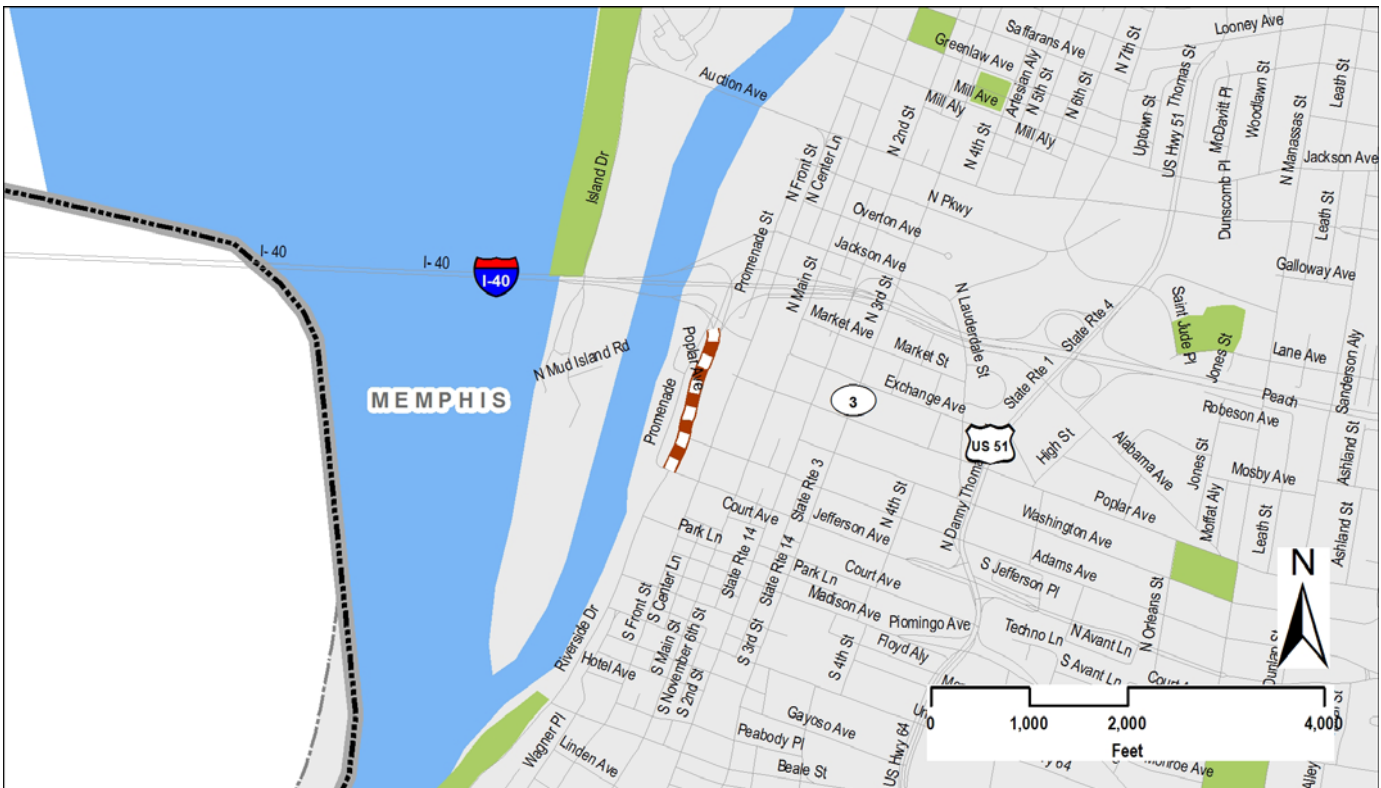
Funding Sources	Fiscal Year 2014	Fiscal Year 2015	Fiscal Year 2016	Fiscal Year 2017	Total
Carry Over Funds (Federal STP)	\$64,864,970	\$51,923,139	\$20,425,977	\$11,493,897	\$64,864,970
Annual STP-M Federal Funds	\$15,240,318	\$15,270,847	\$15,270,847	\$15,270,847	\$61,052,859
Total STP-M Federal Funding	\$80,105,288	\$67,193,986	\$35,696,824	\$26,764,744	\$125,917,829
STP-M State Funds	\$43,000	\$342,000	\$0	\$0	\$385,000
STP-M Local Funds	\$6,326,491	\$10,645,831	\$5,560,061	\$5,731,061	\$28,263,442
STP-M Expenditure	\$34,551,640	\$57,755,840	\$29,762,988	\$31,620,988	\$153,691,454
STP-S Federal Funds	\$6,960,000	\$0	\$0	\$0	\$6,960,000
STP-S State Funds	\$1,740,000	\$0	\$0	\$0	\$1,740,000
STP-S Expenditure	\$8,700,000	\$0	\$0	\$0	\$8,700,000
CMAQ Federal Funds	\$1,850,000	\$0	\$0	\$0	\$1,850,000
CMAQ Local Funds	\$462,500	\$0	\$0	\$0	\$462,500
CMAQ Expenditure	\$2,312,500	\$0	\$0	\$0	\$2,312,500
ENH Federal Funds	\$6,337,622	\$0	\$0	\$0	\$6,337,622
ENH State Funds	\$1,000	\$0	\$0	\$0	\$1,000
ENH Local Funds	\$1,583,407	\$0	\$0	\$0	\$1,583,407
ENH Expenditure	\$7,922,029	\$0	\$0	\$0	\$7,922,029
FBD Federal Funds	\$800,000	\$0	\$0	\$0	\$800,000
FBD Local Funds	\$200,000	\$0	\$0	\$0	\$200,000
FBD Expenditure	\$1,000,000	\$0	\$0	\$0	\$1,000,000
NHPP Federal Funds	\$3,760,000	\$5,440,000	\$12,400,000	\$0	\$21,600,000
NHPP State Funds	\$940,000	\$1,360,000	\$3,100,000	\$0	\$5,400,000
NHPP Expenditure	\$4,700,000	\$6,800,000	\$15,500,000	\$0	\$27,000,000
HPP Federal Funds	\$5,902,867	\$0	\$3,438,838	\$8,415,520	\$17,757,225
HPP Local Funds	\$1,475,717	\$0	\$859,710	\$2,103,880	\$4,439,307
HPP Expenditure	\$7,378,584	\$0	\$4,298,548	\$10,519,400	\$22,196,532
DEMO Federal Funds	\$2,951,785	\$0	\$0	\$0	\$2,951,785
DEMO Expenditure	\$2,951,785	\$0	\$0	\$0	\$2,951,785
SRTS Federal Funds	\$224,125	\$0	\$0	\$0	\$224,125
SRTS Expenditure	\$224,125	\$0	\$0	\$0	\$224,125
TAP Federal Funds	\$2,312,609	\$0	\$0	\$0	\$2,312,609
TAP Local Funds	\$578,152	\$0	\$0	\$0	\$578,152
TAP Expenditure	\$2,890,761	\$0	\$0	\$0	\$2,890,761
TCSP Federal Funds	\$225,000	\$0	\$0	\$0	\$225,000
TCSP Local Funds	\$56,250	\$0	\$0	\$0	\$56,250
TCSP Expenditure	\$281,250	\$0	\$0	\$0	\$281,250
TIGER IV Federal Funds	\$14,939,000	\$0	\$0	\$0	\$14,939,000
TIGER IV Local / Private Funds	\$15,398,301	\$0	\$0	\$0	\$15,398,301
TIGER IV State Funds	\$2,000,000	\$0	\$0	\$0	\$2,000,000
TIGER IV Expenditure	\$32,337,301	\$0	\$0	\$0	\$32,337,301
FTA (5309) Federal Funds	\$2,200,000	\$0	\$0	\$0	\$2,200,000
FTA (5309) Local Funds	\$550,000	\$0	\$0	\$0	\$550,000
FTA 5309 Expenditure	\$2,750,000	\$0	\$0	\$0	\$2,750,000
TOTAL FUNDING	\$159,923,113	\$84,981,817	\$61,055,433	\$43,015,205	\$265,132,554
TOTAL EXPENDITURE	\$107,999,974	\$64,555,840	\$49,561,536	\$42,140,388	\$264,257,737
BALANCE	\$51,923,139	\$20,425,977	\$11,493,897	\$874,817	\$874,817

TIP #	ENH-2008-01	TDOT PIN #	105525.25	Horizon Year	N/A	Lead Agency	Memphis
County	Shelby	Length	0.3 miles	L RTP #	Consistent w/ L RTP	Conformity	Exempt
Project Name	I-40 / Riverside Drive Gateway Enhancements					Total Cost	\$107,000

Termini/Intersection
Riverside Drive from Interstate 40, Tennessee Exit 1A ramp to Jefferson Avenue

Project Description
The landscaping enhancements planned for the I-40 and Riverside Drive gateway consist of tree plantings and ground cover for three sections of the exit area. Trees will be planted along a median strip primarily visible by traffic entering Downtown from westbound I-40. Another cluster of trees and ground cover will be planted in an exit area median strip that is visible to traffic exiting from both I-40 eastbound and westbound lanes. In addition, landscaping will be replaced adjacent to the Tennessee Visitors Center. A welcome entry sign will be installed at the bottom of the Exit 1A ramp.

Obligated Funds	Fiscal Year	Type of Work	Funding Type	Total Funds	Fed Funds	State Funds	Local Funds
	2014	CONST	ENH	\$107,000	\$85,600	\$1,000	\$20,400



Remarks