



Memphis MPO  
METROPOLITAN PLANNING ORGANIZATION

# Active Transportation Working Group Meeting

Zylavian Watley and Kate Horton  
Memphis MPO  
Date: May 17, 2018

# Agenda



- 1) **Welcome & Introductions**
- 2) **City of Germantown Bicycle and Pedestrian Initiatives ←PRESENTATION by Sarah Goralewski - AICP, City of Germantown**
- 3) **Announcements and Briefings**
  - a. 2017 Bicycle & Pedestrian Report
    - i. Safety Overview (2014-2017)
  - b. FY 2019 Transportation Alternatives: Call for Applications Timeline
- 4) **New Business**
- 5) **Adjourn**



# Welcome and Introductions

The background of the slide is a grayscale aerial photograph of a large, curved bridge with a complex truss structure spanning a wide river. The bridge's design is modern and curved, with multiple lanes. The surrounding area includes some buildings and greenery on the riverbanks.

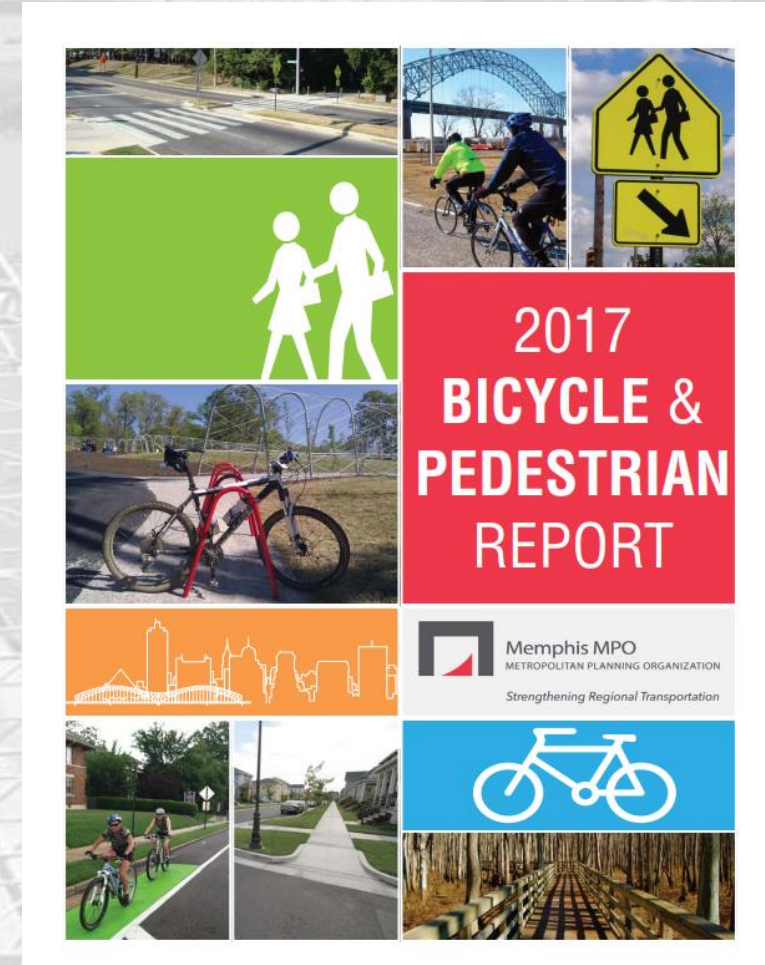
## **City of Germantown Bicycle and Pedestrian Initiatives Sarah Goralewski - AICP, City of Germantown**



# Announcements and Briefings

## 2017 Bicycle and Pedestrian Report

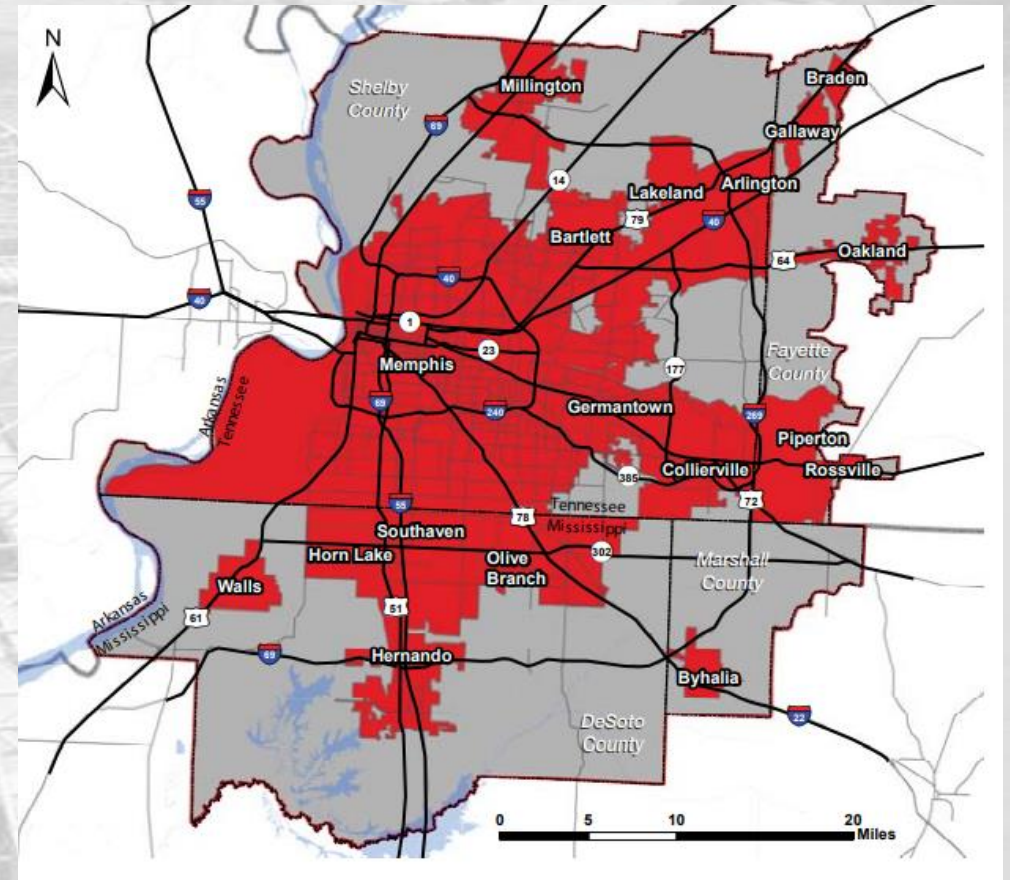
- **Background**
  - 2014 Bicycle and Pedestrian Plan
    - Encourages and enhances bicycle and pedestrian travel within the Memphis MPO region
- **2017 Bicycle and Pedestrian Report**
  - Highlights the progress that has been made within the Memphis MPO's Planning Area
  - Promotes bicycle and pedestrian awareness through educational campaigns and encouragement efforts, as well as planning and construction of bicycle and pedestrian facilities and amenities
  - Safety Analysis





# 2017 Bicycle and Pedestrian Report

- **Agency and Jurisdiction Updates**
  1. Tennessee Department of Transportation
  2. Mississippi Department of Transportation
  3. Memphis Area Transit Authority
  4. Shelby County
  5. Town of Arlington
  6. City of Bartlett
  7. Town of Collierville
  8. City of Germantown
  9. City of Lakeland
  10. City of Memphis
  11. City of Millington
  12. Fayette County
  13. DeSoto County
  14. Marshall County



Memphis MPO Planning Area

# 2017 Bicycle and Pedestrian Report

- Agency and Jurisdiction Updates
  - Example: Town of Collierville:

## COLLIERVILLE - TENNESSEE



The **Town of Collierville**, located in Shelby County, Tennessee, had a 2016 population estimate of 49,178 and a total area of 36 square miles.

The Collierville Greenbelt system connects neighborhoods, parks, schools, and commercial areas and offers an alternative transportation option with 18.3 miles of trails and connectors. Since the adoption of the Memphis MPO's Regional Bicycle and Pedestrian Plan, Collierville has completed construction on a new section of paved and gravel trail at W.C. Johnson Park (**Image III**).

Additionally, Collierville is in the process of planning or construction the following bicycle and pedestrian plans and projects:

- **Collierville Center Connect Phase I & II** – Center Street Pedestrian Improvements
- **ADA Transition Plan**



**Image III: W.C. Johnson Park Trail**  
(Image Credit: Town of Collierville)

Town of Collierville in  
Bike/Ped Report

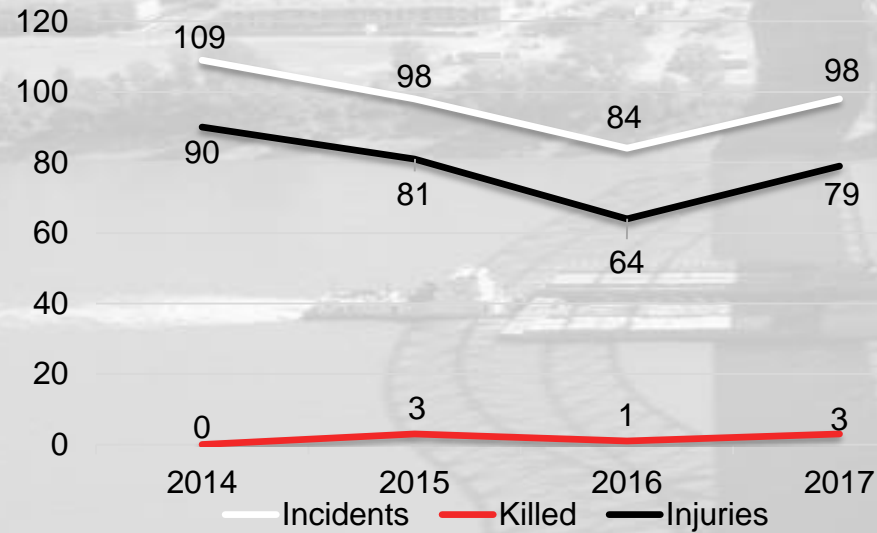


Reported crash data provided by Mississippi and Tennessee Department of Transportation that covers years 2014-2017

- Crash Events by Year
- Crash Events by Severity
- Crash Events by Time of Day
- Crash Events by Day of the Week
- Crash Events by Season
- Crash Events by Month
- Density Map of Bicycle and Pedestrian Crash Locations

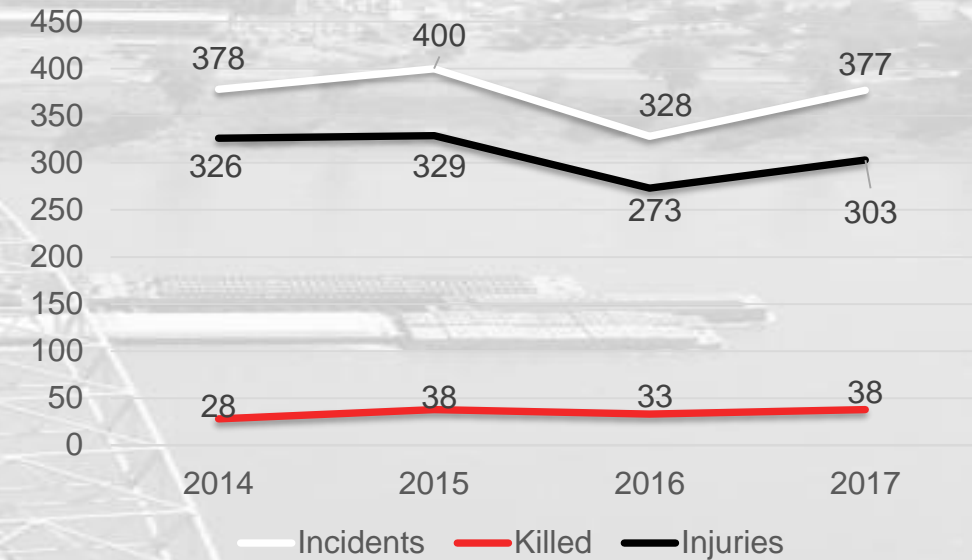


## • Crash Events by Year (Bicycle)



**389** Reported Bicycle Crashes in the MPO Planning Area (2014-2017)

## • Crash Events by Year (Pedestrian)



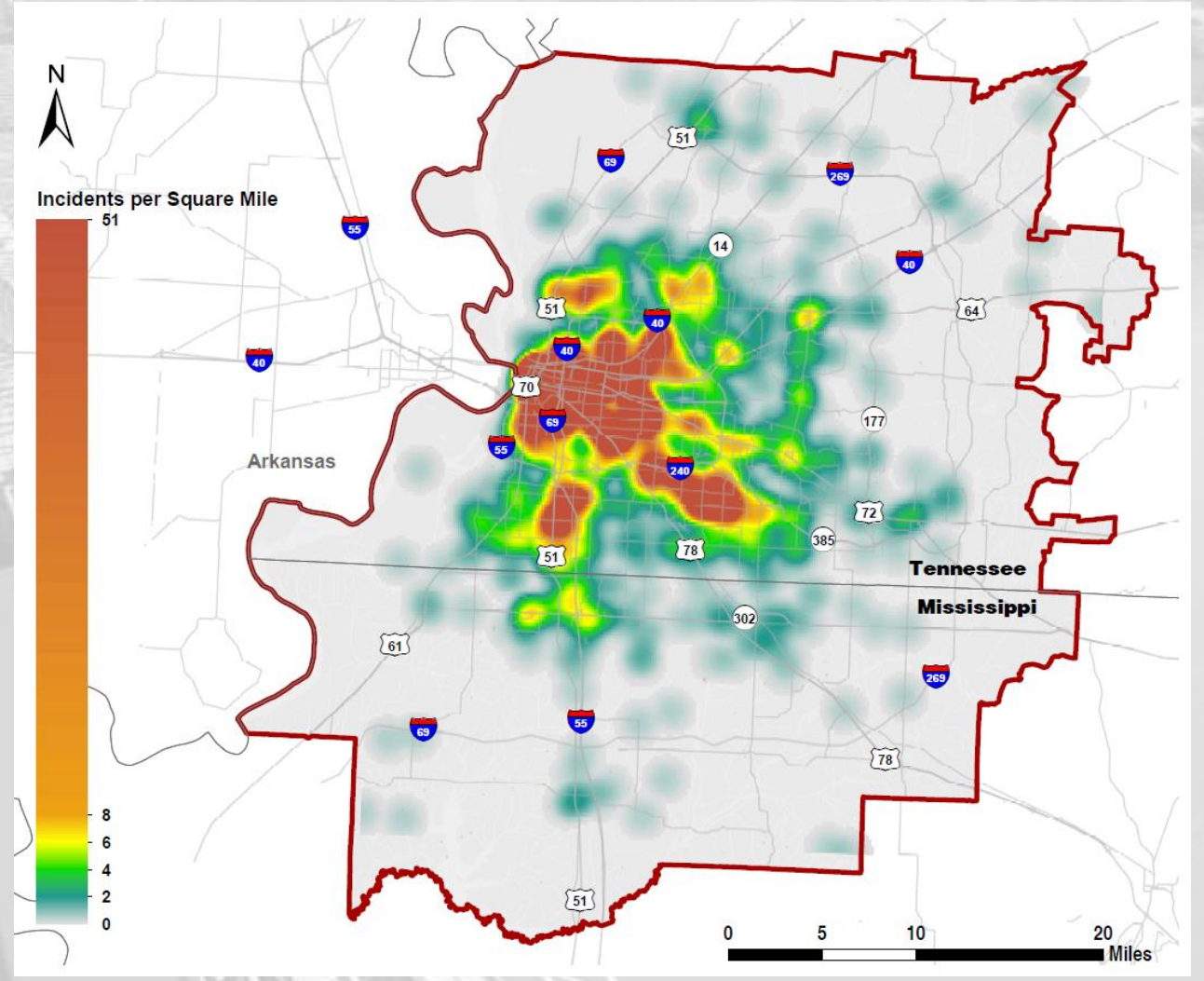
**1,483** Reported Pedestrian Crashes in the MPO Planning Area (2014-2017)

- Crash Events by Severity (Bicycle and Pedestrian)

Crash Category	Bicycle Crash Events	% of All Bicycle Crash Events	Pedestrian Crash Events	% of All Pedestrian Crash Events	Combined Bicycle and Pedestrian Crash Events	% of All Combined Bicycle and Pedestrian Crash Events
Fatal	7	1.80%	131	8.83%	138	7.37%
Suspected Serious Injuries	32	8.23%	247	16.66%	279	14.90%
Suspected Minor Injuries	237	60.93%	815	54.96%	1052	56.20%
Possible Injuries	45	11.57%	169	11.40%	214	11.43%
No Injury	64	16.45%	105	7.08%	169	9.03%
Unknown	4	1.03%	16	1.08%	20	1.07%
Total	389	-	1483	-	1872	-

- Bicycle and Pedestrian Crash Location (Density Map)**

- 37% of reported bicycle and pedestrian crashes occurs within the confines of the I-240 loop



Crashes per Square Mile

# 2017 Bicycle and Pedestrian Report

## FY 2017-20 TIP PROJECTS

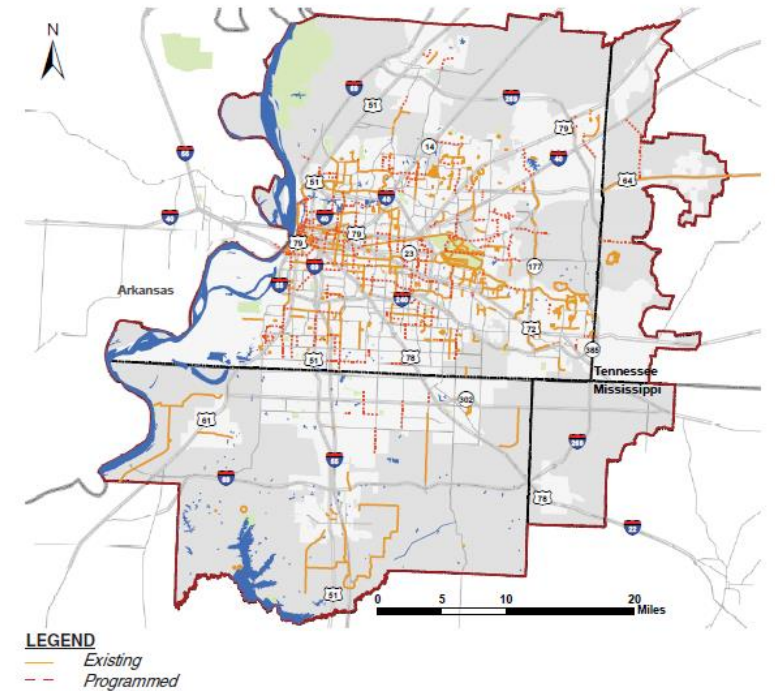
TABLE II (Continued)

Bicycle and Pedestrian Projects - Tennessee (continued)			
Project Name	Agency	Funding Source	Federal Funds
<b>Corridor/Streetscape Projects</b>			
Collinsville Center Connect - Phase I & II	Collinsville	TA	\$880,000
		ENH	\$756,846
Walker Avenue Streetscape - Phase 2	Memphis	ENH	\$458,830
Biomedical Planning District - Streetscape/Sidewalks	Memphis	HPP	\$3,611,636
Jefferson Ave Cycle Track	Memphis	STBG	\$3,428,000
Bike Routes - 25 Miles	Memphis	STBG	\$342,927
Great Streets Downtown Corridor Planning & Design	Memphis	TA	\$139,316
<b>TOTAL</b>			<b>\$9,617,555</b>
<b>Access to Transit Projects</b>			
Bus Bike Rack Replacement	MATA	TA	\$19,845
Crosstown Corridor Superstop Enhancements	MATA	TA	\$400,000
Bicycle Access to Transit Project	MATA	TA	\$120,000
Transit Stop Enhancements (4 locations)	MATA	TA	\$40,000
<b>TOTAL</b>			<b>\$579,845</b>
<b>ADA Transition Plans</b>			
ADA Transition Plan	Bartlett	TA	\$120,000
ADA Transition Plan	Collinsville	TA	\$150,000
ADA Transition Plan	Germantown	TA	\$140,000
ADA Transition Plan	Millington	TA	\$100,000
ADA Transition Plan	Oakland	STBG (Local)	\$48,000
ADA Transition Plan	Shelby County	TA	\$300,000
<b>TOTAL</b>			<b>\$858,000</b>
Bicycle and Pedestrian Projects - Mississippi			
Project Name	Agency	Funding Source	Federal Funds
<b>Shared-Use Path Projects</b>			
Johnson Creek Greenway - Phase II	DeSoto County	STBG	\$413,600
		TE	\$800,000
Trail and Overlook Project	DeSoto County	TA	\$216,000
Linear Park Bike/Ped Path	Hernando	TE	\$610,000
Snowden Pedestrian Path and Bicycle Project	Southaven	STBG	\$615,600
Pedestrian and Bike Trail	Southaven	TE	\$900,000
<b>TOTAL</b>			<b>\$3,555,800</b>
<b>Sidewalk/Crosswalk Projects</b>			
Lewisburg School/Craft Road Sidewalks	Hernando	TA	\$198,400
Hernando Square Pedestrian Improvements	Hernando	TA	\$284,000
Nesbit Sidewalk Project	Hernando	TA	\$456,282
State Line Road Pedestrian Project	Southaven	STBG	\$693,388
<b>TOTAL</b>			<b>\$1,634,050</b>
<b>Total FY 2017-20 TIP Bicycle and Pedestrian Projects (TN &amp; MS)</b>			<b>\$42,239,489</b>

- Counter Program
- FY 2017-TIP Projects
- Bicycle and Pedestrian Facilities Map
- Best Practices

## BICYCLE & PEDESTRIAN FACILITIES

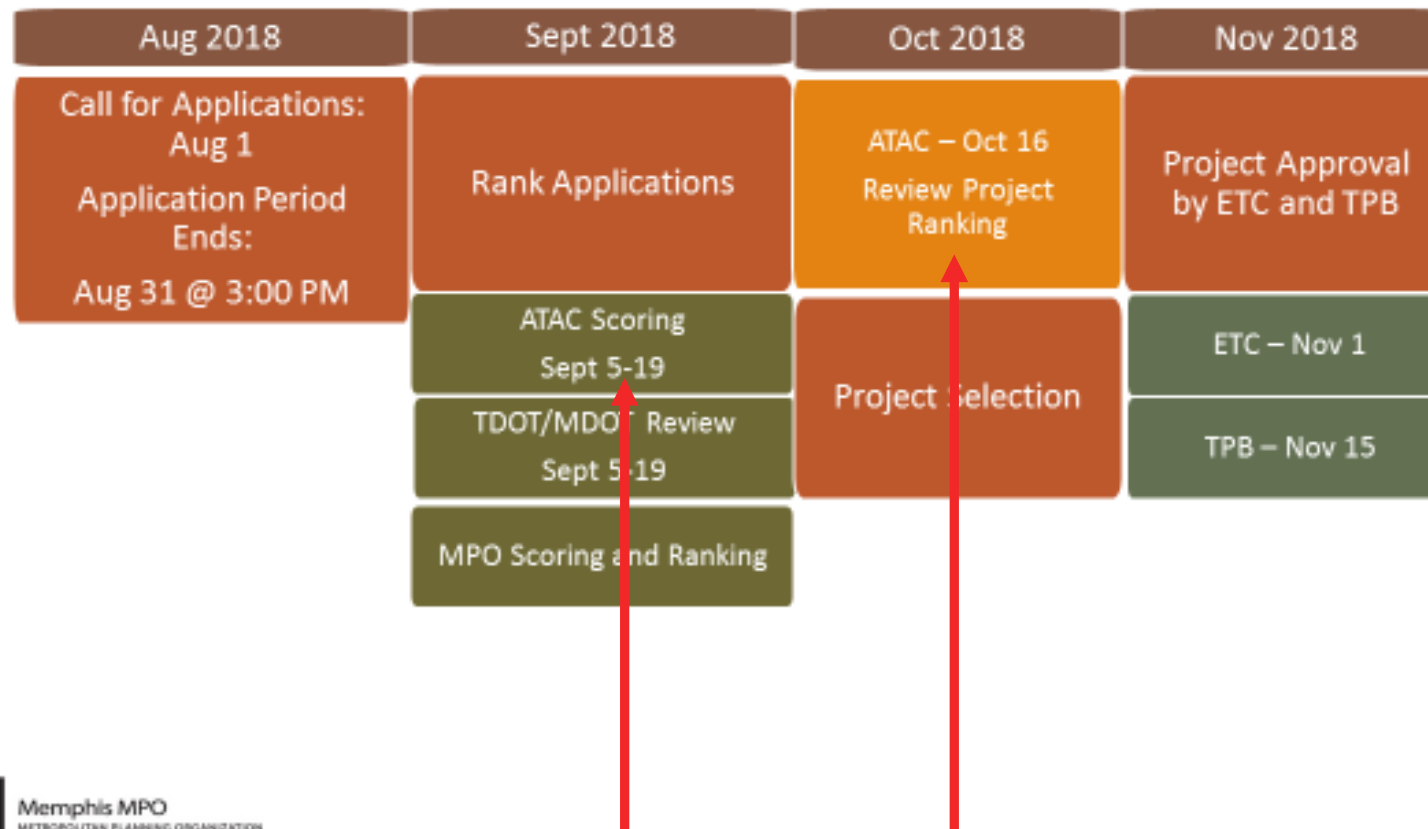
BICYCLE & PEDESTRIAN FACILITIES





# Transportation Alternatives: FY 2019 Cycle

## FY 2019 MPO TA Project Timeline





## Resources:

**Bicycle and Pedestrian Report:** <http://memphismpo.org/plans/multi-modal-plans/bike-ped-plan>

**Transportation Alternatives:** <http://memphismpo.org/plans/multi-modal-plans/bike-ped-plan/transportation-alternatives-program>

## Contact Information:

Zylavian Watley, Bicycle and Pedestrian Coordinator  
[Zylavian.Watley@memphistn.gov](mailto:Zylavian.Watley@memphistn.gov)  
(901) 636-7216

Kate Horton  
[Kate.Horton@memphistn.gov](mailto:Kate.Horton@memphistn.gov)  
(901) 636-7218





# Questions?

Please unmute yourself at this time, if you have any questions