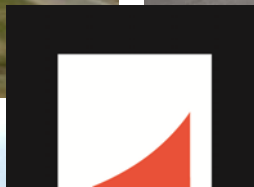


List of 2015 Federally Obligated Projects

for the Memphis Urban Area Metropolitan Planning Organization

[Lista de Proyectos Federales 2015 Obligados por la MPO Area Urbana Memphis]





Memphis MPO
METROPOLITAN PLANNING ORGANIZATION

Memphis Urban Area Metropolitan Planning Organization
Department of Regional Services
125 North Main Street, Suite 450
Memphis, TN 38103
901.576.7190 (phone)
901.576.7272 (fax)
www.memphismpo.org

This document is available in accessible formats when requested ten (10) calendar days in advance.
Este documento está disponible en formatos accesibles cuando se solicite con cinco días de antelación.

This document was prepared and published by the Memphis Urban Area Metropolitan Planning Organization (MPO) and is prepared in cooperation with and financial assistance from the following public entities: the Federal Transit Administration (FTA), the Federal Highway Administration (FHWA), the Tennessee Department of Transportation (TDOT), the Mississippi Department of Transportation (MDOT), as well as the City of Memphis, Shelby County, Tennessee and DeSoto County, Mississippi. This financial assistance notwithstanding, the contents of this document do not necessarily reflect the official view or policies of the funding agencies.

It is the policy of the Memphis Urban Area Metropolitan Planning Organization (MPO) not to discriminate on the basis of age, race, color, national origin or disability in its hiring or employment practices, or in its admission to or operations of its program, services, or activities. All inquiries for Title VI and/or the American Disabilities Act, contact Mitchell Lloyd, at 901-576-7146 or Mitchell.Lloyd@memphistn.gov.

TABLE OF CONTENTS

I. MPO OVERVIEW	
A. ACRONYMS.....	1
B. THE MEMPHIS URBAN AREA METROPOLITAN PLANNING ORGANIZATION.....	2
II. ABOUT THIS REPORT	
A. FEDERAL GUIDANCE.....	4
B. TRANSPORTATION IMPROVEMENT PROGRAM.....	5
III. SUMMARY OF FY 2015 OBLIGATED PROJECTS	
A. BY PROJECT TYPE.....	6
B. BY FUNDING TYPE.....	7
IV. LIST OF 2015 FEDERALLY OBLIGATED PROJECTS.....	9
V. APPENDIX A (EXPLANATION OF FUNDING SOURCES).....	13

I. MPO OVERVIEW

A. ACRONYMS

ATAC	Active Transportation Advisory Committee
ETC	Engineering and Technical Committee
FAC	Freight Advisory Committee
FHWA	Federal Highway Administration
FTA	Federal Transit Administration
FY	Fiscal Year
IAC	Interagency Consultation Group
ITS	Intelligent Transportation Systems
MAP-21	Moving Ahead for Progress in the 21st Century
MATA	Memphis Area Transit Authority
MDOT	Mississippi Department of Transportation
MPO	Metropolitan Planning Organization
SAFETEA-LU	Safe Accountable Flexible Efficient Transportation Equity Act: A Legacy for Users
STIP	Statewide Transportation Improvement Program
TDOT	Tennessee Department of Transportation
MDOT	Mississippi Department of Transportation
TIP	Transportation Improvement Program
Title VI	Title VI of the U.S. Civil Rights Act of 1964, as amended
TPB	Transportation Policy Board

FUNDING TYPES*

BRR	Bridge Replacement and Rehabilitation
CMAQ	Congestion Mitigation & Air Quality
DEMO	Demonstration Funds
ENH	Transportation Enhancement Grant
HPP	High Priority Project
HSIP	Highway Safety Improvement Program
IM	Interstate Maintenance
NHPP	National Highway Performance Program
NHS	National Highway System
SRTS	Safe Routes to Schools
STP	Surface Transportation Program
TAP	Transportation Alternatives Program
TCSP	Transportation, Community, and System Preservation Program
5307	FTA Urbanized Area Formula Program
5310	FTA Enhanced Mobility for Seniors and Individuals
5337	FTA State of Good Repair Program

* For a more detailed description of these funding sources please see **Appendix A**.

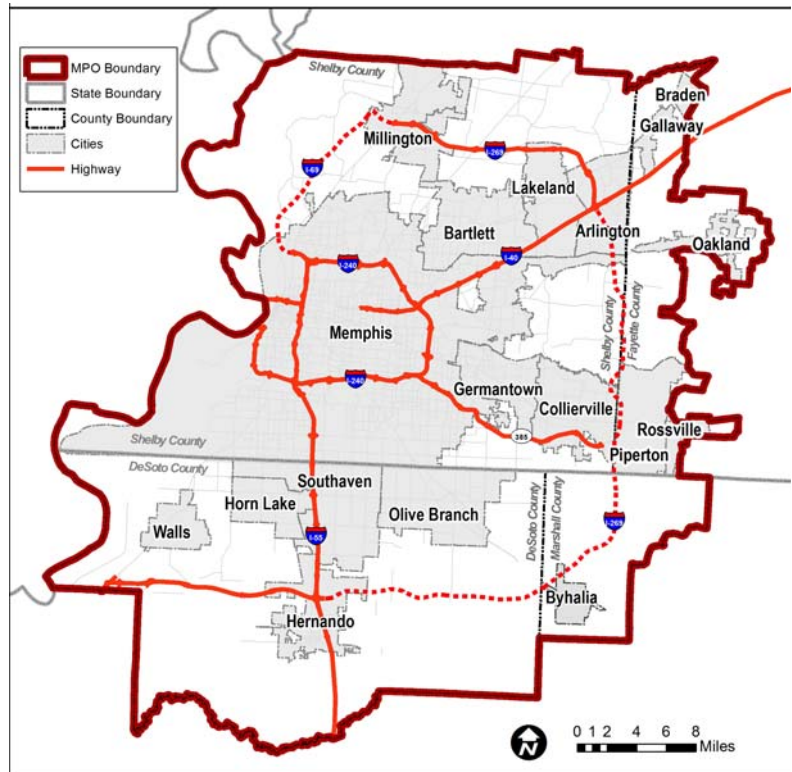
I. MPO OVERVIEW

B. THE MEMPHIS URBAN AREA METROPOLITAN PLANNING ORGANIZATION

The Memphis Urban Area Metropolitan Planning Organization (MPO) was created in 1977 and has the lead responsibility to ensure that the transportation planning process is being carried out in accordance with federal and state regulations. Federal regulations require that an MPO be designated to carry out a comprehensive, continuing and coordinated transportation planning process for urbanized areas (as defined by the U.S. Bureau of Census) with a population of 50,000 or more.

The Memphis MPO is comprised of eighteen cities or towns and four counties as illustrated in **Figure I**. The MPO boundary includes all of Shelby County and a portion of western Fayette County in Tennessee. The boundary also includes all of DeSoto County and a portion of western Marshall County in Mississippi.

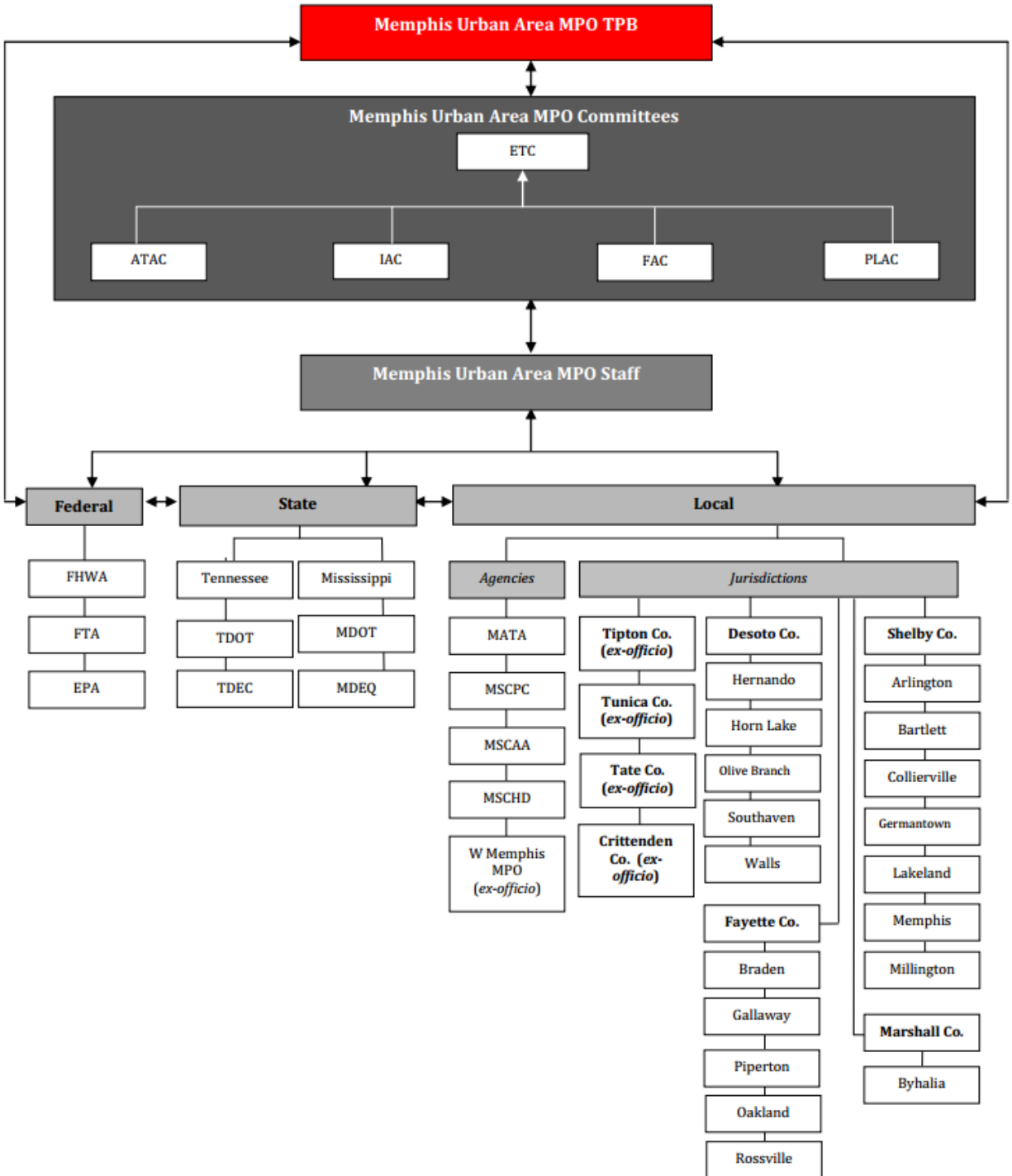
Figure I: Memphis MPO Boundary



The Memphis and Shelby County Department of Regional (DRS) serves as staff for the Memphis MPO under the direction of the MPO's Transportation Policy Board (TPB). The Memphis MPO also has five advisory committees including, Engineering and Technical Committee (ETC), Active Transportation Advisory Committee (ATAC), Interagency Consultation Committee (IAC), Freight Advisory Committee (FAC), and the Planning and Land Use Committee (PLAC). The following **Figure II**, is an organizational chart that shows the role of the different federal, state, regional and local agencies in the Memphis MPO's planning process.

I. MPO OVERVIEW

Figure II: THE MEMPHIS URBAN AREA METROPOLITAN PLANNING ORGANIZATIONAL CHART



II. ABOUT THIS REPORT

A. FEDERAL GUIDANCE

As the designated metropolitan planning organization for the region, the MPO is required by Federal law to prepare a Transportation Improvement Program (TIP) to indicate how the Regional Transportation Plan (RTP) will be implemented. Preparation of the TIP is required by federal legislation known as Moving Ahead for Progress in the 21st Century (MAP-21) and by the Metropolitan Planning Regulations (23CFR 450.324) of the United States Department of Transportation (USDOT). The MPO's current TIP covers the Fiscal Years 2014-17, from October 1, 2013, to September 30, 2017 and provides a prioritized list of multimodal transportation projects within the Memphis MPO area.

As with the previous transportation bill, Safe, Accountable, Flexible, Efficient, Transportation Equity Act: A Legacy for Users (SAFETEA-LU), the current transportation bill, MAP-21, requires the MPOs to publish an annual listing of projects for which funds have been obligated in the preceding year as a record of project delivery and a progress report for public information and disclosure. In addressing MAP-21 requirements, this report lists all transportation projects in the Memphis Area MPO's region that were obligated during Fiscal Year 2015 (October 1, 2014 - September 30, 2015).

The Federal Highway Administration (FHWA) defines obligation as the Federal government's legal commitment to pay or reimburse the States or other entities for the Federal share of a project's eligible costs.¹ An obligated project is one that has been authorized by the federal government and funds have been obligated or approved for reimbursement. For Federal Transit Administration (FTA) projects, obligation occurs when the FTA grant is awarded. For FHWA projects, an obligation takes place when a project agreement is executed and the State/grantee requests that the funds be obligated.

The projects listed in this report have been developed in accordance with FTA/FHWA preliminary guidance. The guidance establishes a framework for developing the information in a user friendly and accessible format. It is the primary responsibility of the MPO to prepare the list, and it is the MPO's Transportation Improvement Program (TIP) that serves as a basis for the information. However, the MPO's TIP identifies projects within the fiscal year that project implementation is anticipated rather than when the project received Federal authorization. Therefore, the obligated list of projects must be developed through a cooperative effort with state and public transportation operators responsible for tracking project authorizations and obligations.

1 Title 23 U.S.C. 134(j)(7)(B), 23 U.S.C. 135(g)(4)(B), 49 U.S.C. 5303(j)(7)(B), and 49 U.S.C. 5304(g)(B) FTA/FHWA Preliminary Guidance on Annual Listing of Obligated Projects – March, 2006

II. ABOUT THIS REPORT

B. TRANSPORTATION IMPROVEMENT PROGRAM

The Transportation Improvement Program (TIP) lists transportation projects over a four year period that will be funded, at least in part, with funds from the FHWA and/or the FTA. The TIP is the mechanism by which projects in the 2040 Regional Transportation Plan (RTP) are built. The TIP provides the opportunity to select projects to implement the transportation planning goals expressed in the MPO's adopted LRTP. In order for a project to be included in the TIP, it must be in one of the fiscally constrained LRTP project lists. The FY 2014-2017 TIP served as a 4-year financially feasible program of transportation improvements.

TIP projects are consistent with federal transportation regulations and accordingly, all TIP projects become part of TDOT's and MDOT's State Transportation Improvement program (STIP). These projects are financially constrained and implementable for each year. The MPO's Transportation Policy Board (TPB) adopted the current FY 2014-17 TIP on September 12, 2013. The TIP is amended/adjusted periodically to add new projects, delete projects, change funding amounts and fiscal years etc. A Memorandum of Agreement between the Memphis MPO and the Tennessee Department of Transportation (TDOT) and the Mississippi Department of Transportation (MDOT) describes the procedures used by the Memphis MPO to process these amendments and adjustments to meet the federal requirements.

The content of the annual listing of projects is consistent with the projects listed in the MPO's TIP. This includes project name and identification numbers, project location, project description, as well as the amount of funds programmed in the TIP. Fund obligations are a measure of the progress being made on a project. As such, the Annual List of Obligated Projects is prepared at the end of the federal fiscal year to identify which projects obligated funding during the fiscal year.

Projects for which funds have been obligated are not necessarily initiated or completed in the program year, and the amount of the obligation will not necessarily equal the total cost of the project. It is possible that obligated funds exceed the amount estimated in the TIP. It is also possible that unused funds may be credited back when not needed at the completion of a project phase resulting in a deobligation.

III. SUMMARY OF 2015 OBLIGATED PROJECTS

A. BY PROJECT TYPE

The MPO tracks the obligated funds for transportation projects within the Memphis MPO area. **Table I** shows the **total obligation for FY 2015 was \$135,128,175.54** with \$69,366,541.52 in Tennessee projects, \$54,013,448.02 in Mississippi projects, and \$11,748,186.00 in transit projects. The obligated funds have increased from FY 2014 when with the total obligation was \$110,752,130.43, with \$78,953,779.43 in Tennessee projects, \$16,519,536.00 in Mississippi projects, and \$15,278,815.00 in transit projects. Note: The increase in obligated funds from FY 2014 to FY 2015 was for Mississippi, specifically bonds for the I-269 project.

Table I: Federal Funding Obligations for All Projects for FY 2014 & 2015

Federally Obligated Projects: FY 2014 & 2015 Comparison		
	2014	2015
Tennessee Projects	\$78,953,779.43	\$69,366,541.52
Mississippi Projects	\$16,519,536.00	\$54,013,448.02
Transit Projects	\$15,278,815.00	\$11,748,186.00
Total Obligation:	\$110,752,130.43	\$135,128,175.54

Figure III on the following page and **Table II** below show the breakdown in funding by project type. Roadway projects received the bulk of federal transportation monies in 2015, totaling \$73,359,941.01 or 54.3% with \$38,615,947.01 in Tennessee and \$34,743,994.00 in Mississippi. Roadway projects were followed by Intelligent Transportation Systems (ITS), signalization, and other safety projects totaling \$35,084,048.78 or 26% with \$20,227,037.78 in Tennessee and \$14,857,011.00 in Mississippi. The next highest category for obligated funds in FY 2015 was transit projects which totaled \$11,748,186.00 or 8.7%. Bridge projects in Mississippi received a total obligation of \$4,412,443.02 or 3.3% while Bridge projects in Tennessee received a total obligation of \$2,647,747.73 or 2.0%. Tennessee bike and pedestrian and enhancement projects had a total obligation of \$7,875,809.00 or 5.8%. A complete list of all of the projects which received obligation and deobligation for FY 2015 are shown in **Table IV** of this document.

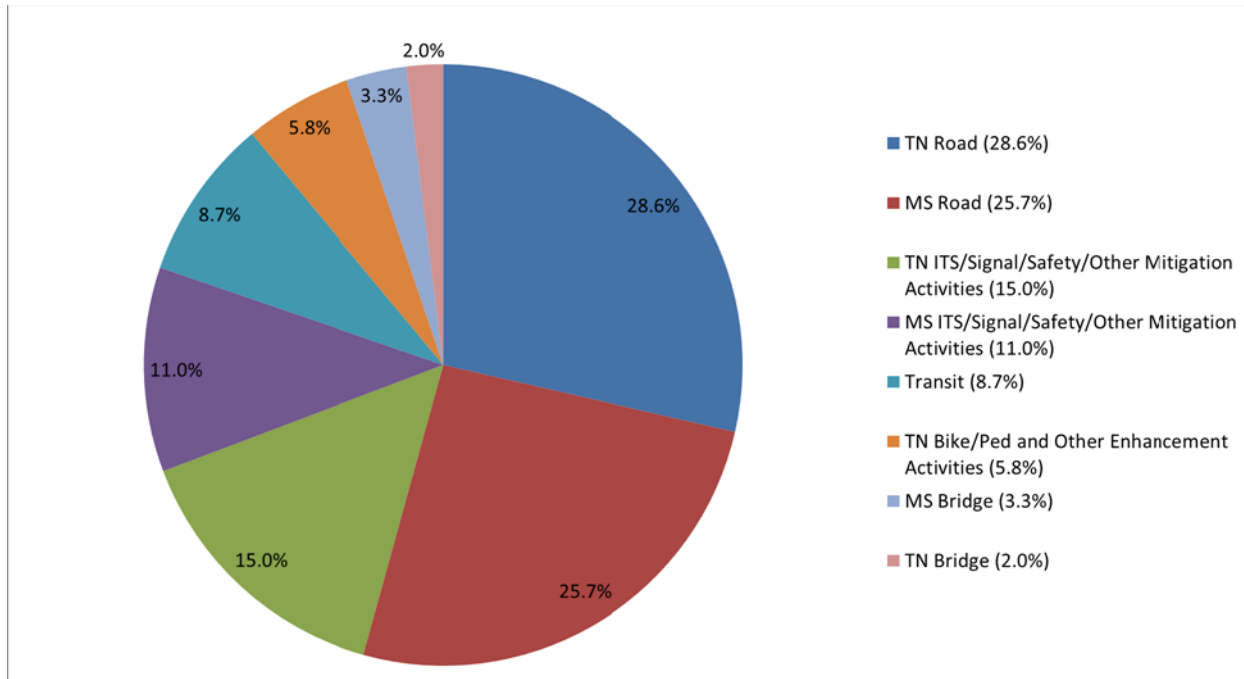
Table II: FY 2015 Obligation Amounts by Project Type for the Memphis MPO:

Tennessee Road Projects:	\$38,615,947.01	28.6%
Mississippi Road Projects:	\$34,743,994.00	25.7%
Tennessee ITS/Signal/Safety and Other Mitigation Projects:	\$20,227,037.78	15.0%
Mississippi ITS/Signal/Safety and Other Mitigation Projects:	\$14,857,011.00	11.0%
Transit Projects	\$11,748,186.00	8.7%
Tennessee Bike/Ped and Other Enhancement Projects:	\$7,875,809.00	5.8%
Mississippi Bridge Projects:	\$4,412,443.02	3.3%
Tennessee Bridge Projects:	\$2,647,747.73	2.0%
Total Obligation:	\$135,128,175.54	100%

* A negative percentage reflects a deobligation.

III. SUMMARY OF 2015 OBLIGATED PROJECTS

Figure III: FY 2015 Obligation Percentages by Project Type for the Memphis MPO



B. BY FUNDING TYPE

Table III and Figure IV on the following page show the breakdown of the funding by the source of the federal funds. Surface Transportation Program (STP) funds received the largest allotment of \$47,845,668.15 or 35.4% of the obligated funds for the Memphis MPO area. The second largest funding source was National Highway Performance Program (NHPP) funds totaling \$25,377,853.81 or 18.8% of the obligated funds for the area. Congestion Mitigation and Air Quality funds had a total obligation of \$18,337,566.76 or 13.6%, Highway Safety Improvement Program (HSIP) funds had a total obligation of \$10,225,473.06 or 7.6%, and 5307 Federal Transit Authority Urbanized Area Formula Program funds had a total obligation of \$10,166,669.00 or 7.5% accounting for the third, fourth, and fifth largest funding sources in the Memphis MPO area.

The following eleven funding sources including the National Highway System (NHS), Earmark, Bridge Replacement and Rehabilitation (BRR), Interstate Maintenance (IM), Transportation Enhancement Grant (ENH), Demonstration Funds (DEMO), Transportation Alternatives Program (TAP), 5337 Federal Transit Authority (FTA) State of Good Repair Program, 5310 FTA Enhanced Mobility for Seniors and Individuals, Transportation, Community, and System Preservation Program (TCSP), and High Priority Projects (HPP) funds combined accounted for 17.2% of the total obligation for the Memphis MPO area. Safe Routes to Schools (SRTS) had deobligations for FY 2015. A complete list of all of the projects which received obligations/deobligations and the associated funding sources for FY 2015 are shown in **Table IV** of this document. **Table IV** also includes the project description, location by county, TIP number, state project number, type of project, funding type, the amount listed in the TIP and the date the funds were made available. Federally funds shown in red are deobligations and are deducted from the total obligated funds for fiscal year 2015.

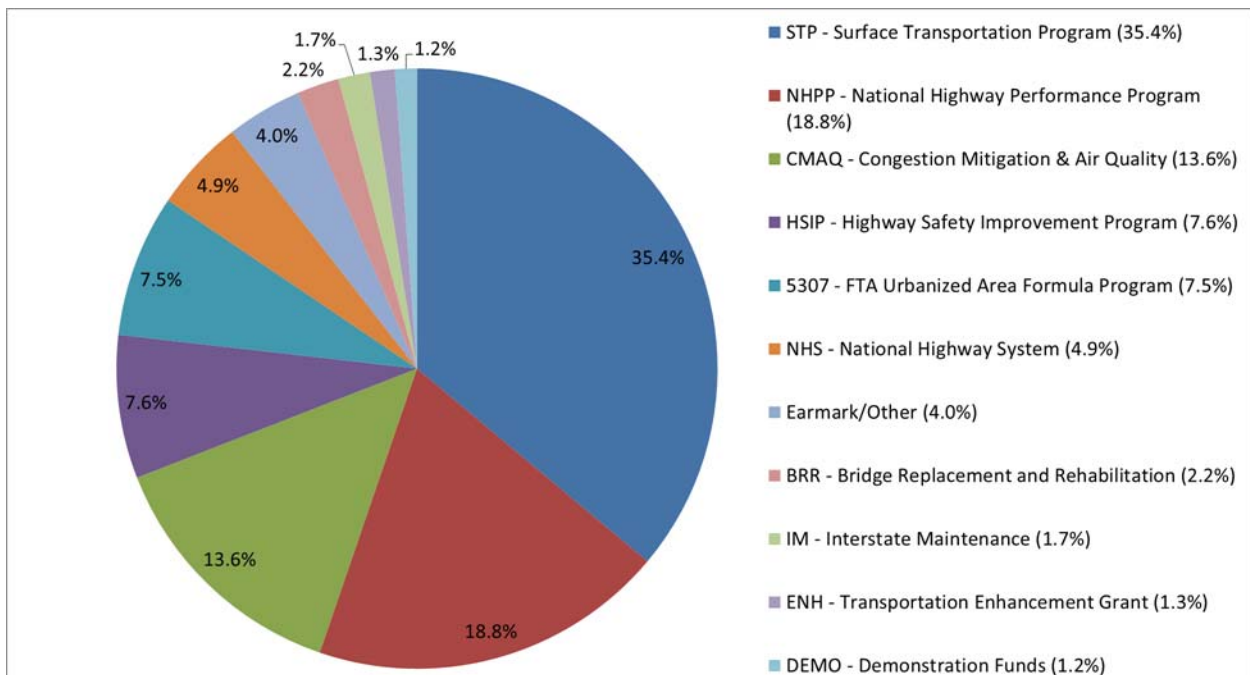
III. SUMMARY OF 2015 OBLIGATED PROJECTS

Table III: FY 2015 Obligation Amounts by Funding Type for the Memphis MPO:

Surface Transportation Program (STP):	\$47,845,668.15	35.4%
National Highway Performance Program (NHPP):	\$25,377,853.81	18.8%
Congestion Mitigation & Air Quality Program (CMAQ):	\$18,337,566.76	13.6%
Highway Safety Improvement Program (HSIP):	\$10,225,473.06	7.6%
5307 Federal Transit Authority Urbanized Area Formula Program:	\$10,166,669.00	7.5%
National Highway System (NHS):	\$6,607,950.37	4.9%
Earmark/ Other:	\$5,378,731.00	4.0%
Bridge Replacement and Rehabilitation (BRR):	\$3,006,150.97	2.2%
Interstate Maintenance (IM):	\$2,258,384.56	1.7%
Transportation Enhancement Grant (ENH)	\$1,765,507.00	1.3%
Demonstration Funds (DEMO):	\$1,567,496.02	1.2%
Transportation Alternatives Program (TAP):	\$940,467.00	0.7%
5337 FTA State of Good Repair Program:	\$875,157.00	0.6%
5310 FTA Enhanced Mobility for Seniors and Individuals:	\$706,360.00	0.5%
Transportation, Community, and System Preservation Program (TCSP):	\$165,000.00	0.1%
High Priority Projects (HPP):	\$1,000.00	0.0%
Safe Routes to Schools (SRTS):	-\$97,259.16	-0.1%
Total Obligation:	\$135,128,175.54	100%

* A negative percentage reflects a deobligation.

Figure IV: FY 2015 Obligation Percentages by Funding Type for the Memphis MPO**



**Figure IV represents funding types with a minimum 1% of the total obligation.

TABLE IV: LIST OF 2015 FEDERALLY OBLIGATED PROJECTS

DATE	PROJECT NUMBER	COUNTY	ROUTE	DESCRIPTION	FUNDING TYPE	TIP/STIP NUMBER	FEDERAL FUNDS OBLIGATED	TOTAL COST IN TIP
ROADWAY PROJECTS - TENNESSEE								
10/01/14	TCSP/STP-M-09TN(3)	Shelby	SR-3	(US-51, Elvis Presley Blvd), From SR-175 (Shelby Dr) to I-55 in Memphis	STP-M	ENH-2010-01	(\$440,000.00)	\$4,500,000.00
10/06/14	STP-M-803(8)	Shelby		Raleigh-Millington Rd, From Amherst Rd to Sykes Rd	STP-M	STP-M-2009-03	\$12,000.00	\$14,593,206.00
10/09/14	STP-M-1456(10)	Shelby		Walnut Grove Rd, From Rocky Point Rd to Houston Levee Rd	STP-M	STP-M-2014-04	\$225,000.00	\$300,000.00
10/09/14	STP-M-57(66)	Shelby, Fayette	SR-57	(US-72), From Eastley St in Shelby County to SR-385 in Fayette County	STP-M	STP-M-2014-01	\$250,000.00	\$312,500.00
10/09/14	STP-M-811(126)	Shelby		Houston Levee Rd, From Wolf River Blvd to Walnut Grove Rd	STP-M	STP-M-2014-03	\$225,000.00	\$300,000.00
10/16/14	STP-M-9417(3)	Shelby		Progress Rd, From Keough Rd to South St in Collierville	STP-M	STP-M-2011-04	(\$5,700.26)	\$3,125,000.00
10/22/14	STP-M-9419(2)	Shelby		Old Brownsville Rd, From SR-14 (Austin Peay Hwy) to Proposed Kirby Whitten Rd in Bartlett	STP-M	STP-M-2006-03	\$2,370,304.00	\$3,000,000.00
10/31/14	NH-I-9409(171)	Shelby		HOV Lanes in Memphis MPO Area (Pavement Marking)	NHPP	TN-IM-2011-04	\$41,405.00	\$650,000.00
10/31/14	NH-I-9409(170)	Shelby		HOV Lanes in Memphis MPO Area (Signs)	NHPP	TN-IM-2011-04	(\$16,777.00)	\$650,000.00
11/14/14	STP-M/EN-NH-3(126)	Shelby	SR-3	(US-51N, Elvis Presley Blvd), From Commercial Pkwy to S of Winchester Rd	STP-M	ENH-2010-01	\$440,000.00	\$4,500,000.00
11/20/14	STP-M-9409(191)	Shelby		Various Roads in Memphis - Group 6	STP-M	STP-M-2009-03	\$55,600.00	\$14,593,206.00
11/24/14	TCSP-12TN(4)	Shelby		Donelson Farms Pkwy, From SR-385 (Proposed I-269) to SR-205 (Airline Rd) in Arlington	TCSP	TCSP-2012-01	\$165,000.00	\$166,000.00
12/01/14	STP-M-1458(11)	Shelby		Macon Rd, From Berryhill Rd to Houston Levee Rd in Memphis	STP-M	STP-M-2014-06	\$262,500.00	\$350,000.00
12/03/14	STP-M-2818(6)	Shelby		Walnut Grove Rd, From I-240 to E of Wolf River Bridge in Memphis	STP-M	STP-M-2011-04	\$6,698.29	\$3,125,000.00
12/03/14	STP-M-2818(6)	Shelby		Walnut Grove Rd, From I-240 to E of Wolf River Bridge in Memphis	BRR-L	--	(\$262,475.03)	--
12/05/14	STP-M-NH-177(36)	Shelby	SR-177	(Germantown Rd), Intersection at Wolf River Blvd	STP-M	STP-M-2014-07	\$80,000.00	\$100,000.00
12/29/14	NH/HSIP-1(342)	Shelby	SR-1	From W of Kentucky St to SR-4	NHPP	TN-NHPP-2014-04	\$842,400.00	\$19,000,000.00
12/29/14	NH/HSIP-4(9)	Shelby	SR-4	(US-78), From SR-3 to SR-1	NHPP	TN-NHPP-2014-04	\$1,221,600.00	\$19,000,000.00
12/29/14	NH-14(55)	Shelby	SR-14	(Austin Peay Hwy), From SR-204 (Singleton Pkwy) to N of Old Covington Pike	NHPP	TN-NHPP-2014-03	\$15,016,800.00	\$21,000,000.00
01/12/15	STP-M-9409(121)	Shelby		Milton Wilson Rd South, From Airline Rd to Chester St	STP-M	STP-M-2011-04	\$2,852.36	\$3,125,000.00
01/13/15	NH-I-240-1(290)	Shelby	I-240	From N of SR-385 (S of Poplar Ave) to N of Walnut Grove Rd	NHS	TN-NHS-2011-01	\$4,375,000.00	\$9,700,000.00
01/16/15	STP-M-NHE-57(53)	Shelby	SR-57	Intersection at Forest-Hill Irene Rd in Germantown	STP-M	STP-M-2011-04	\$12,869.51	\$3,125,000.00
01/21/15	STP-M-5134(10)	Shelby		Raleigh LaGrange Rd, From Macon Rd to Appling Rd	STP-M	STP-M-2009-03	\$10,500.00	\$14,593,206.00
02/06/15	STP-M-1458(10)	Shelby		Macon Rd, From Houston Levee Rd to Pisgah Rd	STP-M	STP-M-2009-03	\$10,500.00	\$14,593,206.00
02/09/15	IME-40-1(335)	Shelby	I-40	From End of Mississippi River Bridge to I-240 Ramp	IM	TN-IM-2011-04	(\$421,427.38)	\$3,457,000.00
02/09/15	NHE-86(4)	Shelby	SR-86	(US-72), From N of Quinn Rd to SR-57 (Poplar Ave) in Collierville	NHS	TN-ES-S-2009-01	\$1,920,000.00	\$20,500,099.00
02/24/15	STP/HSIP-NH-14(58)	Shelby	SR-14	From Trezevant St to I-40 Ramp	STP	TN-STP-2014-01	\$1,816,000.00	\$6,000,000.00
03/11/15	NH-14(55)	Shelby	SR-14	(Austin Peay Hwy), From SR-204 (Singleton Pkwy) to N of Old Covington Pike	NHPP	TN-NHPP-2014-03	\$30,120.00	\$21,000,000.00
03/31/15	STP-NH/HSIP-4(10)	Shelby	SR-4	(US-78), From S of John Paul Dr to SR-277 (Airways Blvd)	STP	TN-STP-2014-01	\$2,049,600.00	\$6,000,000.00
03/31/15	STP-M-1(333)	Shelby	SR-1	(US-70), From SR-385 to W of Airline Rd in Arlington	STP-M	STP-M-2014-09	\$53,600.00	\$87,000.00
04/17/15	STP/HSIP-NH-14(58)	Shelby	SR-14	From Trezevant St to I-40 Ramp	STP	TN-STP-2014-01	\$124,368.00	\$6,000,000.00
04/22/15	STP-NHE-57(36)	Shelby	SR-57	(US-72), From Miller Farms Rd to Dogwood Rd in Germantown	STP	TN-STP-S-2011-01	\$480,000.00	\$5,700,000.00
04/29/15	STP-M-9409(158)	Shelby		Milton Wilson Blvd (Middle), From White Oak Subdivision to Kensington Subdivision	STP-L	STP-L-2011-01	\$4,947.37	\$1,999,708.00
05/06/15	STP-M-9417(10)	Shelby		Various Streets in Collierville	STP-M	STP-M-2009-03	\$88,080.00	\$14,593,206.00
05/12/15	STP-M-9409(77)	Shelby		Kirby-Whitten Pkwy, From Egypt Central Rd to Old Brownsville Rd in Bartlett	STP-M	STP-M-2011-04	\$82,465.91	\$3,125,000.00
05/18/15	STP-M-5431(10)	Shelby		Wolf River Blvd, From SR-177 (Germantown Rd) to Kimbrough Rd and From Farmington Blvd to the Germantown City Limits	STP-M	STP-M-2009-03	\$1,000,000.00	\$14,593,206.00
06/02/15	STP-M-9409(191)	Shelby		Various Roads in Memphis - Group 6	STP-M	STP-M-2009-03	\$346,000.00	\$14,593,206.00
06/02/15	STP-M-803(8)	Shelby		Raleigh-Millington Rd, From Amherst Rd to Sykes Rd	STP-M	STP-M-2009-03	\$20,000.00	\$14,593,206.00
06/08/15	STP-M-9419(5)	Shelby		Yale Rd, From Bartlett Blvd to Old Brownsville Rd in Bartlett	STP-M	STP-M-2009-03	(\$84,428.81)	\$14,593,206.00
06/08/15	NH/HSIP-1(342)	Shelby	SR-1	From W of Kentucky St to SR-4	NHPP	TN-NHPP-2014-04	\$40,388.00	\$42,000,000.00
06/11/15	NC-I-269(15)	Shelby, Fayette	SR-385	SR-385 (Paul Barrett Pkwy), From N of SR-193 (Macon Rd) to SR-205 (Collierville-Arlington Rd), South of SR-15/US-64 (Future I-269)	NHPP	NHS-2008-05	\$332,800.00	\$20,000,000.00
06/11/15	NC-I-269(15)	Shelby, Fayette	SR-385	SR-385 (Paul Barrett Pkwy), From N of SR-193 (Macon Rd) to SR-205 (Collierville-Arlington Rd), South of SR-15/US-64 (Future I-269)	HPP	NHS-2008-05	\$1,000.00	\$20,000,000.00
06/23/15	STP-M-9419(8)	Shelby		Old Brownsville Rd, Bridge over Buckhead Creek/Franks Branch in Bartlett	STP-M	STP-M-2009-03	\$4,000.00	\$14,593,206.00
06/25/15	IR/IM-240-1(220)3	Shelby	I-40/I-24	(Midtown Interchange), From Jefferson Ave to Chelsea Ave	IM	N/A	\$84,836.91	--
06/25/15	STP-M-1(333)	Shelby	SR-1	(US-70), From SR-385 to W of Airline Rd in Arlington	STP-M	STP-M-2014-09	\$54,400.00	\$68,000.00
06/29/15	NH-4(8)	Shelby	SR-4	(US-78), From Mississippi State Line to S of Shelby Dr	NHPP	TN-NHPP-2014-02	\$138,400.00	\$34,000,000.00
06/29/15	DPS-T002(2)*	Fayette, Shelby	SR-86	(US-72), From Mississippi State Line to S of SR-175 (Shelby Dr)	STP	SSTP-2008-09	\$6,933.72	--
07/02/15	DEMO-9409(88)	Shelby		Memphis Airport, Plough Blvd Access Rd in Memphis	DEMO (TN059)	STP-M-2006-04	\$1,000,000.00	\$2,682,450.00
07/15/15	STP-M-175(19)	Shelby	SR-175	(Byhalia Rd), From N of Holmes Rd to N of Winding Ridge Rd in Collierville	STP-M	STP-M-2009-03	(\$82,711.68)	\$14,593,206.00
07/21/15	TN-I-69(48)	Shelby	I-69PROP	From S of Fite Rd to 0.5 mi N of Woodstock-Cuba Rd	DEMO (TN055)	N/A	(\$102,648.98)	--
07/21/15	STP-M-9419(8)	Shelby		Old Brownsville Rd, Bridge over Buckhead Creek/Franks Branch in Bartlett	STP-M	STP-M-2009-03	(\$36,000.00)	\$14,593,206.00
07/27/15	STP-M-9409(169)	Shelby		Six City Streets in Memphis - South Prescott St, East Brooks Rd, Horn Lake Rd, Neely Rd, Front St and East St	STP-M	STP-M-2009-03	\$3,370,569.00	\$14,593,206.00
07/30/15	STP-M-2734(10)	Shelby		Airline Rd, From I-40 to N of Milton Wilson Blvd in Arlington	STP-M	STP-M-2014-10	\$39,930.00	\$35,000.00
08/03/15	STP-NH/HSIP-4(10)	Shelby	SR-4	(US-78), From S of John Paul Dr to SR-277 (Airways Blvd)	STP	TN-STP-2014-01	(\$526,221.00)	\$6,000,000.00
08/07/15	STP-M-9409(133)	Shelby		Resurfacing of Various Streets in Memphis 2	STP-M	STP-M-2009-03	(\$207,841.21)	\$14,593,206.00
08/17/15	STP-M-803(8)	Shelby		Raleigh-Millington Rd, From Amherst Rd to Sykes Rd	STP-M	STP-M-2009-03	\$506,800.00	\$14,593,206.00
08/20/15	IM/NH-I-55-1(119)	Shelby	I-55	Interchange at Crump Blvd	NHPP	TN-IM-2011-01	\$941,013.81	\$35,700,000.00
08/20/15	IM/NH-I-55-1(119)	Shelby	I-55	Interchange at Crump Blvd	IMD	TN-IM-2011-01	\$421,896.48	\$1,044,910.00
09/16/15	STP-M-9409(183)	Shelby		Various Roads in Memphis - Group 5	STP-M	STP-M-2009-03	\$220,000.00	\$14,593,206.00
TOTAL:							\$38,615,947.01	

ROADWAY PROJECTS - MISSISSIPPI

11/05/14	100222/0554(096)	DeSoto	I-55	I-55 from Church Rd to SR 302 - Widen to 6 lanes	Earmark			\$4,000,000.00	
12/04/14	501561/0290(100)	DeSoto/Marshall	I-269/MS 304	Bond Project for I-269/MS 304 from I-55 to Tennessee SL	STP			\$20,096,985.00	
12/19/14	501561/0290(100)	DeSoto/Marshall	I-269/MS 304	Bond Project for I-269/MS 304 from I-55 to Tennessee SL	STP			\$375,475.00	
01/20/15	104574LPA/0194(501)	DeSoto		City of Southaven - Getwell Rd from SR 302 to State Line Rd - Add Lanes	STP	MS-LSTP-2002-02		\$16,214.00	
03/09/15	106492LPA/0017(037)	DeSoto		City of Horn Lake - Tulane Rd Connector Project	STP	MS-LSTP-2012-02		\$8,718.00	
03/16/15	106364/0096(016)	DeSoto		Hwy 61 - Beginning .1 mi S of SR 9 and going N approx 10 mi to MS/TN SL - Overlay	NHS			(\$4,332.00)	
03/17/15	105791/0554(070)	DeSoto	I-55	I-55 from the Panola CL to 2.421 mi N of Tate/DeSoto CL. Re-establish clear zone & Med Barrier	NHS			(\$288,572.00)	
03/17/15	105791/0554(070)	DeSoto	I-55	I-55 from the Panola CL to 2.421 mi N of Tate/DeSoto CL. Re-establish clear zone & Med Barrier	DRTD			(\$118,867.00)	
03/20/15	101427/0312(001)	DeSoto	SR-305	SR 305 from Lewisburg to US 78, PE & ROW - construct 5 lanes	STP			(\$1,142.00)	
03/20/15	101427/0312(001)	DeSoto	SR-305	SR 305 from Lewisburg to US 78, PE & ROW - construct 5 lanes	STP			(\$1.00)	
03/20/15	100222/0554(076)	DeSoto	I-55	I-55 from relocated SR 304 to Church Road - Add 2 lanes - ROW	Earmark	MS-NHS-2006-02		(\$468,000.00)	
03/20/15	101427/0312(001)	DeSoto	SR-305	SR 305 from Lewisburg to US 78, PE & ROW - construct 5 lanes	Equity Bonus			(\$38,152.00)	
04/13/15	106871LPA/7861(005)	DeSoto		City of Southaven - Getwell Rd from Church Rd to Goodman Rd - Resurfacing	STP	MS-LSTP-2014-04		(\$128,641.00)	
05/29/15	100222/0554(096)	DeSoto	I-55	I-55 from Church Rd to SR 302 - Widen to 6 lanes	Earmark			\$1,000,000.00	
06/03/15	106814LPA/0109(007)	DeSoto		City of Hernando - Commerce Street and Nesbit Rd - Resurfacing	STP	MS-LSTP-2014-04		\$66,539.00	
06/02/15	501561/0290(100)	DeSoto/Marshall	I-269/MS 304	Bond Project for I-269/MS304 from I-55 to Tennessee SL	STP			\$7,538,400.00	
06/24/15	106917/9227(007)	DeSoto		Nail Road - Hydraulic Study	STP	MS-LSTP-2014-06		\$225,000.00	
08/03/15	106814LPA/0109(007)	DeSoto		City of Hernando - Commerce Street and Nesbit Rd - Resurfacing	STP	MS-LSTP-2014-04		(\$50,334.00)	
08/03/15	102556/0292(012)	DeSoto/Marshall	I-269/MS 304	SR 304/I-269 from I-55 to Tennessee SL [incl interchange] PE for design of new construction	STP			\$470,000.00	
09/08/15	100222/0554(050)	DeSoto	I-55	I-55 from Hernando to Tennessee SL. PE, ROW & CONSTR for add'l lanes	CMAQ			\$1,053.00	
09/08/15	100222/0554(050)	DeSoto	I-55	I-55 from Hernando to Tennessee SL. PE, ROW & CONSTR for add'l lanes	CMAQ			\$5,004.00	
09/08/15	100222/0554(050)	DeSoto	I-55	I-55 from Hernando to Tennessee SL. PE, ROW & CONSTR for add'l lanes	CMAQ			\$210,916.00	
09/08/15	100222/0554(050)	DeSoto	I-55	I-55 from Hernando to Tennessee SL. PE, ROW & CONSTR for add'l lanes	STP			\$212,536.00	
09/15/15	100222/0554(096)	DeSoto	I-55	I-55 from Church Road to SR 302 - Widen to 6 lanes - ROW	Earmark			\$1,000,000.00	
09/21/15	106751SA/0915(009)	Marshall		Base repair, leveling, overlay on Victoria Cayce Rd approx 2.5 miles	STP			\$550,240.00	
09/22/15	107081LPA/9227(008)	DeSoto		City of Horn Lake - Nail Rd - Mill & Overlay	STP	MS-LSTP-2014-04		\$19,955.00	
09/22/15	106720/9992(253)	DeSoto	I-55	2015 Design Build Bridge Widening Project on I-55 - PE	NHS			\$45,000.00	
TOTAL:								\$34,743,994.00	

BRIDGE PROJECTS - TENNESSEE

10/01/14	BRZE-9409(85)	Shelby		Holmes St, Bridge over CSX R/R, LM 1.09 in Memphis	BRR-L	BRR-L-2008-05		(\$314,695.14)	\$3,500,000.00
10/22/14	BR-STP-2807(4)	Shelby		South Pkwy, Bridge over ICG R/R and Patton St, LM 1.17 in Memphis	BRR-S	BRR-S-2008-02		(\$23,071.15)	\$250,000.00
11/17/14	HSIP-NHE-3(112)	Shelby	SR-3	(US-51), From N of Wolf River (Overflow Bridge) To Overflow Bridge	HSIP	HSIP-2008-01		(\$4,983.90)	\$8,000,000.00
01/21/15	STP-M-9419(6)	Shelby		Bartlett Rd, Bridge over Harrington Creek in Bartlett	STP-M	STP-M-2014-12		\$152,000.00	\$5,689,750.00
01/21/15	STP-M-9420(7)	Shelby		McVay Rd, From McVay Cove to Messick Rd in Germantown	STP-M	STP-M-2014-12		\$32,000.00	\$5,689,750.00
02/09/15	BR-STP-14(37)	Shelby	SR-14	(US-61), From South Pkwy to McLemore Ave (Ravine, LM 9.51 & I.C. R/R, LM 9.68) in Memphis	BRR-S	TN-BRR-S-2011-01		\$2,160,000.00	\$28,000,000.00
03/30/15	ARRA/BRZE-9409(156)	Shelby		Holmes St, Bridge over CSX R/R, LM 1.09 in Memphis	BRR-L	BRR-L-2011-02		(\$46,390.01)	\$40,000.00
03/31/15	STP-M-205(20)	Shelby		Airline Rd, Bridge over Hall Creek in Arlington	STP-M	STP-M-2011-01		\$62,380.65	\$175,000.00
04/22/15	BH-I-40-1(326)	Shelby	I-40	Bridge over Mississippi River (Seismic Retrofit Phase 8)	BRR-S	TN-IM-2010-02		\$432,000.00	\$32,500,000.00
05/07/15	BR-NH-14(46)	Shelby	SR-14	Bridge over CNIC R/R and Noncannah Creek, LM 7.13 SBL	NHPP	TN-NHPP-2014-04		\$800,000.00	\$42,000,000.00
07/21/15	STP-M-9419(6)	Shelby		Bartlett Rd, Bridge over Harrington Creek in Bartlett	STP-M	STP-M-2014-12		\$100,000.00	\$5,689,750.00
07/27/15	STP-M-205(20)	Shelby		Airline Rd, Bridge over Hall Creek in Arlington	STP-M	STP-M-2011-01		\$231,104.00	\$361,100.00
08/25/15	STP-M-I-40-1(323)	Shelby	I-40	Mississippi River Bridge (Third Crossing)	STP-M	STP-M-2009-07		(\$1,820,134.05)	\$5,550,000.00
08/31/15	STP-M-803(10)	Shelby		Raleigh-Millington Rd, Bridge over Big Creek in Millington	STP-M	STP-M-2014-12		\$120,000.00	\$5,689,750.00
08/31/15	BR-NH-57(35)	Shelby	SR-57	Bridges over SR-23, CSXT & IC R/R, Union Pacific R/R and Scott St, LM 1.88 in Memphis	BRR-S	BRR-S-2008-01		\$308,281.28	\$28,000,000.00
09/14/15	STP-M-9409(186)	Shelby		11 Bridges at Various Locations in Memphis	STP-M	STP-M-2014-12		\$345,456.00	\$5,689,750.00
09/15/15	BR-STP-1(283)	Shelby	SR-1	(US-70), Bridge over Loosahatchie River, LM 30.36	STP	TN-STP-2014-01		\$113,800.05	\$6,000,000.00
TOTAL:								\$2,647,747.73	

BRIDGE PROJECTS - MISSISSIPPI

10/22/14	105333/0603(020)	Marshall	SR-4	SR 4 Replace Bridge over Burlington Northern RR - PE for Design & Row	BRR			\$107,206.02	
11/19/14	105333/0603(020)	Marshall	SR-4	SR 4 Replace Bridge over Burlington Northern RR - PE for Design & ROW	STP			\$350,000.00	
11/20/14	103318AARA/0311(018)	DeSoto	SR-305	SR 305 from Cockrum to Lewisburg, Bridge # 14.9, 15.2, 15.3, 15.6. Replace Bridges	STP			\$19,462.00	
03/31/15	106719/2910(007)	Marshall	SR-178	SR 178 - Deck Replacement Bridge #35.4 - Emergency Repair	BRR			(\$1,105.00)	
06/01/15	100299/0914(008)	Marshall	SR-309	SR 309 between SR 4 & US 78 - Bridge replacement - Env & ROW	STP			\$417,600.00	
06/22/15	100299/0914(007)	Marshall	SR-309	SR 309 between US 78 and Barton - Bridge Replacement - ROW & CONSTR	STP			\$3,000,000.00	
06/30/15	100299/0914(008)	Marshall	SR-309	SR 309 between SR 4 & US 78 - Bridge replacement - Env & ROW	STP			(\$417,600.00)	
07/27/15	106918/9992(252)	DeSoto		2015 Bridge Preventative Maintenance Project - Joint Repair	STP			\$512,000.00	
09/15/15	106918/9992(252)	DeSoto		2015 Bridge Preventative Maintenance Project - Joint Repair	STP			(\$221,520.00)	
09/24/15	102207/0603(021)	Marshall	SR-4	SR 4 replace bridge #59.0 & 59.2	BRR			\$646,400.00	
TOTAL:								\$4,412,443.02	

ITS/SIGNAL/SAFETY & OTHER MITIGATION PROJECTS - TENNESSEE

10/01/14	CM-7900(47)	Shelby		Various Locations in Shelby County - Set 4	CMAQ-M	CMAQ-2002-09		\$2,000,000.00	\$18,406,327.00
10/03/14	HSIP-R00S(162)	Shelby		Kyle St at Norfolk Southern R/R in Memphis	HSIP	TN-HSIP-2011-01		(\$4,837.97)	\$8,000,000.00
10/03/14	HSIP-R00S(76)	Shelby		Forest Hill-Irene Rd at NSR, LM 4.69 in Germantown	HSIP	HSIP-2008-01		\$32,000.00	\$8,000,000.00
10/06/14	HSIP-2807(7)	Shelby		South Parkway East, Intersection at Cummings St	HSIP	TN-HSIP-2014-01		\$9,882.00	\$6,000,000.00
10/06/14	SRTS-9409(112)	Shelby		Frayer Elementary School	SRTS	SRTS-2008-01		(\$96,900.16)	\$441,083.00

10/09/14	HSIP-23(10)	Shelby	SR-23	From Flicker Ave to Tillman St in Memphis (RSAR)	HSIP	TN-HSIP-2014-01	\$36,000.00	\$6,000,000.00
10/09/14	HSIP-15(189)	Shelby	SR-15	Intersection at Bartlett Blvd, LM 3.39 in Bartlett (RSAR)	HSIP	TN-HSIP-2014-01	\$36,000.00	\$6,000,000.00
10/09/14	HSIP-57(65)	Shelby	SR-57	(US-72), From Yates Rd to Ridgeway Loop Rd in Memphis (RSAR)	HSIP	TN-HSIP-2014-01	\$36,000.00	\$6,000,000.00
10/09/14	HSIP-2814(7)	Shelby		Perkins Rd, Intersection at I-240 Westbound Ramps, LM 3.14 in Memphis (RSAR)	HSIP	TN-HSIP-2014-01	\$36,000.00	\$6,000,000.00
10/21/14	STP-H-14(53)	Shelby	SR-14	(Austin Peay Hwy), From SR-204 to Tipton County Line (RSA)	STP	TN-STP-2014-01	\$997,200.00	\$6,000,000.00
10/23/14	HSIP-2825(3)	Shelby		Getwell Rd, Intersection at I-240 Westbound Ramps (RSAR)	HSIP	TN-HSIP-2014-01	\$9,000.00	\$6,000,000.00
10/23/14	HSIP-2863(10)	Shelby		Mill Branch Rd, Intersection at Nonconnah Blvd (RSAR)	HSIP	TN-HSIP-2014-01	\$9,000.00	\$6,000,000.00
11/18/14	HSIP-I-55-1(131)	Shelby	I-55	(US-61), Interchange at E.H. Crump Blvd in Memphis (Ramp Queue Study)	HSIP	TN-HSIP-2014-01	\$36,000.00	\$6,000,000.00
11/18/14	HSIP-14(59)*	Shelby	SR-14	(Austin Peay Hwy), Intersection at SR-205 (Millington-Arlington Rd), LM 32.89	HSIP	TN-HSIP-2014-01	\$36,000.00	\$6,000,000.00
11/20/14	STP-NHE-9900(5)	Shelby		Freeway Service Patrols	STP	TN-STP-S-2011-05	\$395,273.30	\$4,130,628.00
11/20/14	STP-NHE-9900(5)	Shelby		Freeway Service Patrols	NHS	TN-STP-S-2011-05	(\$448,245.63)	\$5,188,040.00
11/26/14	HSIP-2875(4)	Shelby		Sycamore View Rd, From near Shelby Oaks Dr to SR-1 (Summer Ave) in Memphis (RSAR)	HSIP	TN-HSIP-2014-01	\$36,000.00	\$6,000,000.00
12/29/14	HSIP-2827(4)	Shelby		Macon Rd, Intersection at Berclair Rd in Memphis	HSIP	TN-HSIP-2014-01	\$22,000.00	\$6,000,000.00
12/29/14	NH/HSIP-1(342)	Shelby	SR-1	From W of Kentucky St to SR-4	HSIP	TN-HSIP-2014-01	\$149,400.00	\$6,000,000.00
12/29/14	NH/HSIP-4(9)	Shelby	SR-4	(US-78), From SR-3 to SR-1	HSIP	TN-HSIP-2014-01	\$97,000.00	\$6,000,000.00
12/30/14	HSIP-205(23)	Shelby	SR-205	From SR-14 to Armour Rd/Fullerton Rd (RSAR)	HSIP	TN-HSIP-2014-01	\$401,000.00	\$6,000,000.00
01/08/15	CM-STP-9409(116)	Shelby		Shelby County Air Quality Programs - Ozone Alert Days	CMAQ	CMAQ-2008-06	(\$466,071.98)	\$1,000,000.00
01/16/15	HSIP-14(59)*	Shelby	SR-14	(Austin Peay Hwy), Intersection at SR-205 (Millington-Arlington Rd), LM 32.89	HSIP	TN-HSIP-2014-01	(\$36,000.00)	\$6,000,000.00
01/22/15	STP/HSIP-R-2861(3)	Shelby		East McLemore Ave at BNSF R/R, LM 6.52 in Memphis	HSIP	TN-HSIP-2014-01	\$93,660.00	\$6,000,000.00
01/30/15	STP/HSIP-R-2883(2)	Shelby		Democrat Rd at BNSF R/R, LM 0.33 in Memphis	HSIP	TN-HSIP-2014-01	\$38,056.00	\$6,000,000.00
02/03/15	STP-M-9409(124)	Shelby		Various Locations in Memphis (Install Guardrail and Impact Attenuators)	STP-M	STP-M-2009-05	(\$10,000.00)	\$1,378,200.00
02/24/15	STP/HSIP-NH-14(58)	Shelby	SR-14	From Trezevant St to I-40 Ramp	HSIP	TN-HSIP-2014-01	\$249,000.00	\$6,000,000.00
03/09/15	NH-ITS/OCC4-FY14(7)	Shelby		Memphis ITS Control Center - FY 2014-2016 (Operations)	NHPP	TN-NHPP-2014-04	\$585,600.00	\$42,000,000.00
03/10/15	NH-FSP4-FY14(8)	Shelby		Memphis Freeway Service Patrol (Help Trucks) FY 2014-2016	NHPP	TN-NHPP-2014-04	\$2,270,664.00	\$42,000,000.00
03/10/15	NH-ITS/UPC4-FY14(9)	Shelby		Memphis ITS Control Center - FY 2014-2016 (Utilities, Power, and Communications)	NHPP	TN-NHPP-2014-04	\$316,800.00	\$42,000,000.00
03/13/15	CM-7900(51)	Shelby		Various Locations in Shelby County - Set 9	CMAQ-M	CMAQ-2002-09	\$1,909,000.00	\$18,406,327.00
03/17/15	STP-H-14(53)	Shelby	SR-14	(Austin Peay Hwy), From SR-204 to Tipton County Line (RSA)	STP	TN-STP-2014-01	\$211,130.00	\$6,000,000.00
03/18/15	HSIP-205(23)	Shelby	SR-205	From SR-14 to Armour Rd/Fullerton Rd (RSAR)	HSIP	TN-HSIP-2014-01	(\$7,236.00)	\$6,000,000.00
03/20/15	HSIP-2825(3)	Shelby		Getwell Rd, Intersection at I-240 Westbound Ramps (RSAR)	HSIP	TN-HSIP-2014-01	(\$9,000.00)	\$6,000,000.00
03/25/15	HSIP-R00S(42)	Shelby		Castalia St at BNSF R/R, LM 0.47 in Memphis	HSIP	HSIP-2008-01	(\$42,572.14)	\$8,000,000.00
03/25/15	HSIP-803(9)	Shelby		Raleigh-Millington Rd, From James Boyd Rd to Church St (RSAR)	HSIP	TN-HSIP-2014-01	\$4,500.00	\$6,000,000.00
03/25/15	HSIP-23(11)	Shelby	SR-23	near the Intersection at White Station Rd in Memphis	HSIP	TN-HSIP-2014-01	\$36,000.00	\$6,000,000.00
03/27/15	HSIP-R-5182(10)	Shelby		Castalia St at BNSF R/R, LM 0.46 in Memphis	HSIP	TN-HSIP-2014-01	\$4,500.00	\$6,000,000.00
03/31/15	HSIP-205(25)*	Shelby	SR-205	From SR-57 to S of SR-15	HSIP	TN-HSIP-2014-01	\$399,000.00	\$6,000,000.00
03/31/15	STP-NH/HSIP-4(10)	Shelby	SR-4	(US-78), From S of John Paul Dr to SR-277 (Airways Blvd)	HSIP	TN-HSIP-2014-01	\$297,900.00	\$6,000,000.00
04/08/15	NH-098-4(18)	Shelby		Memphis ITS System Maintenance (June 1, 2015 - June 30, 2018)	NHPP	TN-NHPP-2014-04	\$2,818,640.00	\$42,000,000.00
04/09/15	CM-STP-9409(50)	Shelby		Signalization Throughout the City of Memphis	CMAQ-M	CMAQ-2002-09	(\$246,891.26)	\$18,406,327.00
04/13/15	CM-7900(43)	Shelby		Various Locations in Shelby County - Set 1	CMAQ-M	CMAQ-2002-09	(\$185,421.00)	\$18,406,327.00
04/13/15	CM-7900(42)	Shelby		Various Locations in Shelby County, Detection Upgrade - Set 3	CMAQ-M	CMAQ-2002-09	(\$72,942.00)	\$18,406,327.00
04/17/15	STP/HSIP-NH-14(58)	Shelby	SR-14	From Trezevant St to I-40 Ramp	HSIP	TN-HSIP-2014-01	(\$755.00)	\$6,000,000.00
04/21/15	STP/HSIP-R-5056(10)	Shelby		Pilot Dr at BNSF R/R, LM 4.13 in Memphis	HSIP	TN-HSIP-2014-01	\$4,000.00	\$6,000,000.00
04/29/15	HSIP-7900(53)*	Shelby		Various Local Roads in Shelby County (Local Roads Safety Initiative)	HSIP	TN-HSIP-2014-01	\$36,000.00	\$6,000,000.00
05/14/15	CM-7900(49)	Shelby		Various Locations Throughout Shelby County - Set 7	CMAQ-M	CMAQ-2002-09	\$1,760,000.00	\$18,406,327.00
05/14/15	CM-NH-14(54)	Shelby	SR-14	(US-61, Third St), From Mitchell Rd to Linden Ave - Set 10	CMAQ-M	CMAQ-2002-09	\$1,920,000.00	\$18,406,327.00
05/14/15	STP/HSIP-R-2824(7)	Shelby		Highland Rd at Norfolk Southern R/R, LM 2.68 in Memphis	HSIP	TN-HSIP-2014-01	\$346,472.00	\$6,000,000.00
05/26/15	STP-M-803(5)	Shelby		Church St, Intersection at Navy Rd in Millington	STP-M	STP-M-2009-09	\$163,000.00	\$203,750.00
06/08/15	NH/HSIP-1(342)	Shelby	SR-1	From W of Kentucky St to SR-4	HSIP	TN-HSIP-2014-01	\$27,255.00	\$6,000,000.00
06/17/15	HSIP-R00S(55)	Shelby		Poplar Pike at Norfolk Southern R/R, LM 3.63 in Germantown	HSIP	99220	(\$632.01)	\$79,848,243.00
06/25/15	STP/HSIP-R-175(21)	Shelby	SR-175	at BNSF R/R, LM 12.41 in Memphis	HSIP	TN-HSIP-2014-01	\$581,750.00	\$6,000,000.00
06/29/15	HSIP-R-5182(10)	Shelby		Castalia St at BNSF R/R, LM 0.46 in Memphis	HSIP	TN-HSIP-2014-01	\$1,147,916.00	\$6,000,000.00
07/01/15	HSIP-2814(7)	Shelby		Perkins Rd, Intersection at I-240 Westbound Ramps, LM 3.14 in Memphis (RSAR)	HSIP	TN-HSIP-2014-01	(\$36,000.00)	\$6,000,000.00
07/02/15	CM-STP-9409(117)	Shelby		Shelby County Air Quality Programs - Air Quality Outreach	CMAQ-M	CMAQ-2008-02	\$395,878.00	\$494,847.00
07/09/15	HSIP-57(65)	Shelby	SR-57	(US-72), From Yates Rd to Ridgeway Loop Rd in Memphis (RSAR)	HSIP	TN-HSIP-2014-01	(\$36,000.00)	\$6,000,000.00
07/09/15	HSIP-14(60)*	Shelby	SR-14	(Austin Peay Hwy), Intersection at SR-205 (Millington-Arlington Rd), LM 32.89	HSIP	TN-HSIP-2014-01	\$36,000.00	\$6,000,000.00
07/21/15	CM-23(12)	Shelby	SR-23	From Memphis City Limits to Tillman St	CMAQ-M	CMAQ-2014-04	\$156,891.00	\$610,000.00
08/03/15	STP-NH/HSIP-4(10)	Shelby	SR-4	(US-78), From S of John Paul Dr to SR-277 (Airways Blvd)	HSIP	TN-HSIP-2014-01	\$9,680.00	\$9,500,000.00
08/03/15	STP-M-4384(5)	Shelby		Altruria Rd, Intersection at Memphis-Arlington Rd in Bartlett	STP-M	STP-M-2009-06	\$260,000.00	\$5,911,376.00
08/05/15	CM-7900(50)	Shelby		Various Locations Throughout Shelby County - Set 8	CMAQ-M	CMAQ-2002-09	(\$516,386.00)	\$18,406,327.00
08/07/15	CM-FSP4-FY15(2)	Shelby		Memphis Freeway Service Patrol (Help Trucks) Program Expansion FY 2015	CMAQ-S	CMAQ-2015-02	\$773,589.00	\$966,986.00
08/20/15	CM-9409(192)	Shelby		Memphis Heavy Duty CNG Truck Deployment (Dillon Transport)	CMAQ-S	CMAQ-2014-03	\$500,000.00	\$3,953,845.00
08/21/15	HSIP-388(4)	Shelby	SR-388	From SR-3 (US-51) to Locke Cuba Rd	HSIP	TN-HSIP-2011-01	(\$538.48)	\$8,000,000.00
08/21/15	HSIP-177(31)	Shelby	SR-177	From Winchester Rd to Crestridge Rd	HSIP	TN-HSIP-2011-01	\$5,750.56	\$8,000,000.00
08/25/15	CM-7900(47)	Shelby		Various Locations in Shelby County - Set 4	CMAQ-M	CMAQ-2002-09	(\$1,137,252.00)	\$18,406,327.00
08/28/15	IM/NH-098-4(17)	Shelby		Memphis ITS System Maintenance (July 2012 - December 2014)	IM	NHS-2002-03B	\$241.41	\$2,940,000.00
08/28/15	IM/NH-098-4(17)	Shelby		Memphis ITS System Maintenance (July 2012 - December 2014)	NHS	NHS-2002-03B	\$1,009,100.00	\$700,000.00
08/28/15	HSIP-205(23)	Shelby	SR-205	From SR-14 to Armour Rd/Fullerton Rd (RSAR)	HSIP	TN-HSIP-2014-01	(\$38,746.00)	\$9,500,000.00
09/14/15	HSIP-1(354)*	Shelby	SR-1	From I-55 to Kentucky St (RSAR)	HSIP	TN-HSIP-2014-01	\$36,000.00	\$9,500,000.00
09/15/15	IM-098-4(8)	Shelby		Intelligent Transportation System (ITS) Memphis (Major Phase)	IM	TN-IM-2011-02	\$346,737.14	\$4,220,000.00
09/16/15	STP-M-NH-14(56)	Shelby	SR-14	(Jackson Ave) at Various Intersections in Memphis - Group 1	STP-M	STP-M-2009-06	\$295,000.00	\$5,911,376.00
11/07/14	HSIP-2823(4)	Shelby		New Allen Rd, Intersection at Ridgemont Rd, LM 6.19	HSIP	HSIP-2008-01	\$200,000.00	\$8,000,000.00

TOTAL: \$20,227,037.78

ITS/SIGNAL/SAFETY & OTHER MITIGATION PROJECTS - MISSISSIPPI

02/11/15	106798/9227006	DeSoto		Nail Road near Horn Lake - Upgrade RR - Signals & Gates - GYRI RR - DOT# 309 668A	Rails			\$3,750.00	
02/28/15	105682LPA/109005	DeSoto		City of Hernando - Safety activities at Oak Grove Elem School	SRSF			(\$359.00)	
03/27/15	106779/211062	DeSoto	MS-302	MS 302 from Allen Drive to Horn Lake Rd. PE for raised median and signal upgrades	HSIP			\$135,000.00	
04/28/15	104911/2920008	DeSoto	US-51	US 51 @ Star Landing Rd - Traffic Signal & Intersection Improvements - PE, ROW & CONSTR	HSIP			\$2,642,580.00	
06/16/15	104911/2920008	DeSoto	US-51	US 51 @ Star Landing Rd - Traffic Signal & Intersection Improvements - PE, ROW & CONSTR	HSIP			\$3,420.00	
08/03/15	107037/554099	DeSoto	I-55	I-55 NB & SB Exit Ramps at Hwy 302 - PE	HSIP			\$360,000.00	
08/07/15	107100/61089	DeSoto	US-78	US 78 from Craft Road to Hacks Cross Rd - Installation of Proper Super-elevation in WB Lanes	HSIP			\$360,000.00	
08/18/15	105285LPA/7887001	DeSoto		City of Hernando - Traffic signal installation & intersection improvement @ Byhalia & McIngvale Rd	STP	MS-LSTP-2014-05		(\$17,876.00)	
09/09/15	105249/211059	DeSoto	MS-302	MS 302 & US 51 - Active Traffic Signal Management	CMAQ			\$41,000.00	
09/11/15	105249/9992251	DeSoto		Intelligent Transportation System (ITS) Long Range Plan	CMAQ			\$31,200.00	
09/16/15	107100/61089	DeSoto	US-78	US 78 from Craft Rd to Hacks Cross Rd - Installation of Proper Super-elevation in WB Lanes	HSIP			\$223,717.00	
09/16/15	107100/61089	DeSoto	US-78	US 78 from Craft Rd to Hacks Cross Rd - Installation of Proper Super-elevation in WB Lanes	HSIP			\$881,933.00	
09/21/15	106779/211061	DeSoto	SR-302	SR 302 from I-55 to the Marshall CL - Intersection Improvements	HSIP			\$278,788.00	
09/21/15	106779/211061	DeSoto	SR-302	SR 302 from I-55 to the Marshall CL - Intersection Improvements	HSIP			\$187,207.00	
09/21/15	106779/211061	DeSoto	SR-302	SR 302 from I-55 to the Marshall CL - Intersection Improvements	HSIP			\$141,996.00	
09/21/15	106779/211061	DeSoto	SR-302	SR 302 from I-55 to the Marshall CL - Intersection Improvements	HSIP			\$77,782.00	
09/21/15	106779/211061	DeSoto	SR-302	SR 302 from I-55 to the Marshall CL - Intersection Improvements	HSIP			\$18,130.00	
09/23/15	106852/17041	DeSoto	SR-302	SR 302, US 78, I-55 and US 51 - ITS	CMAQ			\$2,677,643.00	
09/23/15	106852/17041	DeSoto	SR-302	SR 302, US 78, I-55 and US 51 - ITS	CMAQ			\$4,831,374.00	
09/23/15	106852/17041	DeSoto	SR-302	SR 302, US 78, I-55 and US 51 - ITS	CMAQ			\$1,266,983.00	
09/24/15	106779/211061	DeSoto	SR-302	SR 302 from I-55 to the Marshall CL - Intersection Improvements	HSIP			\$67,500.00	
09/24/15	106779/211061	DeSoto	SR-302	SR 302 from I-55 to the Marshall CL - Intersection Improvements	HSIP			\$530,000.00	
09/24/15	106779/211061	DeSoto	SR-302	SR 302 from I-55 to the Marshall CL - Intersection Improvements	HSIP			\$0.00	
09/24/15	107080LPA/7889001	DeSoto		City of Hernando - Signal Project Nesbit and Hwy 51 and W Robinson Street and Hwy 51	STP	MS-LSTP-2014-05		\$115,243.00	
TOTAL:								14,857,011.00	

BIKE/PED AND OTHER ENHANCEMENT ACTIVITIES - TENNESSEE

11/21/14	STP-M/TAP-9420(5)	Shelby		Wolf River Blvd Extension, From Kimbrough Rd to Farmington Blvd in Germantown	TAP	TAP-2014-01		\$271,305.00	\$2,890,761.00
12/02/14	STP-M-9409(190)	Shelby		Benjestown Pedestrian Bridge over Loosahatchie River	STP-M	STP-M-2009-04		\$45,000.00	\$6,967,648.00
12/05/14	DEM-R-9409(187)	Shelby		University of Memphis R/R Pedestrian Improvement Project	DEMO	1499050		\$670,145.00	\$2,158,774.00
12/11/14	TIGER-M2M(1)	Shelby		Main St to Main St Multi-modal Connector Project (Harahan Bridge)	CMAQ	TIGER IV-2012-01		\$1,657,000.00	\$5,091,637.00
12/30/14	STP-M-9409(190)	Shelby		Benjestown Pedestrian Bridge over Loosahatchie River	STP-M	STP-M-2009-04		\$78,750.00	\$6,967,648.00
12/30/14	STP-EN-9409(161)	Shelby	SR-3	(Elvis Presley Blvd), Intersection at Brooks Rd in Memphis (Roadscapes)	ENH	ENH-2012-01		\$77,996.00	\$149,235.00
01/12/15	STP-EN-9409(165)	Shelby		Walker Ave, From South Highland St to Brister St in Memphis (Phase 1)	ENH	ENH-2012-03		\$493,601.00	\$661,795.00
01/23/15	STP-EN-9409(110)	Shelby		I-40/Riverside Drive Gateway Enhancements (Roadscapes)	ENH	ENH-2008-01		\$1,000.00	\$107,000.00
01/28/15	IM-55-1(130)	Shelby	I-55	Welcome Center Building	IM	TN-IM-2010-01		\$1,826,100.00	\$3,750,000.00
02/18/15	CM-9409(162)	Shelby		Shelby Farms Greenline, From Farm Rd to the Old Cordova Train Station	CMAQ-M	CMAQ-2012-02		\$825,000.00	\$1,100,000.00
03/13/15	TAP-M-9409(178)	Shelby		Mississippi Blvd, Intersections at South Pkwy, McLemore Ave and Walker Ave in Memphis	TAP	TAP-2014-01		(\$3,120.00)	\$2,890,761.00
03/17/15	TAP-M-9409(175)	Shelby		Dunbar Elementary School in Memphis	TAP	TAP-2014-01		(\$2,400.00)	\$2,890,761.00
03/17/15	TAP-M-9409(176)	Shelby		Benjamin L. Hooks Central Library in Memphis	TAP	TAP-2014-01		(\$1,800.00)	\$2,890,761.00
03/17/15	TAP-M-9409(177)	Shelby		Bail Rd, From Perry Rd to Airways Blvd in Memphis	TAP	TAP-2014-01		(\$6,000.00)	\$2,890,761.00
03/17/15	TAP-M-9409(179)	Shelby		Range Line Rd, From St. Elmo Ave to Durham Dr in Memphis	TAP	TAP-2014-01		(\$4,200.00)	\$2,890,761.00
03/17/15	TAP-M-9409(174)	Shelby		Hanley Elementary School in Memphis	TAP	TAP-2014-01		(\$2,880.00)	\$2,890,761.00
03/20/15	TAP-7900(52)	Shelby		Memphis-Arlington Rd, From W of I-269 to Jetway Dr in Arlington - Phase 2-A & B	TAP-S	ENH-2013-01		\$680,562.00	\$971,864.00
03/31/15	STP-M-9409(185)	Shelby		Chelsea Ave Greenline, From Washington Park to North Evergreen St in Memphis	STP-M	STP-M-2009-04		(\$178,560.00)	\$6,967,648.00
06/02/15	STP-M-9409(193)	Shelby		South Memphis Greenline	STP-M	STP-M-2009-04		\$28,800.00	\$6,967,648.00
06/23/15	TAP-M-9409(176)	Shelby	SR-57	(Poplar Ave) near Benjamin L. Hooks Central Library in Memphis	TAP	TAP-2014-01		\$9,000.00	\$2,890,761.00
07/01/15	STP-M-9409(168)	Shelby		Various Locations in Memphis (Sidewalks Program)	STP-M	STP-M-2009-04		\$160,000.00	\$6,967,648.00
08/03/15	STP-M-2855(10)	Shelby		Jefferson Ave, From SR-1 to North Cleveland St in Memphis	STP-M	STP-M-2009-04		\$57,600.00	\$6,967,648.00
09/18/15	STP-EN-9409(104)	Shelby		University of Memphis Railroad Pedestrian Improvement Project	ENH	ENH-2012-02		\$1,192,910.00	\$1,491,138.00
TOTAL:								7,875,809.00	

TRANSIT

03/09/15	TN-34-0001-01	Shelby		Three 40' Diesel Buses, Bus Facility Improvements	Section 5307			\$1,086,669.00	
04/03/15	TN-90-X385	Shelby		Preventive Maintenance	Section 5307			\$7,260,000.00	
08/20/15	TN-90-X385-01	Shelby		Preventive Maintenance	Section 5307			\$1,820,000.00	
08/20/15	TN-54-0004-01	Shelby		Preventive Maintenance	Section 5337			\$875,157.00	
09/03/15	TN-16-X012	Shelby		Up to 25 Vehicles, Curb Ramps and Project Administration	Section 5310			\$706,360.00	
TOTAL:								11,748,186.00	

FUNDING SOURCES

This section provides the reader with a short description of the different funding sources referenced in the FY 2015 list of federally obligated projects.

FEDERAL HIGHWAY ADMINISTRATION (FHWA) FUNDS:

Bridge Replacement and Rehabilitation (BRR):

This funding program can be used for bridge replacement and repair on bridges determined to be structurally deficient, functionally obsolete, or in need of systematic preventative maintenance.

Congestion Mitigation & Air Quality (CMAQ):

This funding program directs funds to projects and programs which reduce transportation emissions in air quality non-attainment or maintenance areas as determined by the Environmental Protection Agency. These funds are allocated to the state and to the local jurisdictions. Certain CMAQ projects are eligible for funding with 100 percent Federal funds. They include traffic control signalization projects, commuter carpooling and vanpooling activities or installation of traffic signs, traffic lights or priority control systems for emergency vehicles or transit vehicles at signalized intersections. State and local matches are required if CMAQ funds are used for mass transit projects or other air quality activities.

Demonstration Set Aside of STP Funds (DEMO):

This program provides special funding for certain projects. It is set aside funds, which are 100% federal or 80% federal and 20% state or local.

Highway Safety Improvement Program (HSIP):

This funding program directs funds to projects and programs which achieve a significant reduction in traffic fatalities and serious injuries on all public roads, including non-state-owned public roads and roads on tribal lands. The Highway Safety Improvement Program (HSIP) requires a data-driven, strategic approach to improving safety on all public roads that focuses on performance. Some examples of eligible uses of funds include intersection safety improvements, pavement and shoulder widening, pedestrian and bicycle safety improvements, and construction of traffic calming features.

Interstate Maintenance (IM):

The Interstate Maintenance (IM) program provides funding for resurfacing, restoring, rehabilitating and reconstructing (4R) most routes on the Interstate System. IM funds are a carry-over funding source from previous transportation bills.

National Highway Performance Program (NHPP):

The National Highway Performance Program (NHPP) provides support for the condition and performance of the National Highway System (NHS), for the construction of new facilities on the NHS, and to ensure that investments of Federal-aid funds in highway construction are directed to support progress

V. APPENDIX A - EXPLANATION OF FUNDING SOURCES

toward the achievement of performance targets established in as State's asset management plan for the NHS. NHPP funds are a current federal funding source under MAP-21.

National Highway System (NHS):

The National Highway System (NHS) includes the Interstate Highway System as well as other roads important to the nation's economy, defense, and mobility. The NHS was developed by the Department of Transportation (DOT) in cooperation with the states, local officials, and metropolitan planning organizations (MPOs). NHS funds are a carry-over funding source from previous transportation bills.

Surface Transportation Program (STP):

This flexible funding source may be used by States and localities for projects to preserves and improve the conditions and performance on any Federal-aid highway, bridge, and tunnel projects on any public road, pedestrian and bicycle infrastructure, and transit capital projects, including intercity bus terminals. STP funds may be used to improve the design or operation of any road which is which is designated as an urban collector or higher on the State Functional Classification System. STP-S refers to projects programmed by one of the state agencies using the state's allocation of STP funds. STP-L refers to projects utilizing STP funds that are designated specifically for the local area. Any jurisdiction receiving STP funds must provide a match of at least 20 percent of the total project cost (exception: signalization projects are subject to 100% federal funds).

Transportation Alternatives Program (TAP):

MAP-21 establishes a new program to provide for a variety of alternative transportation projects, including many that were previously eligible activities under separately funded programs. The TAP replaces the funding from pre-MAP-21 programs including Transportation Enhancements, Recreational Trails, Safe Routes to School, and several other discretionary programs, wrapping them into a single funding source.

FEDERAL TRANSIT AUTHORITY (FTA) FUNDS:

Section 5307 Urbanized Area Formula Program:

These funds can be used for the following: 1) planning, engineering design and evaluation of transit projects and other technical transportation-related studies; 2) capital investments in bus and bus-related activities such as replacement of buses, overhaul of buses, rebuilding of buses, crime prevention and security equipment and construction of maintenance and passenger facilities; and 3) capital investments in new and existing fixed guideway systems including rolling stock, overhaul and rebuilding of vehicles, track, signals, communications, and computer hardware and software. These funds require a 20% match which are typically divided between state and local government, with each contributing 10%.

Section 5310 Enhanced Mobility for Seniors and Individuals

These funds are directed to improve mobility for seniors and individuals with disabilities by removing barriers to transportation service and expanding transportation mobility options. These funds require a local match of 20% for capital expenses and 50% for operating expenses, which are typically divided

V. APPENDIX A - EXPLANATION OF FUNDING SOURCES

between state and local government.

Section 5337 State of Good Repair Program:

These funds are directed to rail facilities and include preventative maintenance and improvements. . These funds require a 20% match which are typically divided between state and local government, with each contributing 10%.

OTHER FUNDING SOURCES:

Transportation Enhancement Grant (ENH):

Specific activities which can be funded with Transportation Enhancement (ENH) funds; activities include pedestrian/bicycle facilities, acquisition of scenic easements and scenic historic sites, scenic or historic highway programs, scenic beautification, historic preservation, rehabilitation/operation of historic transportation structures, railway corridor preservation, control/removal of outdoor advertising, archeological planning/research and mitigation of highway runoff water pollution. ENH funds are a carry-over funding source from previous transportation bills.

High Priority Project (HPP):

Projects using these funds were earmarked by the U.S. Congress as high priorities, at the federal level during the Congressional appropriations and re-authorization process. HPP funds are a carry-over funding source from previous transportation bills.

Safe Routes to Schools (SRTS):

This program seeks to enable and encourage children in kindergarten through eighth grades (K-8) to walk or bicycle to school, thereby promoting increased physical activity. The SRTS program is multi-faceted and requires that applicants address non-infrastructure activities before, during, and after infrastructure improvements have been made. Infrastructure projects include "traditional" items such as sidewalks, signs, signals, crossing improvements, etc. Non-infrastructure activities include education, encouragement, enforcement, and evaluation. SRTS funds are a carry-over funding source from previous transportation bills.

Transportation, Community, and System Preservation Program (TCSP):

This program is intended to address the relationships among transportation, community, and system preservation plans and practices and identify private sector-based initiatives to improve those relationships. TCSP are a carry-over funding program from previous transportation bills.