

Memphis Urban Area  
Metropolitan Planning Organization (MPO)

---

# Federal Certification Review Public Input Meeting

---

May 19, 2015  
Federal Highway Administration (FHWA)  
Federal Transit Administration (FTA)

# Before We Start

- **FHWA** Federal Highway Administration
- **FTA** Federal Transit Administration
- **EPA** Environmental Protection Agency
- **RTP** Regional Transportation Plan (20+ years)
- **TIP** Transportation Improvement Program (4 years)
- **UPWP** Unified Planning Work Program (2 years)
- **PE-D** Preliminary Engineering for Design (engineering design of the road)
- **PE-N** Preliminary Engineering for environmental impact review
- **ROW** Right of Way Acquisition
- **CONST** Construction of project
- **STP** Surface Transportation Program
- **TDOT** Tennessee Department of Transportation
- **MDOT** Mississippi Department of Transportation

# What is Transportation?

Roads, bridges, bike lanes, buses, sidewalks, traffic signals, facility maintenance, freight\*, etc.

## Planning

### MPO &

### All its members

20 year future planning

Regional outlook

Federal funding allocation for project implementation

## Implementation

### Jurisdiction

Local roads construction and maintenance

Bike lanes

Traffic Signal

Buses

Sidewalks

### State DOT's

Interstate and State Highway

Bridges on interstate and state highways

Bike lanes (rural roads)

Large traffic information projects

**\*Note:** freight facilities are generally privately managed and operated, but their impact on local roads and highways requires investments from state and local jurisdictions



# What is an MPO?

- The MPO is a **federally mandated** transportation policy-making and planning body for areas with urbanized area population of 50,000 or more
- The MPO allocates transportation funding resources appropriately.
- Federal Law **requires** a **regional outlook for transportation planning**. Hence, Planning needs to reflect the **region's shared vision** for its future.
- The MPO ensures federal spending on transportation occurs through a ***comprehensive, cooperative and continuing*** (3-C) process.

# MPO Roles & Responsibilities

## The MPO *DOES NOT*:

- Construct roads or other transportation improvements
- Perform road-related work (PE, ROW or CONST)
- Operate transit systems or airports
- **Dictate what projects are pursued by jurisdictions**
- Approve land use decisions, zoning etc.

## The MPO *DOES*:

- Plan for the overall transportation network, i.e. roads, bike/ped, transit and freight
- Work with MPO members to allocate transportation funds equitably and appropriately
- Inform the public about MPO planning activities, studies, etc.

# Memphis MPO Planning Area

## Shelby County, TN

- Entire county

## DeSoto County, MS

- Entire county

## Fayette County, TN

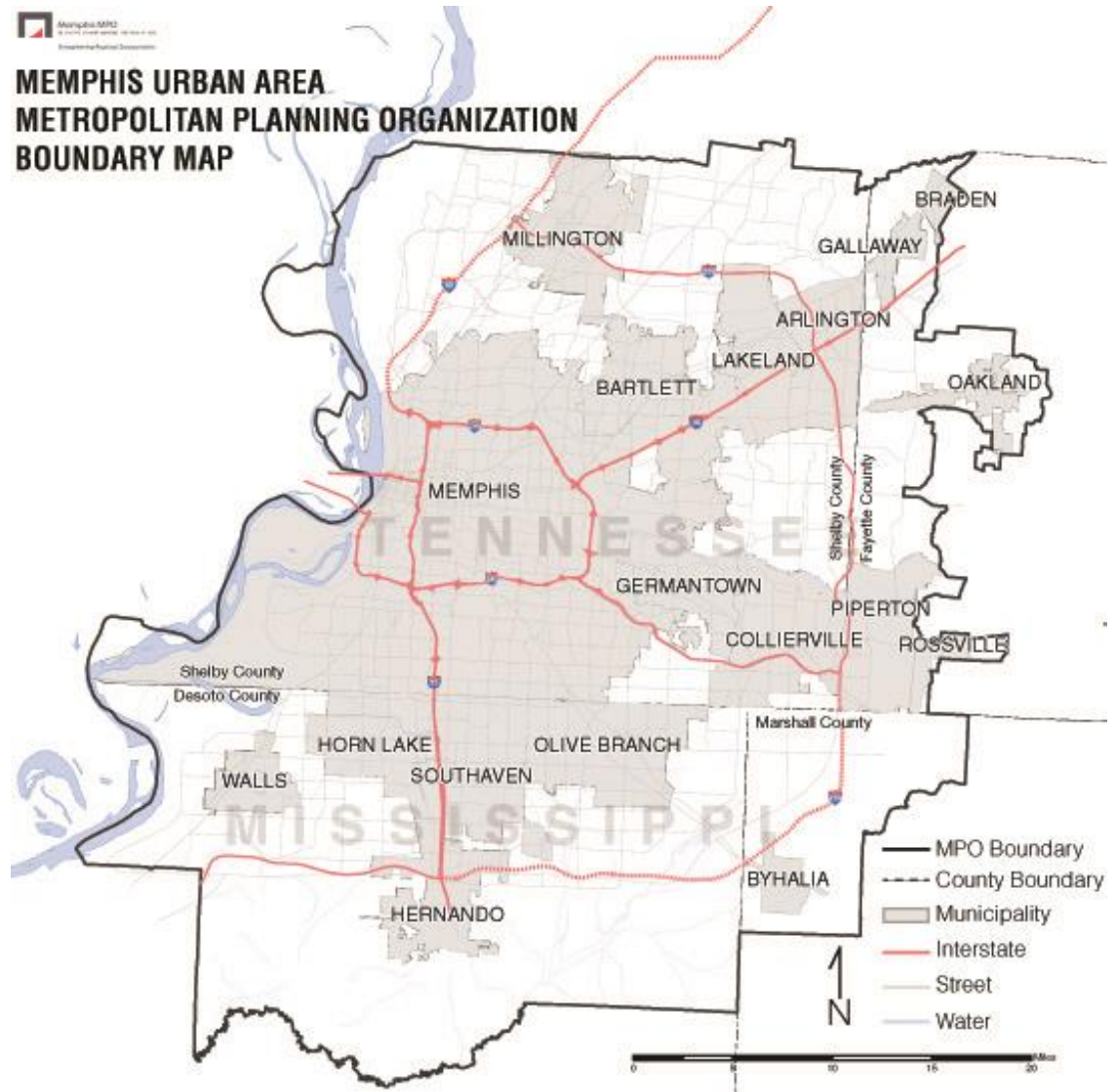
- Western portion

## Marshall County, MS

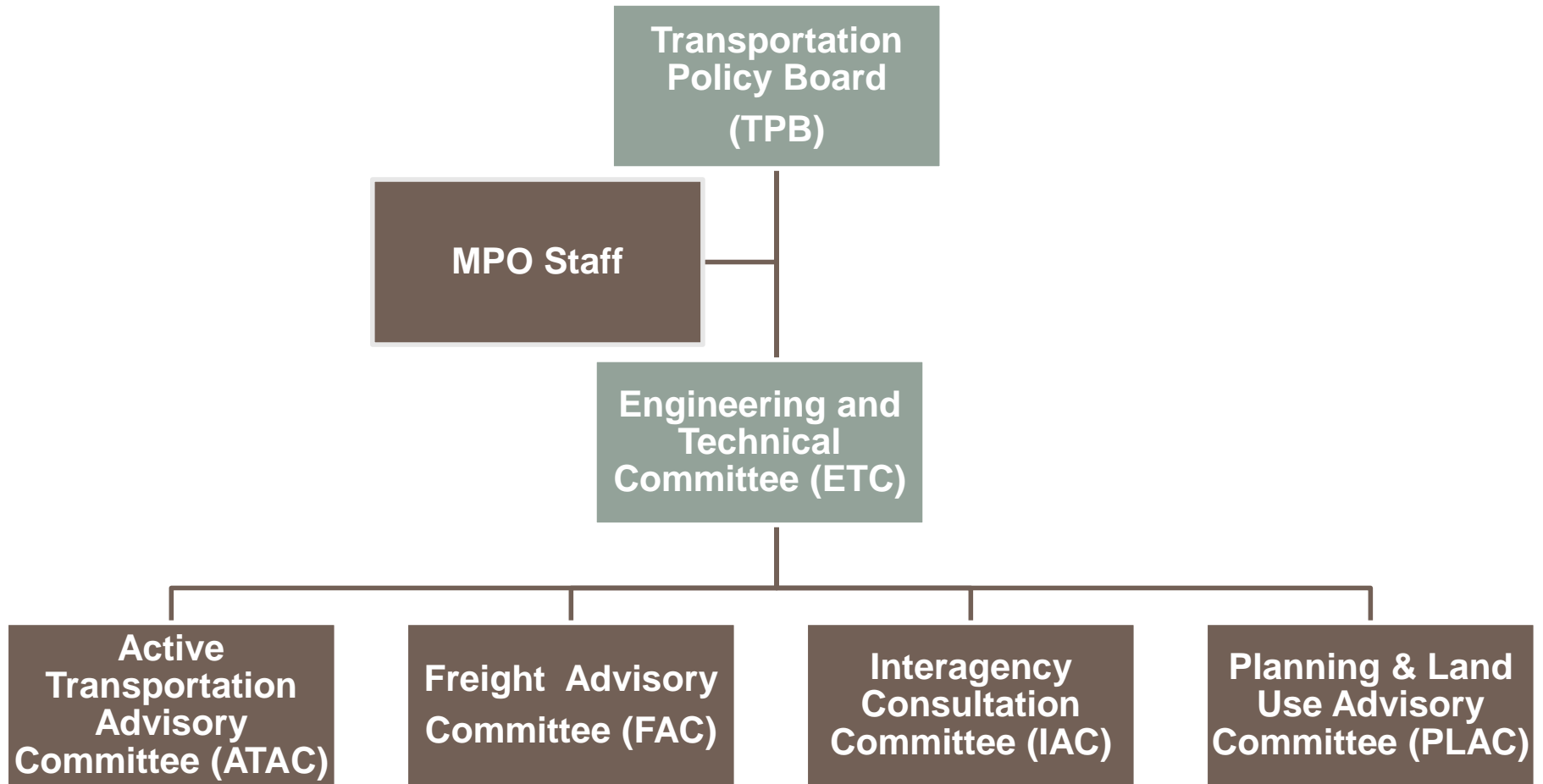
- Northwestern portion

\*The MPO planning area covers the area that is currently urbanized and what is likely to become urbanized in the next 20 years.

Coordination with West Memphis MPO, AR



# Memphis MPO Structure



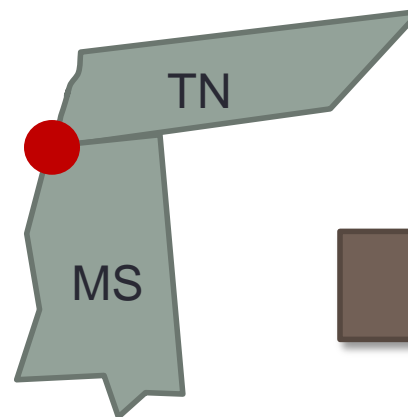
# How does the area receive funds?



Memphis MPO  
METROPOLITAN PLANNING ORGANIZATION  
*Strengthening Regional Transportation*

State  
DOTs

MATA





# Major MPO Plans

MPO Product	Time Horizon	Contents	Update Requirements
<b>RTP</b>	20 years (minimum) 25 years (preferred)	Future goals, strategies, and projects	Every 4 years
<b>TIP</b>	4 years	Transportation investments and projects	Every 4 years
<b>UPWP</b>	2 years	Planning studies, tasks, and budget	Annual

## Other MPO Plans

1. **Public Participation Plan**
2. **Bicycle & Pedestrian Plan**
3. **Congestion Management Process (CMP)**
4. **Intelligent Transportation Systems (ITS) Architecture**
5. **Travel Demand Model and Air Quality Model**
6. **Coordinated Human Services Transportation Plan (CHSTP- Transit Plan)**

# MPO Planning

Regional Transportation Plan (RTP)– 20 Years

Automobile, Transit, Bicycle, Pedestrian, Freight, Rail, Airport, Port



Project	Project	Project	Project	Project	Project	Project	Project
Project	Project	Project	Project	Project	Project	Project	Project
Project	Project	Project	Project	Project	Project	Project	Project

Transportation Improvement Program (TIP)  
Every 4 Years

# MPO Studies & Plans

## ***Completed***

- Direction 2040 Long Range Transportation Plan
- MPO Boundary Expansion Study
- FY 2014-17 Transportation Improvement Program (TIP)
- I-269 Corridor Study (TN)
- Imagine 2040: Transportation & Land Use Plan
- Mid-South Regional Travel Survey
- 2014 Bicycle & Pedestrian Plan Update
- 2014 ITS Architecture Update
- 2014 Public Participation Plan

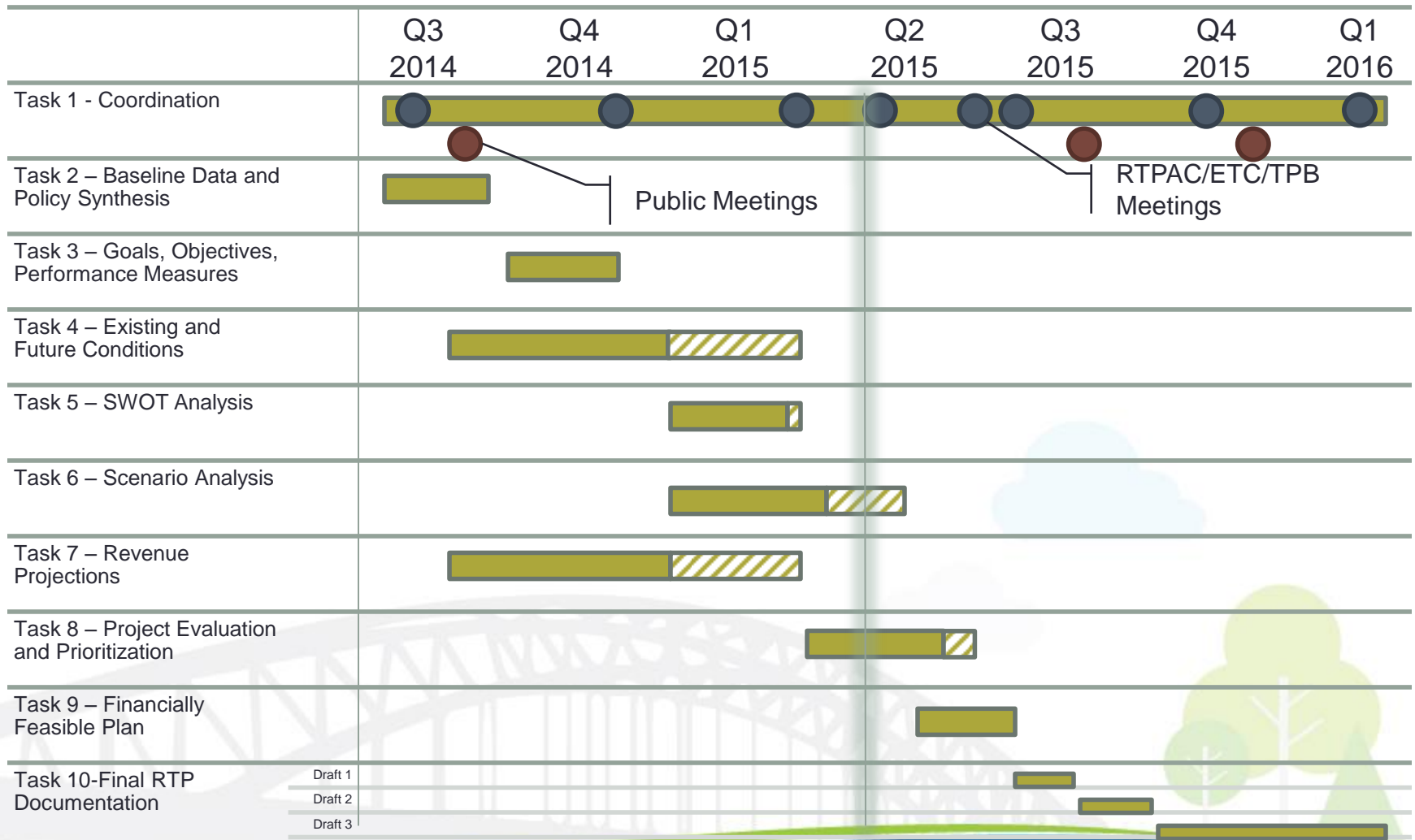
## ***Underway***

- LIVABILITY 2040 Regional Transportation Plan
- Congestion Management Process
- Travel Demand Model Update
- Coordinated Human Service Transit Plan (CHSTP)

## ***Upcoming***

- Bus Stop Study
- FY 2017-2020 Transportation Improvement Program (TIP)

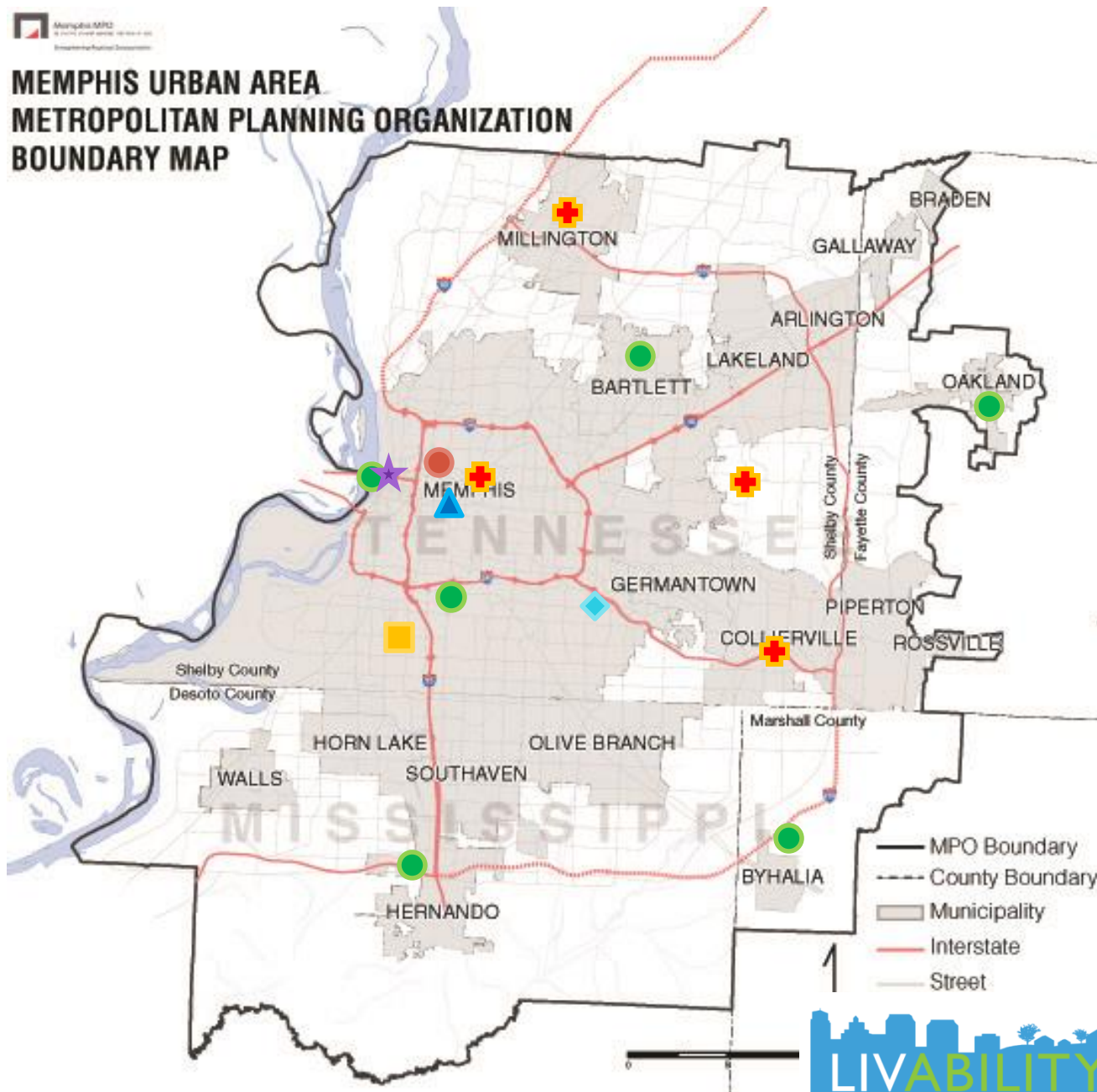
# Livability 2040 Project Schedule



# RTP Public Outreach Round

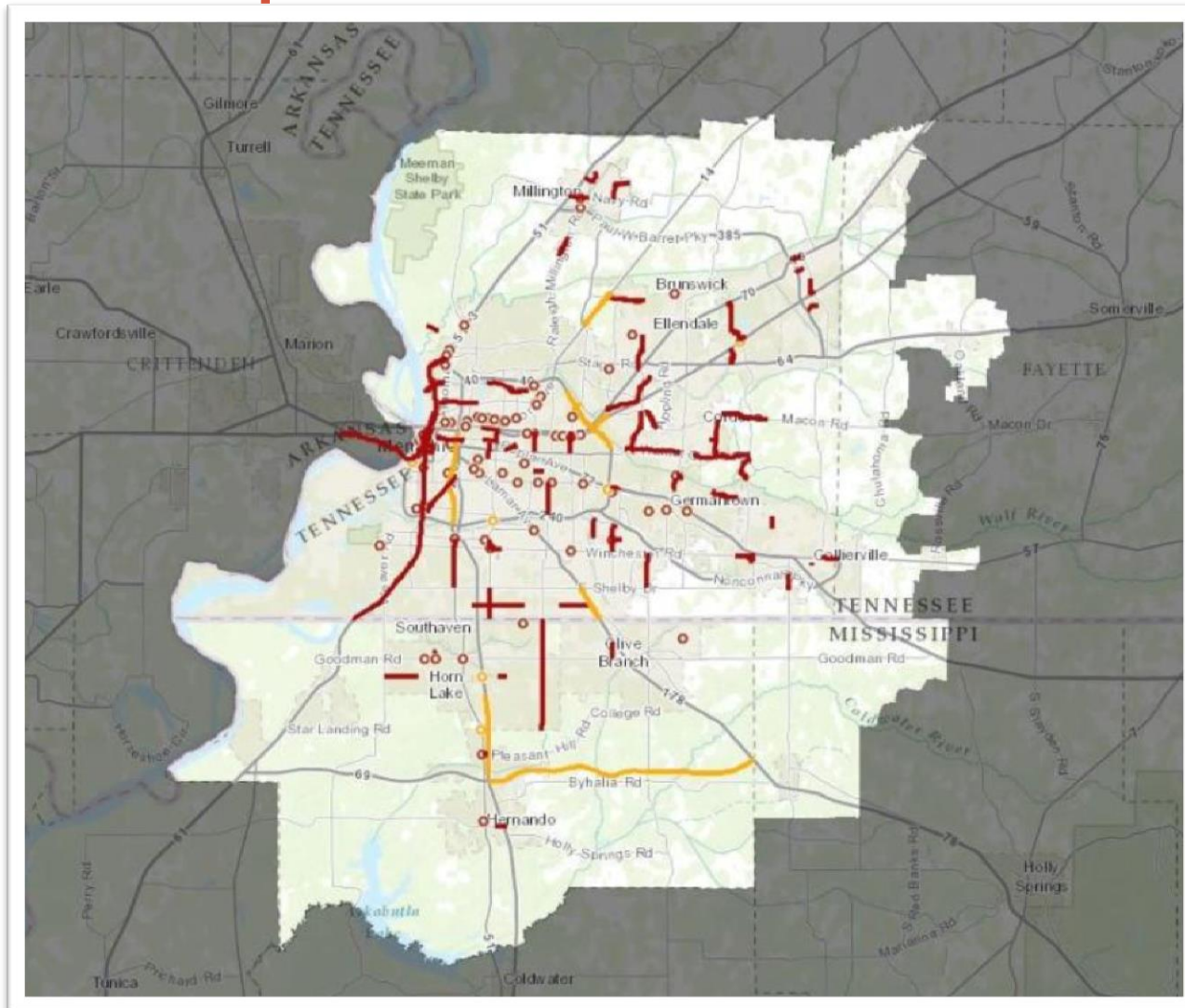


## MEMPHIS URBAN AREA METROPOLITAN PLANNING ORGANIZATION BOUNDARY MAP



- First Round**
- Public Meetings
- Community and Tag On Meetings
- ▲ Livable Memphis
- ★ MEMfix Event
- Westwood Community
- Center for Independent Living
- ◆ Latino Memphis
- Second Round**
- ✚ Upcoming Meetings

# Online map- MPO website new feature



# What will happen to your comments?

- Comments received will be summarized in a written report.
- Comments are considered by FHWA & FTA while evaluating the transportation process for the Memphis MPO planning area.

If you would like to submit comments.

Federal Highway Administration – TN Division

Corbin Davis

404 BNA Drive

Building 200, Suite 508

Nashville, TN 37217

Fax: 615-781-5773

[Corbin.Davis@dot.gov](mailto:Corbin.Davis@dot.gov)